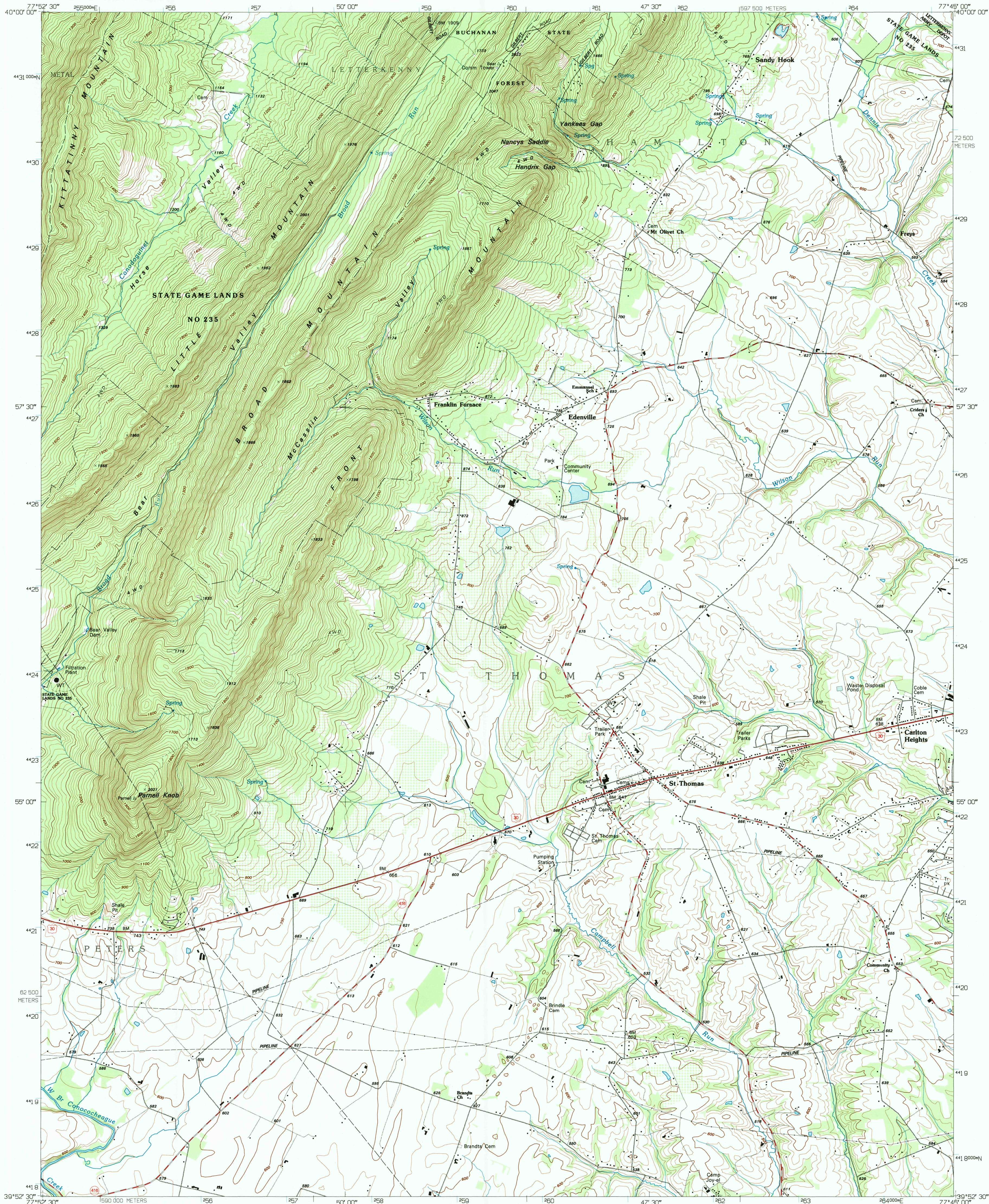
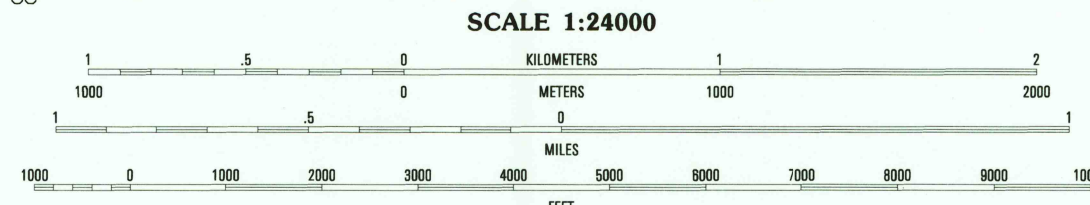
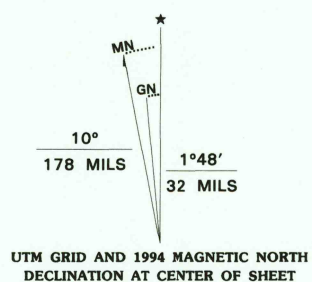


UNITED STATES
DEPARTMENT OF THE INTERIOR
GEOLOGICAL SURVEY

ST. THOMAS QUADRANGLE
PENNSYLVANIA-FRANKLIN CO.
7.5 MINUTE SERIES (TOPOGRAPHIC)

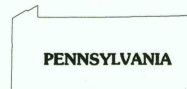


Produced by the United States Geological Survey
Compiled from imagery date 1988-1989 and other sources
Field checked 1990. Map edited 1994
North American Datum of 1983 (NAD 83). Projection and
blue 1000-meter ticks: Universal Transverse Mercator, zone 18
2 500-meter ticks: Pennsylvania Coordinate System of 1983, south zone
North American Datum of 1927 (NAD 27) is shown by dashed
corner ticks. The values of the shift between NAD 83 and NAD 27
for 7.5-minute intersections are obtainable from National Geodetic
Survey NADCON software
There may be private inholdings within the boundaries of
the National or State reservations shown on this map



CONTOUR INTERVAL 20 FEET
NATIONAL GEODETIC VERTICAL DATUM OF 1929

THIS MAP COMPLIES WITH NATIONAL MAP ACCURACY STANDARDS
FOR SALE BY U.S. GEOLOGICAL SURVEY
DENVER, COLORADO 80225, OR RESTON, VIRGINIA 22092
A FOLDER DESCRIBING TOPOGRAPHIC MAPS AND SYMBOLS IS AVAILABLE ON REQUEST



QUADRANGLE LOCATION

1	2	3	1	Burnt Cabins
2	3	4	2	Fannetsburg
3	4	5	3	Rochbury
4	5	6	4	McConnellsburg
5	6	7	5	Chambersburg
6	7	8	6	Mercersburg
7	8		7	Williamson
			8	Greencastle

ADJOINING 7.5' QUADRANGLE NAMES

ROAD CLASSIFICATION

Primary highway
hard surface
Secondary highway
hard surface
Light-duty road, hard or
improved surface
Unimproved road

Interstate Route U.S. Route State Route

ST. THOMAS, PA
39077-H7-TF-024

1990

DMA 5463 IV NE - SERIES V831

