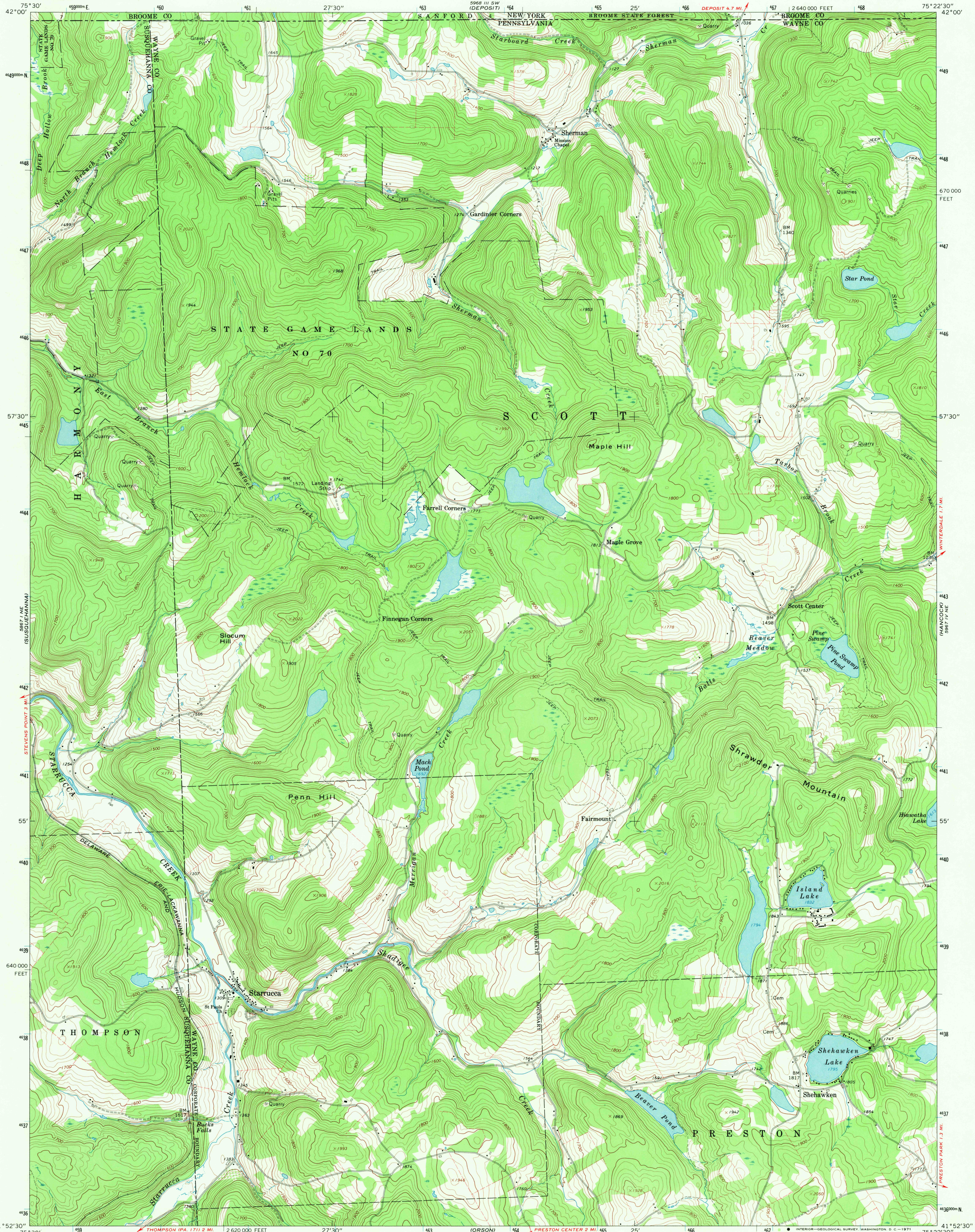


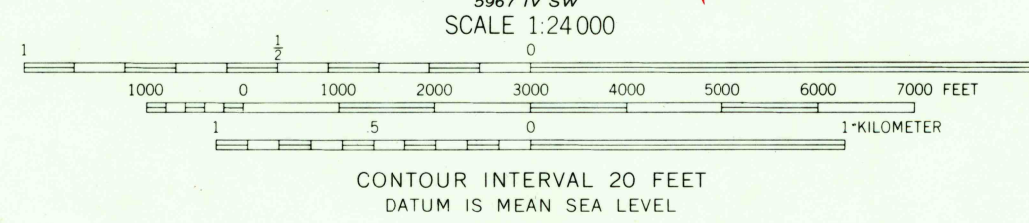
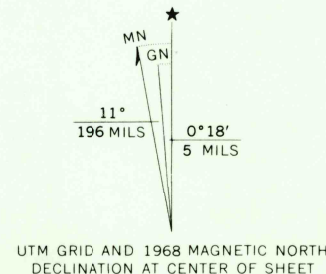
UNITED STATES  
DEPARTMENT OF THE INTERIOR  
GEOLOGICAL SURVEY

STARRUCCA QUADRANGLE  
PENNSYLVANIA—NEW YORK  
7.5 MINUTE SERIES (TOPOGRAPHIC)  
NW/4 STARRUCCA 15' QUADRANGLE

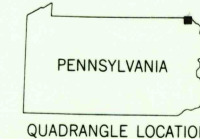
5968 11 SE  
(CANNONSVILLE  
RESERVOIR)



Mapped, edited, and published by the Geological Survey  
Control by USGS and USC&GS  
Topography by photogrammetric methods from aerial  
photographs taken 1966. Field checked 1968  
Polyconic projection. 1927 North American datum  
10,000-foot grid based on Pennsylvania coordinate system, north zone  
1000-meter Universal Transverse Mercator grid ticks,  
zone 18, shown in blue  
Fine red dashed lines indicate selected fence and field lines where  
generally visible on aerial photographs. This information is unchecked



USGS  
HISTORICAL FILE  
TOPOGRAPHIC DIVISION



ROAD CLASSIFICATION  
Light-duty road, all weather, Unimproved road, fair or dry  
improved surface weather

STARRUCCA, PA.—N. Y.  
NW/4 STARRUCCA 15' QUADRANGLE  
N4152.5—W7522.5/7.5

1968  
AMS 5967 IV NW—SERIES V831

THIS MAP COMPLIES WITH NATIONAL MAP ACCURACY STANDARDS  
FOR SALE BY U. S. GEOLOGICAL SURVEY, WASHINGTON, D. C. 20242  
A FOLDER DESCRIBING TOPOGRAPHIC MAPS AND SYMBOLS IS AVAILABLE ON REQUEST

U.S.G.S.  
FILE COPY  
TOPOGRAPHIC DIVISION

3725  
MAR 1 6 1971