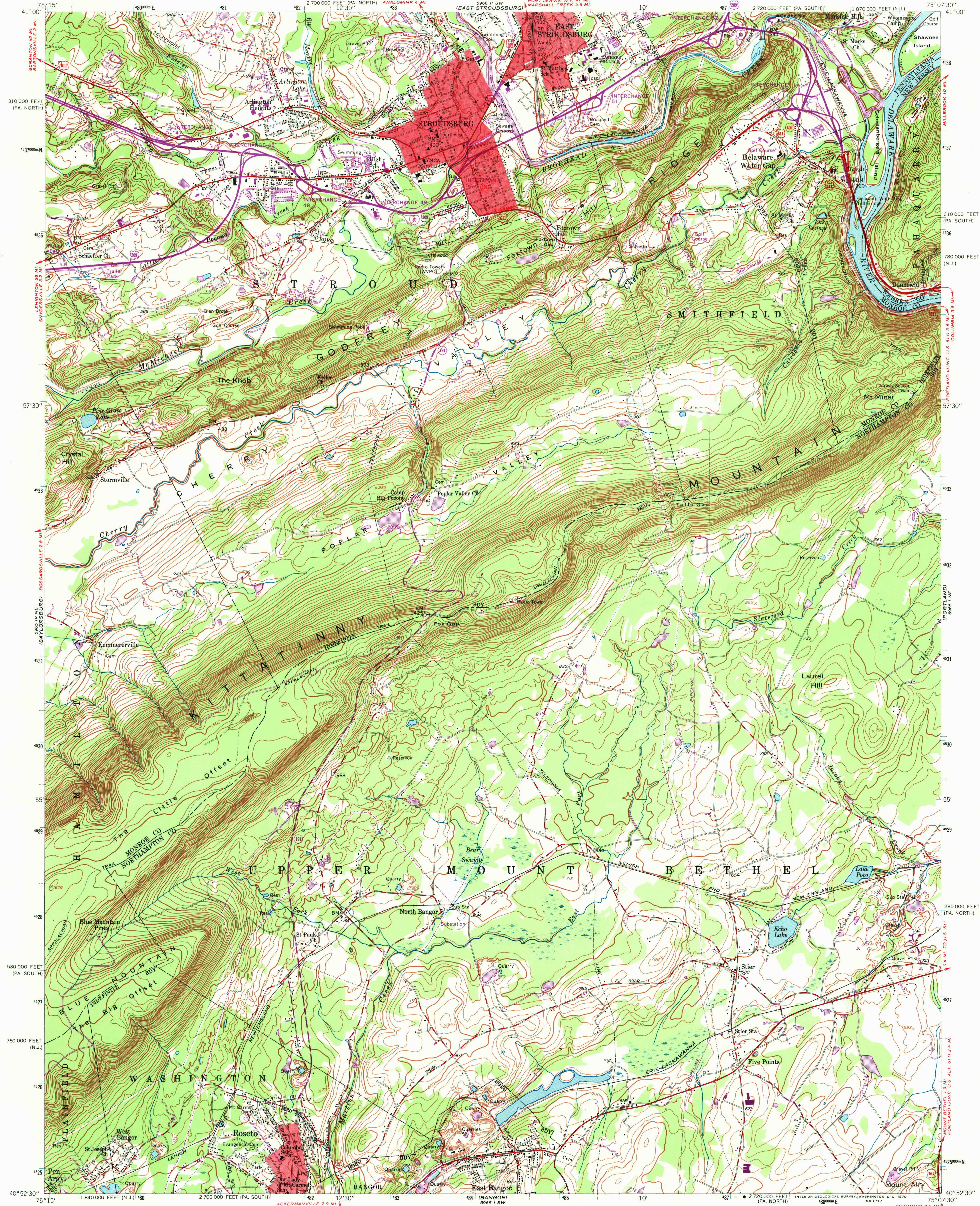
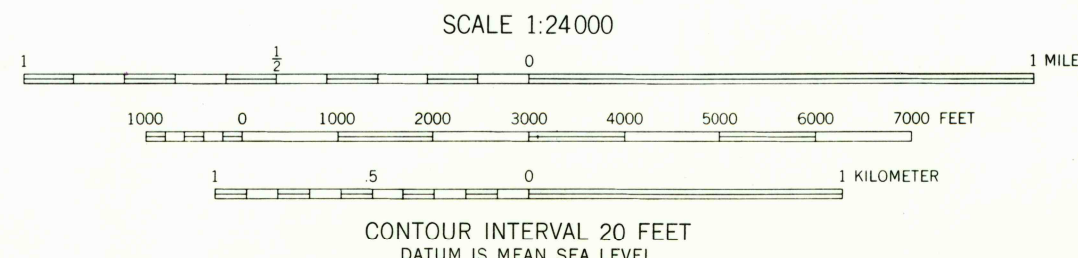
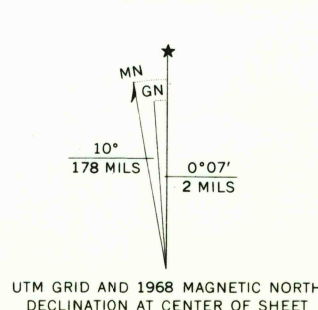


UNITED STATES
DEPARTMENT OF THE INTERIOR
GEOLOGICAL SURVEY

STROUDSBURG QUADRANGLE
PENNSYLVANIA-NEW JERSEY
7.5 MINUTE SERIES (TOPOGRAPHIC)
NW/4 DELAWARE-WATER GAP 15' QUADRANGLE



Maped by the Army Map Service
Edited and published by the Geological Survey
Control by USGS and USC&GS
Topography from aerial photographs by photogrammetric methods
Aerial photographs taken 1942. Culture revised by the
Geological Survey 1955
Polyconic projection. 1927 North American datum
10,000-foot grid based on Pennsylvania coordinate system,
south and north zones, and on New Jersey coordinate system
1000-meter Universal Transverse Mercator grid ticks,
zone 18, shown in blue
Red tint indicates areas in which only landmark buildings are shown
Revisions shown in purple compiled by Geological Survey in
cooperation with State of Pennsylvania agencies, from aerial
photographs taken 1968. This information not field checked



USGS
HISTORICAL FILE
TOPOGRAPHIC DIVISION
PENNSYLVANIA
QUADRANGLE LOCATION

ROAD CLASSIFICATION
Heavy-duty ——— Light-duty ———
Medium-duty ——— Unimproved dirt ———
Interstate Route U.S. Route State Route

STROUDSBURG, PA.—N. J.
NW/4 DELAWARE-WATER GAP 15' QUADRANGLE
N4052.5—W7507.5/7.5
1955
PHOTOREVISED 1968
AMS 5965 1 NW—SERIES V831

U.S.G.S.
FILE COPY
TOPOGRAPHIC DIVISION