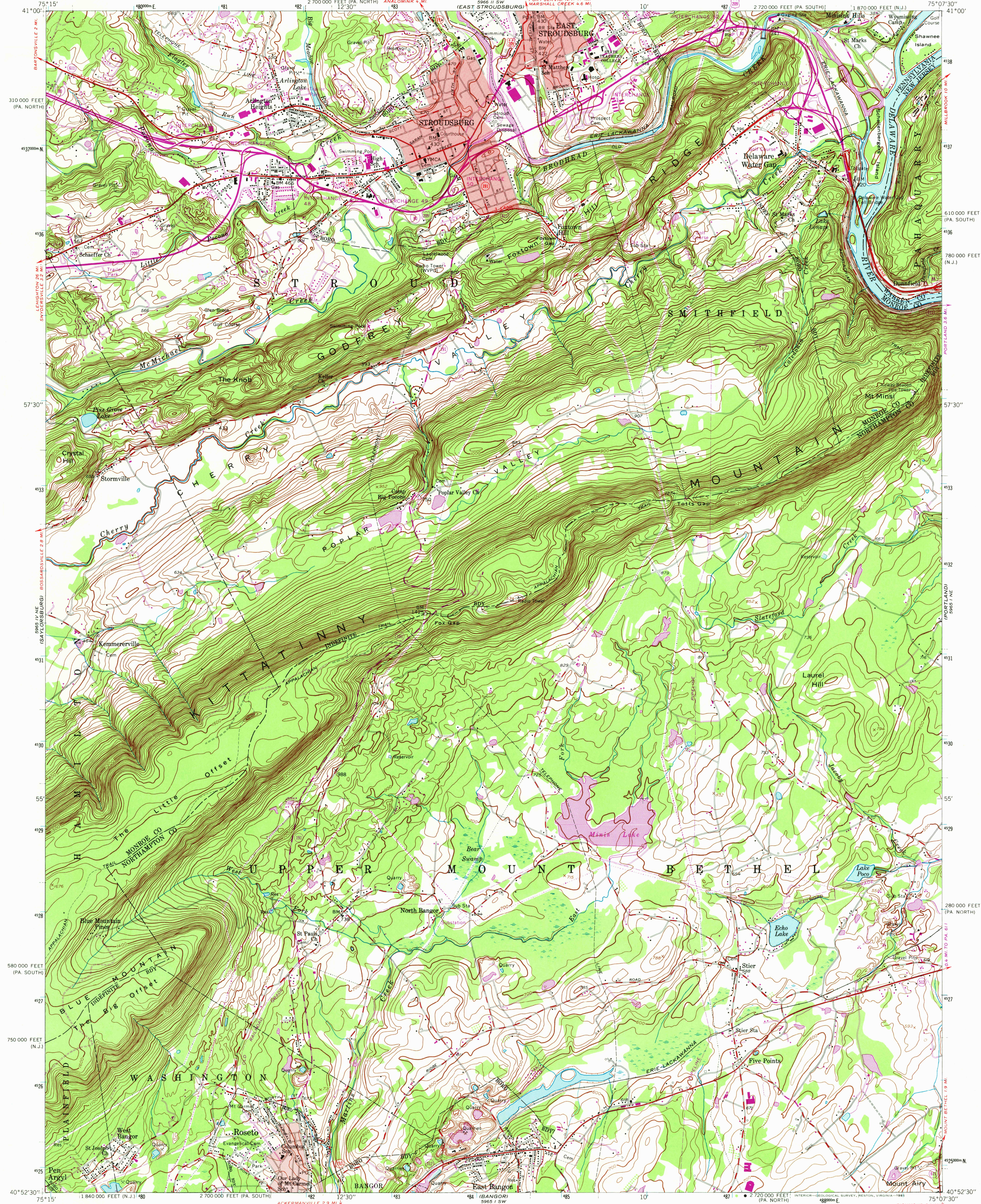


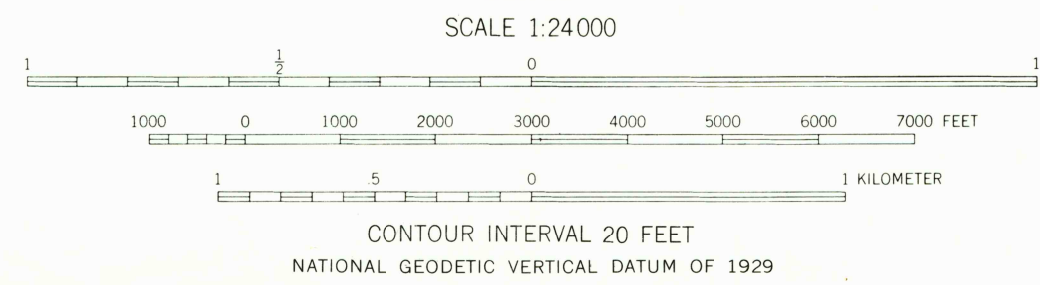
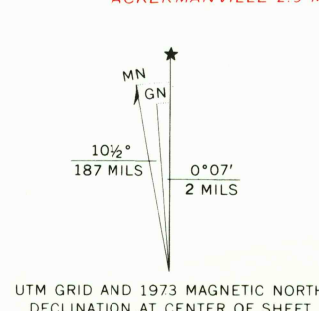
UNITED STATES
DEPARTMENT OF THE INTERIOR
GEOLOGICAL SURVEY

STROUDSBURG QUADRANGLE
PENNSYLVANIA-NEW JERSEY
7.5 MINUTE SERIES (TOPOGRAPHIC)



Mapped by the Army Map Service
Edited and published by the Geological Survey
Control by USGS and USC&GS

Topography by photogrammetric methods from aerial photographs taken 1942. Culture revised by the Geological Survey 1955
Polyconic projection. 10,000-foot grid ticks based on Pennsylvania coordinate system south and north zones and on New Jersey coordinate system. 1000-meter Universal Transverse Mercator grid ticks, zone 18 shown in blue. 1927 North American Datum. To place on the predicted North American Datum 1983 move projection lines 6 meters south and 32 meters west as shown by dashed corner ticks
Red tint indicates areas in which only landmark buildings are shown
Revisions shown in purple compiled by the Geological Survey in cooperation with State of Pennsylvania agencies from aerial photographs taken 1968 and 1973. This information not field checked



ROAD CLASSIFICATION

| | |
|------------------|-----------------|
| Heavy-duty | Light-duty |
| Medium-duty | Unimproved dirt |
| Interstate Route | U.S. Route |
| | State Route |

QUADRANGLE LOCATION

USGS HISTORICAL FILE NATIONAL MAPPING DIVISION

STROUDSBURG, PA.-N. J.

N4052 5--W7507 5/7.5

1955

PHOTOREVISED 1968 AND 1973

AMS 5965 1 NW-SERIES V831

JUL 21 1981
4900