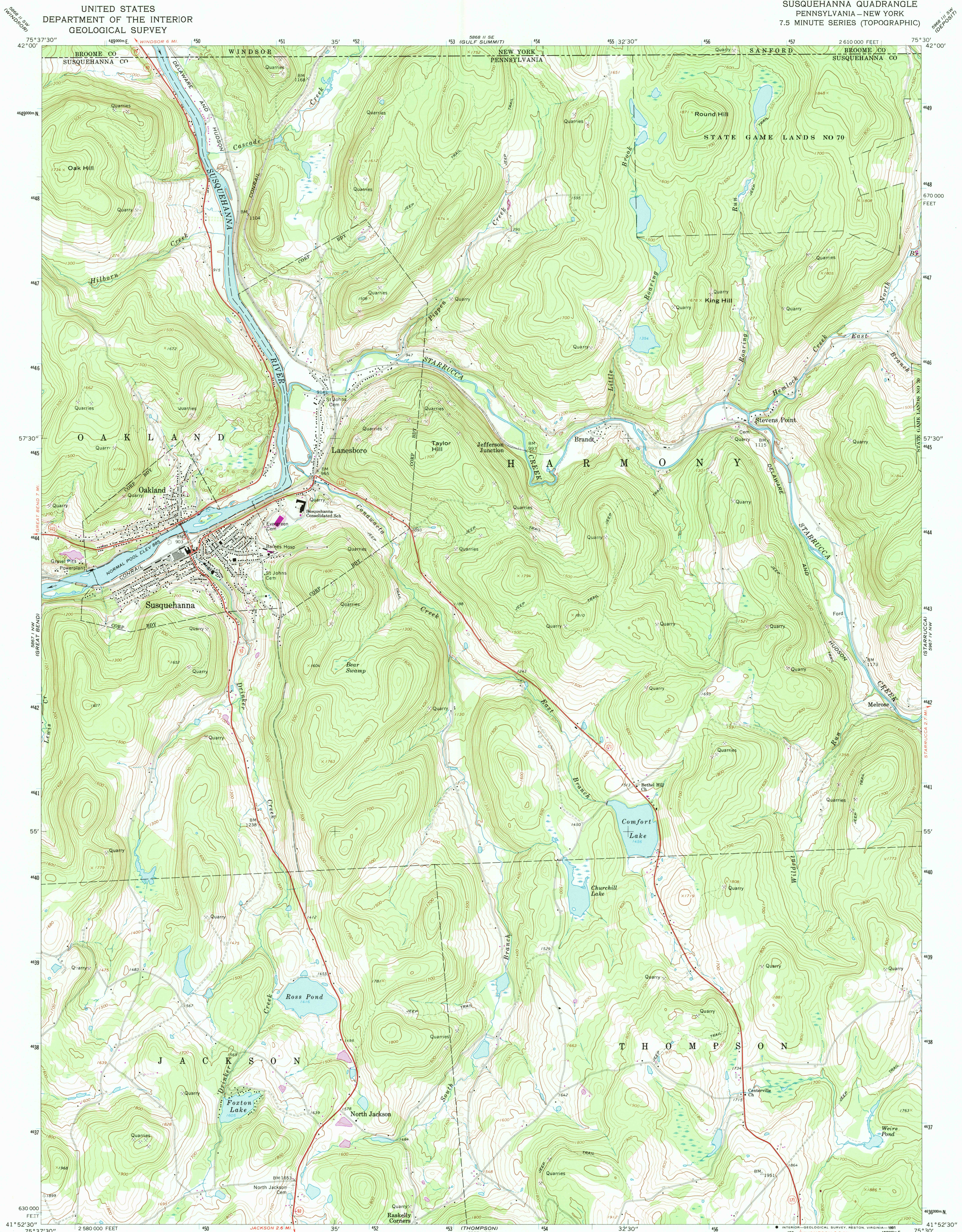
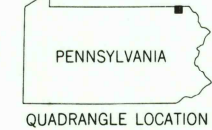
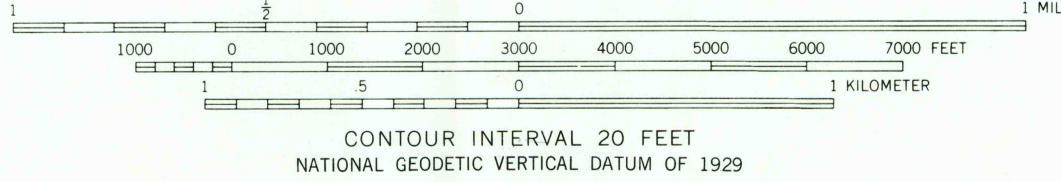
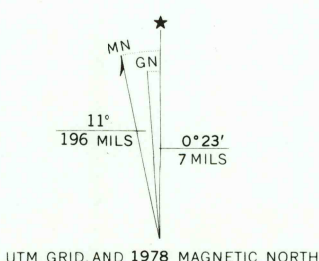


UNITED STATES
DEPARTMENT OF THE INTERIOR
GEOLOGICAL SURVEY

SUSQUEHANNA QUADRANGLE
PENNSYLVANIA—NEW YORK
7.5 MINUTE SERIES (TOPOGRAPHIC)



Mapped, edited, and published by the Geological Survey
Control by USGS and USC&GS
Topography by photogrammetric methods from aerial photographs taken 1966. Field checked 1968
Polyconic projection. 1927 North American datum
10,000-foot grid based on Pennsylvania coordinate system, north zone
1000-meter Universal Transverse Mercator grid ticks, zone 18, shown in blue
Fine red dashed lines indicate selected fence and field lines where generally visible on aerial photographs. This information is unchecked
Revisions shown in purple compiled in cooperation with the State of Pennsylvania agencies from aerial photographs taken 1976
This information not field checked. Map edited 1978
Map photoinspected 1980
No major culture or drainage changes observed



ROAD CLASSIFICATION
Primary highway, all weather, Light-duty road, all weather, improved surface
Unimproved road, fair or dry weather
State Route

SUSQUEHANNA, PA.—N. Y.
N4152.5—W7530/7.5
PHOTOINSPECTED 1980
1968
PHOTOREVISED 1978
AMS 5867 1 NE—SERIES V831

