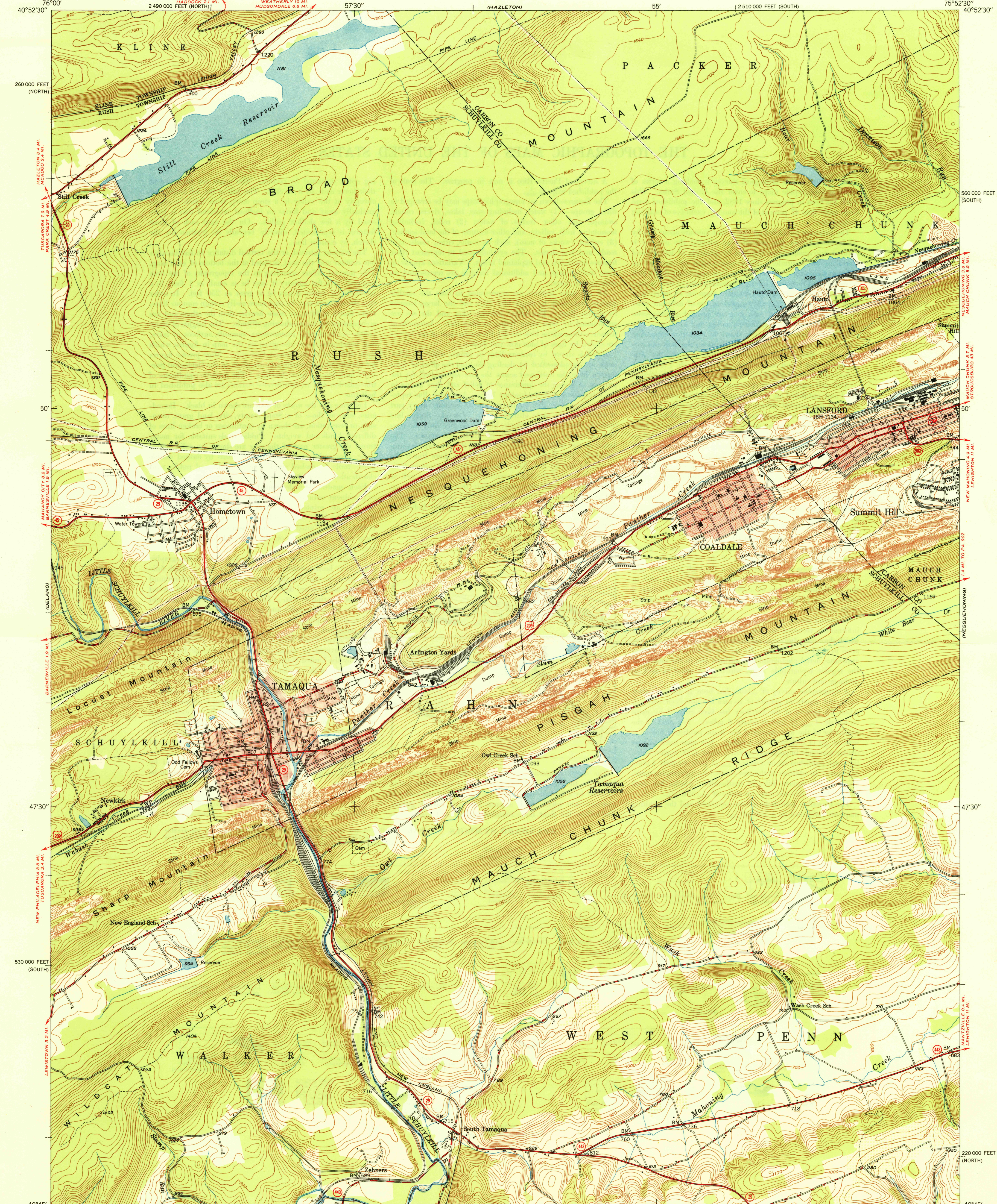


UNITED STATES  
DEPARTMENT OF THE INTERIOR  
GEOLOGICAL SURVEY

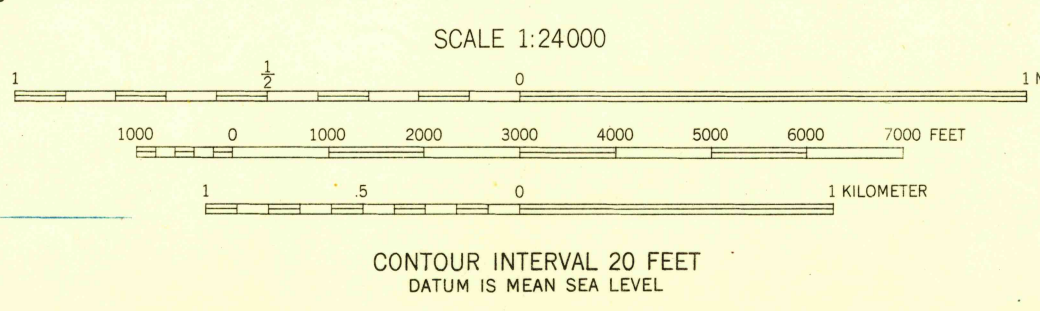
U. S. G. S.  
FILE COPY  
Inspection and Editing

TAMAQUA QUADRANGLE  
PENNSYLVANIA  
7.5 MINUTE SERIES (TOPOGRAPHIC)  
SW 1/4 HAZLETON 15' QUADRANGLE



Mapped, edited, and published by the Geological Survey  
Control by USGS, USC&GS, and  
Pennsylvania Department of Highways  
Topography from aerial photographs by multiplex methods  
Aerial photographs taken 1942. Field check 1947  
Polyconic projection. 1927 North American datum  
10,000-foot grids based on Pennsylvania coordinate system,  
north and south zones  
Contours in strip mine areas compiled from 1942 photography  
Red tint indicates areas in which only  
landmark buildings are shown

TRUE NORTH  
MAGNETIC NORTH  
APPROXIMATE MEAN  
DECLINATION, 1947



THIS MAP COMPLIES WITH NATIONAL MAP ACCURACY STANDARDS  
FOR SALE BY U. S. GEOLOGICAL SURVEY, WASHINGTON 25, D. C.

USGS  
HISTORICAL FILE  
TOPOGRAPHIC DIVISION

U. S. G. S.  
FILE COPY  
Inspection and Editing

ROAD CLASSIFICATION  
HARD-SURFACE ALL WEATHER ROADS DRY WEATHER ROADS  
Heavy-duty 4 LANE IS LANE Improved dirt 2 LANE IS LANE  
Medium-duty 4 LANE IS LANE Unimproved dirt 2 LANE IS LANE  
Loose-surface, graded, or narrow hard-surface 2 LANE IS LANE  
U. S. Route State Route

TAMAQUA, PA.  
SW 1/4 HAZLETON 15' QUADRANGLE  
N4045-W7552.5/7.5

EDITION OF 1950

JUN 16 1950 3245