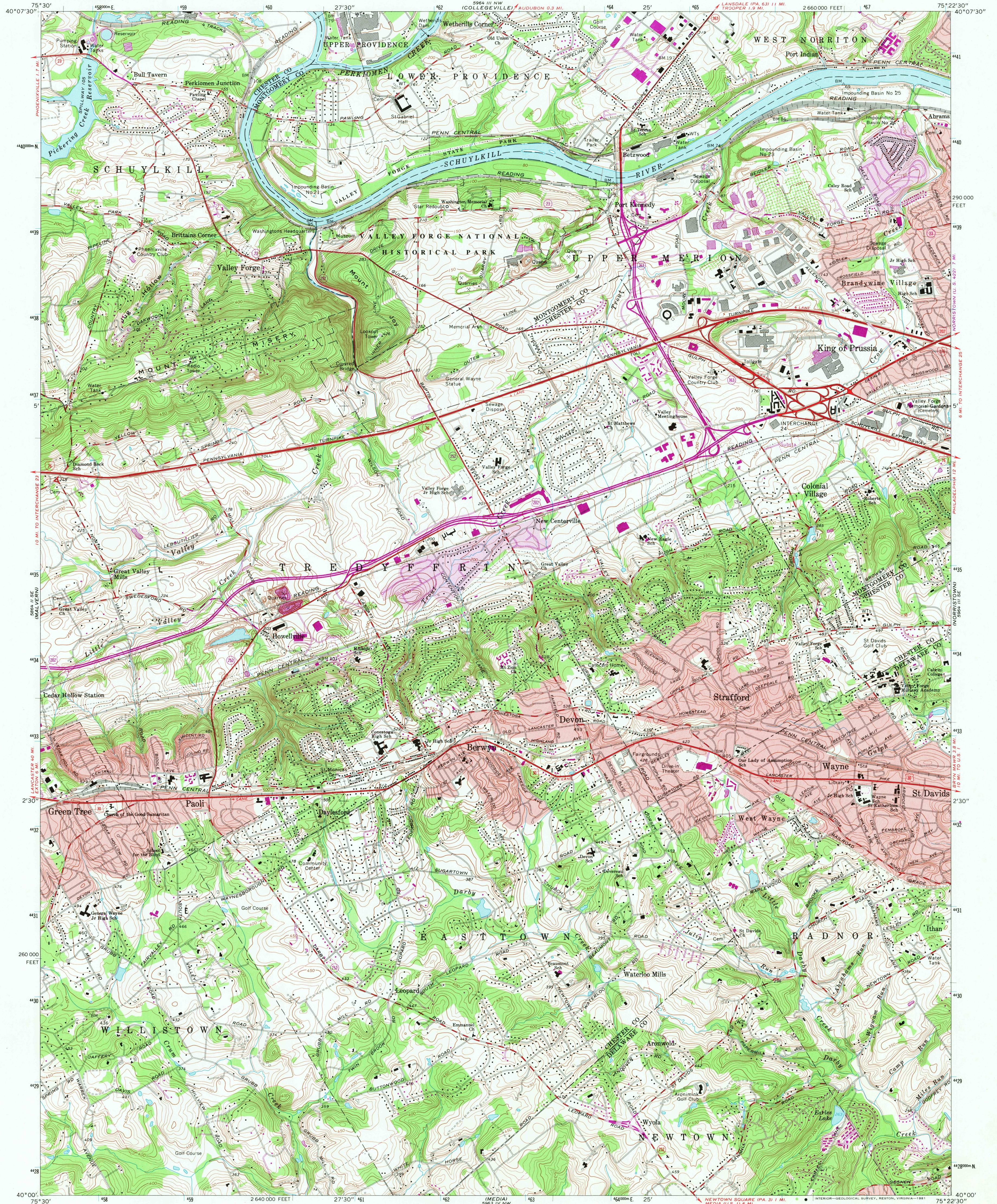


UNITED STATES  
DEPARTMENT OF THE INTERIOR  
GEOLOGICAL SURVEY

VALLEY FORGE QUADRANGLE  
PENNSYLVANIA  
7.5 MINUTE SERIES (TOPOGRAPHIC)



Mapped, edited, and published by the Geological Survey in cooperation with Pennsylvania Department of Internal Affairs, Topographic and Geologic Survey

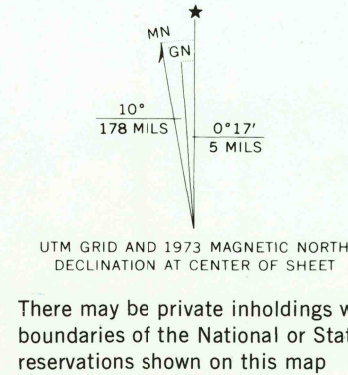
Control by USGS, USC&GS, and USCE

Topography by photogrammetric methods from aerial photographs taken 1950. Field checked 1952. Revised from aerial photographs taken 1965. Field checked 1966

Polyconic projection. 10,000-foot grid ticks based on Pennsylvania coordinate system, south zone. 1000-meter Universal Transverse Mercator grid ticks, zone 18 shown in blue. 1927 North American Datum. To place on predicted North American Datum 1983, move projection lines 6 meters south and 31 meters west as shown by dashed corner ticks

Fine red dashed lines indicate selected fence and field lines where generally visible on aerial photographs. This information is unchecked

Red tint indicates areas in which only landmark buildings are shown



SCALE 1:24,000

CONTOUR INTERVAL 10 FEET

NATIONAL GEODETIC VERTICAL DATUM OF 1929

THIS MAP COMPLIES WITH NATIONAL MAP ACCURACY STANDARDS  
FOR SALE BY U. S. GEOLOGICAL SURVEY, RESTON, VIRGINIA 22092.  
A FOLDER DESCRIBING TOPOGRAPHIC MAPS AND SYMBOLS IS AVAILABLE ON REQUEST



ROAD CLASSIFICATION

Heavy-duty ——— Light-duty ———

Medium-duty ——— Unimproved dirt ———

Interstate Route U. S. Route State Route

USGS  
HISTORICAL FILE  
NATIONAL MAPPING DIVISION

VALLEY FORGE, PA.  
N4000—W7522.5/7.5

1966  
PHOTOREVISED 1973  
AMS 5964 III SW—SERIES V831

Revisions shown in purple compiled from aerial photographs taken 1973. This information not field checked

Purple tint indicates extension of urban areas

AUG 28 1981  
53 00