

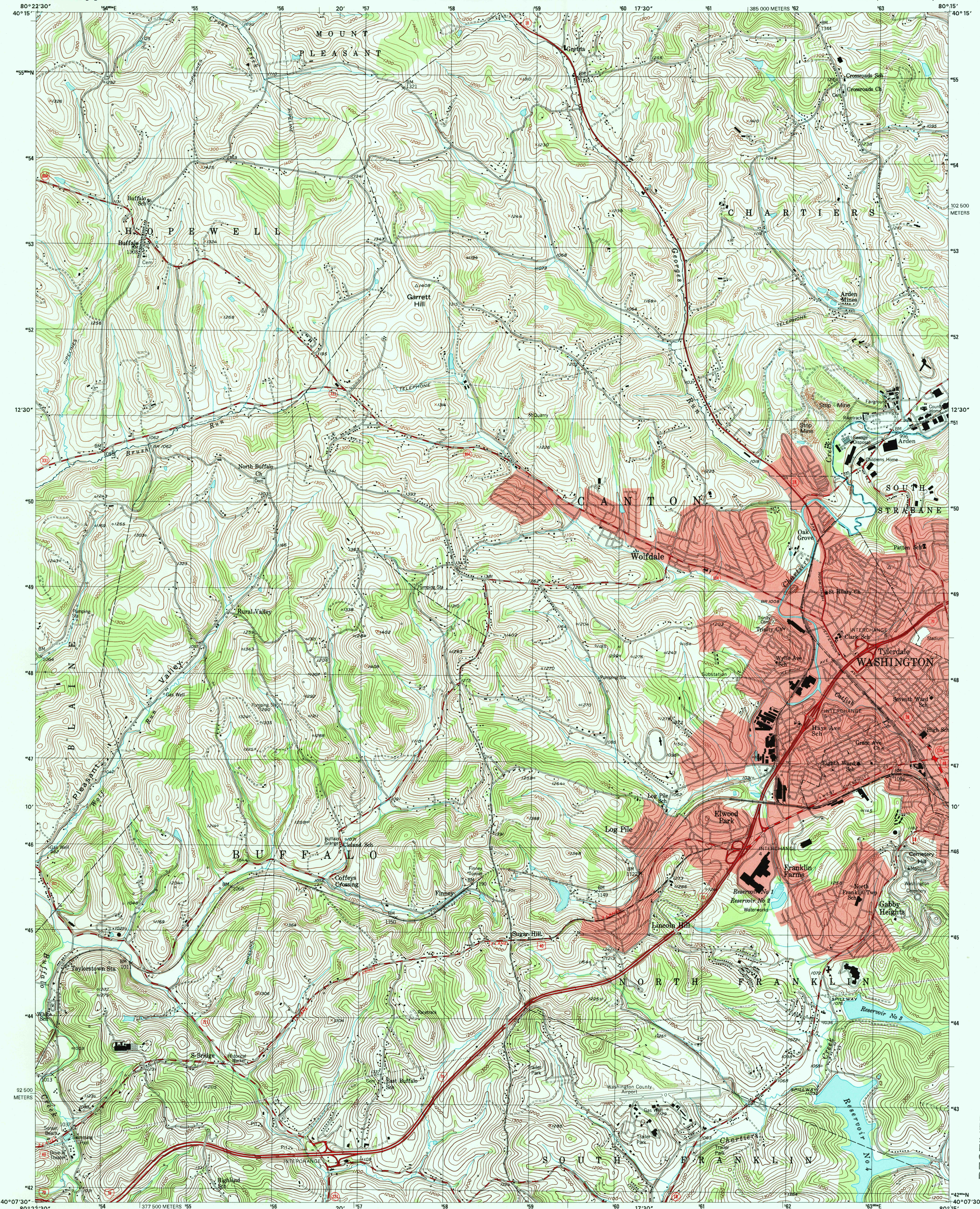


U.S. DEPARTMENT OF THE INTERIOR
U.S. GEOLOGICAL SURVEY



COMMONWEALTH OF PENNSYLVANIA
DEPARTMENT OF CONSERVATION AND NATURAL RESOURCES
BUREAU OF TOPOGRAPHIC AND GEOLOGIC SURVEY

WASHINGTON WEST QUADRANGLE
PENNSYLVANIA-WASHINGTON CO.
7.5-MINUTE SERIES (TOPOGRAPHIC)



Produced by the United States Geological Survey
in cooperation with Pennsylvania Department of
Conservation and Natural Resources, Bureau of
Topographic and Geologic Survey

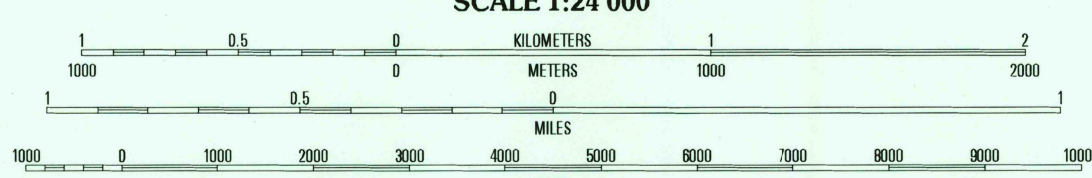
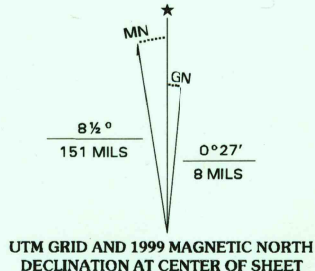
Topography compiled 1993. Planimetry derived from imagery
taken 1993. Survey control current as of 1994.

North American Datum of 1983 (NAD 83). Projection and
1000-meter grid: Universal Transverse Mercator, zone 17
2500-meter ticks: Pennsylvania Coordinate System of 1983
(south zone)

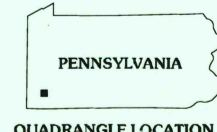
North American Datum of 1927 (NAD 27) is shown by dashed
corner ticks. The values of the shift between NAD 83 and
NAD 27 for 7.5-minute intersections are obtainable from
National Geodetic Survey NADCON software.

There may be private inholdings within the boundaries of the
National or State reservations shown on this map.

Landmark buildings verified 1994



CONTOUR INTERVAL 20 FEET
NATIONAL GEODETIC VERTICAL DATUM OF 1929
TO CONVERT FROM FEET TO METERS, MULTIPLY BY 0.3048



QUADRANGLE LOCATION

ROAD CLASSIFICATION

Primary highway hard surface	Light-duty road, hard or improved surface
Secondary highway hard surface	Unimproved road

Interstate Route U.S. Route State Route

1	2	3	1 Avella
4	5	6	2 Midway
7	8	9	3 Canonsburg
			4 West Middletown
			5 Washington East
			6 Clayville
			7 Prosperity
			8 Amity

WASHINGTON WEST, PA

1993

NIMA 4964 III NE-SERIES V831

RECEIVED

JUL 31 2000

USGS/DCNR
HISTORICAL MAP ARCHIVES

