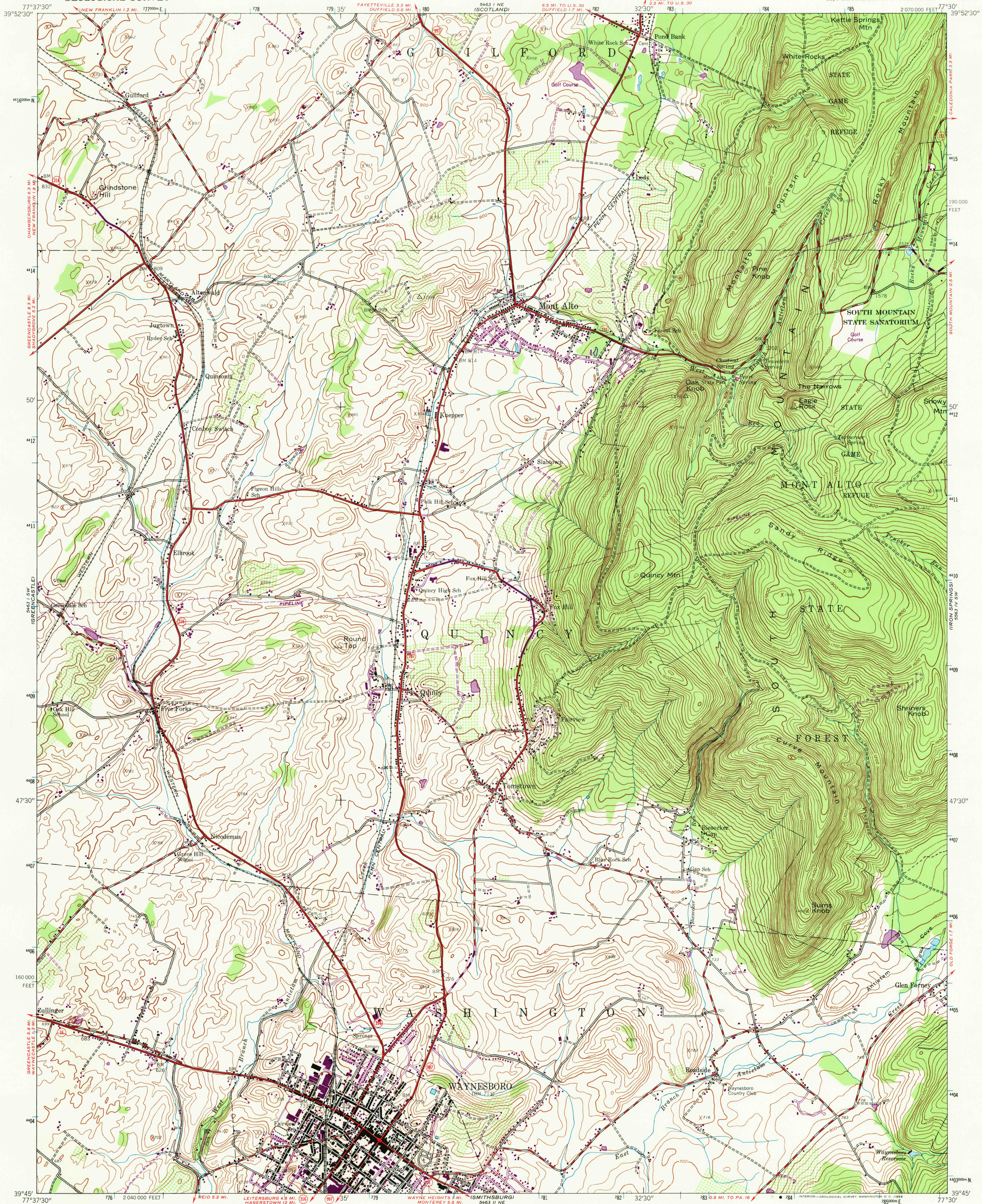


UNITED STATES
DEPARTMENT OF THE INTERIOR
GEOLOGICAL SURVEY

WAYNESBORO QUADRANGLE
PENNSYLVANIA—FRANKLIN CO.
7.5 MINUTE SERIES (TOPOGRAPHIC)
SE/4 CHAMBERSBURG 15' QUADRANGLE



Map by the Army Map Service
Published for civil use by the Geological Survey

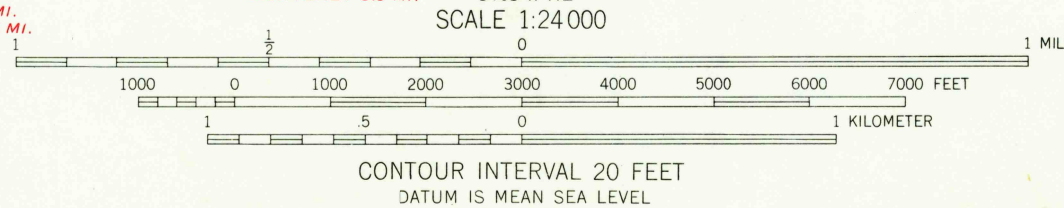
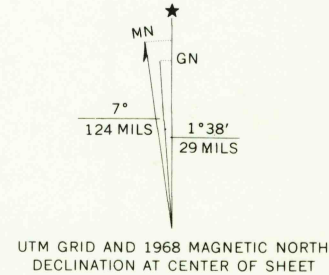
Control by USGS, USC&GS, and USFS

Topography from aerial photographs by photogrammetric methods
Aerial photographs taken 1943. Field check 1944

Polyconic projection. 1927 North American datum
10,000-foot grid based on Pennsylvania coordinate system, south zone
1000-meter Universal Transverse Mercator grid ticks,
zone 18, shown in blue

No distinction is made between dwellings, barns,
commercial and industrial buildings

Revisions shown in purple compiled by Geological Survey in
cooperation with State of Pennsylvania agencies, from aerial
photographs taken 1968. This information not field checked



THIS MAP COMPLIES WITH NATIONAL MAP ACCURACY STANDARDS
FOR SALE BY U. S. GEOLOGICAL SURVEY, WASHINGTON, D. C. 20242
A FOLDER DESCRIBING TOPOGRAPHIC MAPS AND SYMBOLS IS AVAILABLE ON REQUEST

USGS
HISTORICAL FILE
TOPOGRAPHIC DIVISION

U.S.G.S.
FILE COPY
TOPOGRAPHIC DIVISION

ROAD CLASSIFICATION
Heavy-duty ——— Light-duty ———
Medium-duty ——— Unimproved dirt ———
State Route ———
WAYNESBORO, PA.
SE/4 CHAMBERSBURG 15' QUADRANGLE
N3945-W7730/7.5
1944
PHOTOREVISED 1968
AMS 5463 1 SE—SERIES V831

3590