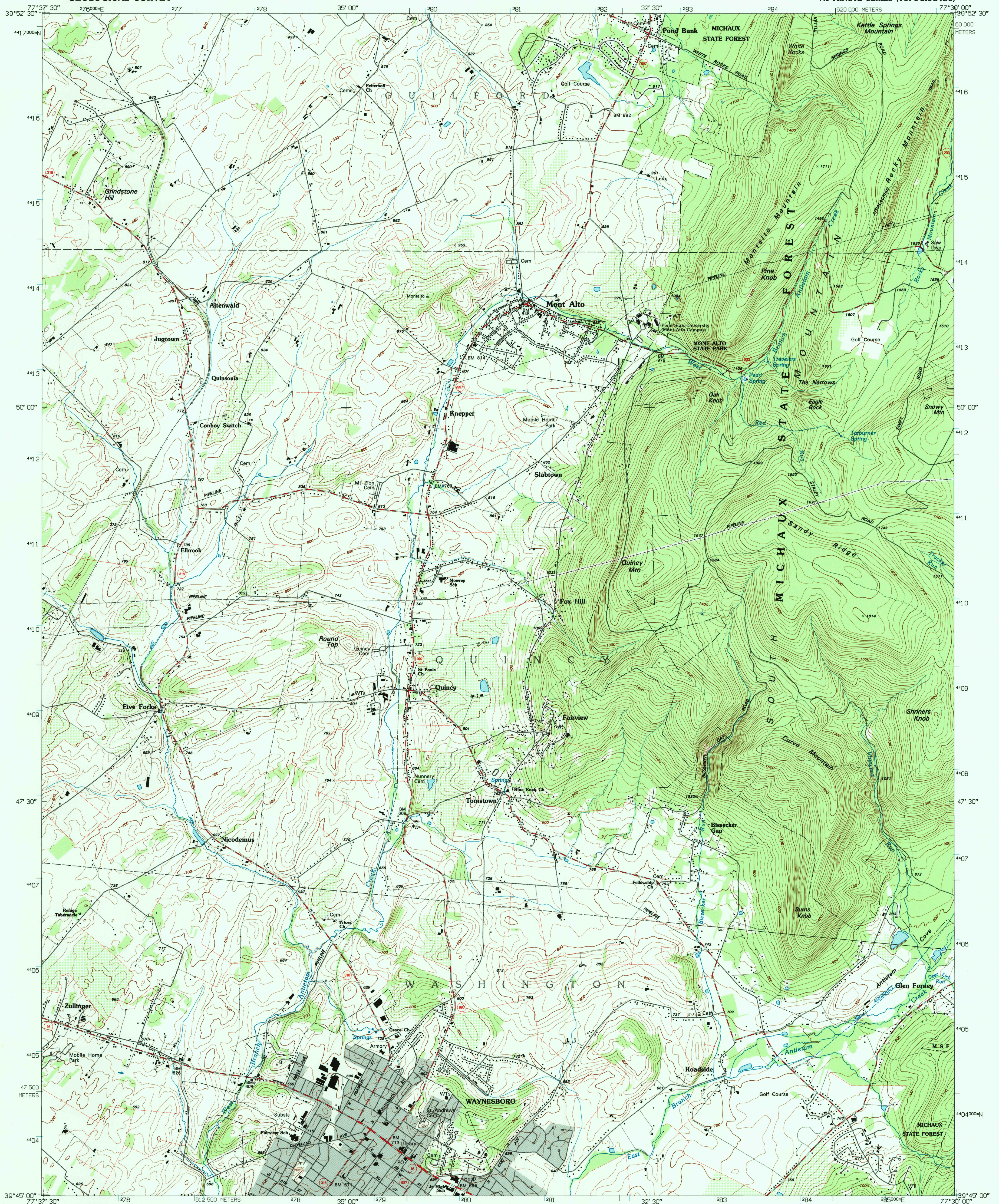


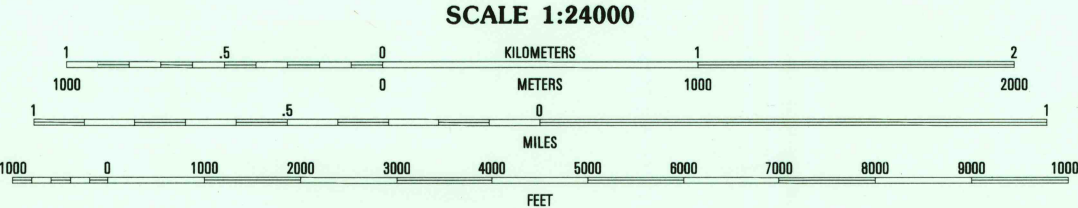
UNITED STATES
DEPARTMENT OF THE INTERIOR
GEOLOGICAL SURVEY

WAYNESBORO QUADRANGLE
PENNSYLVANIA-FRANKLIN CO.
7.5 MINUTE SERIES (TOPOGRAPHIC)



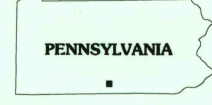
Produced by the United States Geological Survey
Compiled from imagery dated 1988 and other sources
Field checked 1990. Map edited 1995
North American Datum of 1983 (NAD 83). Projection and
blue 1000-meter ticks: Universal Transverse Mercator, zone 18
2 500-meter ticks: Pennsylvania Coordinate System of 1983 (south zone)
North American Datum of 1927 (NAD 27) is shown by dashed
corner ticks. The values of the shift between NAD 83 and NAD 27
for 7.5-minute intersections are obtainable from National Geodetic
Survey NADCON software.
There may be private inholdings within the boundaries of
the National or State reservations shown on this map.

UTM GRID AND 1995 MAGNETIC NORTH
DECLINATION AT CENTER OF SHEET



CONTOUR INTERVAL 20 FEET
NATIONAL GEODETIC VERTICAL DATUM OF 1929

THIS MAP COMPLIES WITH NATIONAL MAP ACCURACY STANDARDS
FOR SALE BY U.S. GEOLOGICAL SURVEY
DENVER, COLORADO 80225, OR RESTON, VIRGINIA 22092
A FOLDER DESCRIBING TOPOGRAPHIC MAPS AND SYMBOLS IS AVAILABLE ON REQUEST



QUADRANGLE LOCATION

1	2	3	1 Chambersburg
			2 Scotland
			3 Caledonia Park
4		5	4 Greencastle
			5 Iron Springs
			6 Hagerstown
6	7	8	7 Smithsburg
			8 Blue Ridge Summit

ADJOINING 7.5' QUADRANGLE NAMES

ROAD CLASSIFICATION
Primary highway Light-duty road, hard or
hard surface improved surface
Secondary highway Unimproved road
hard surface
Interstate Route U.S. Route State Route

WAYNESBORO, PA
39077-G5-TF-024
1990

DMA 5463 I SE - SERIES Y831

USGS HISTORICAL
MAP ARCHIVES
JUN 16 1995
REC'D FILE COPY