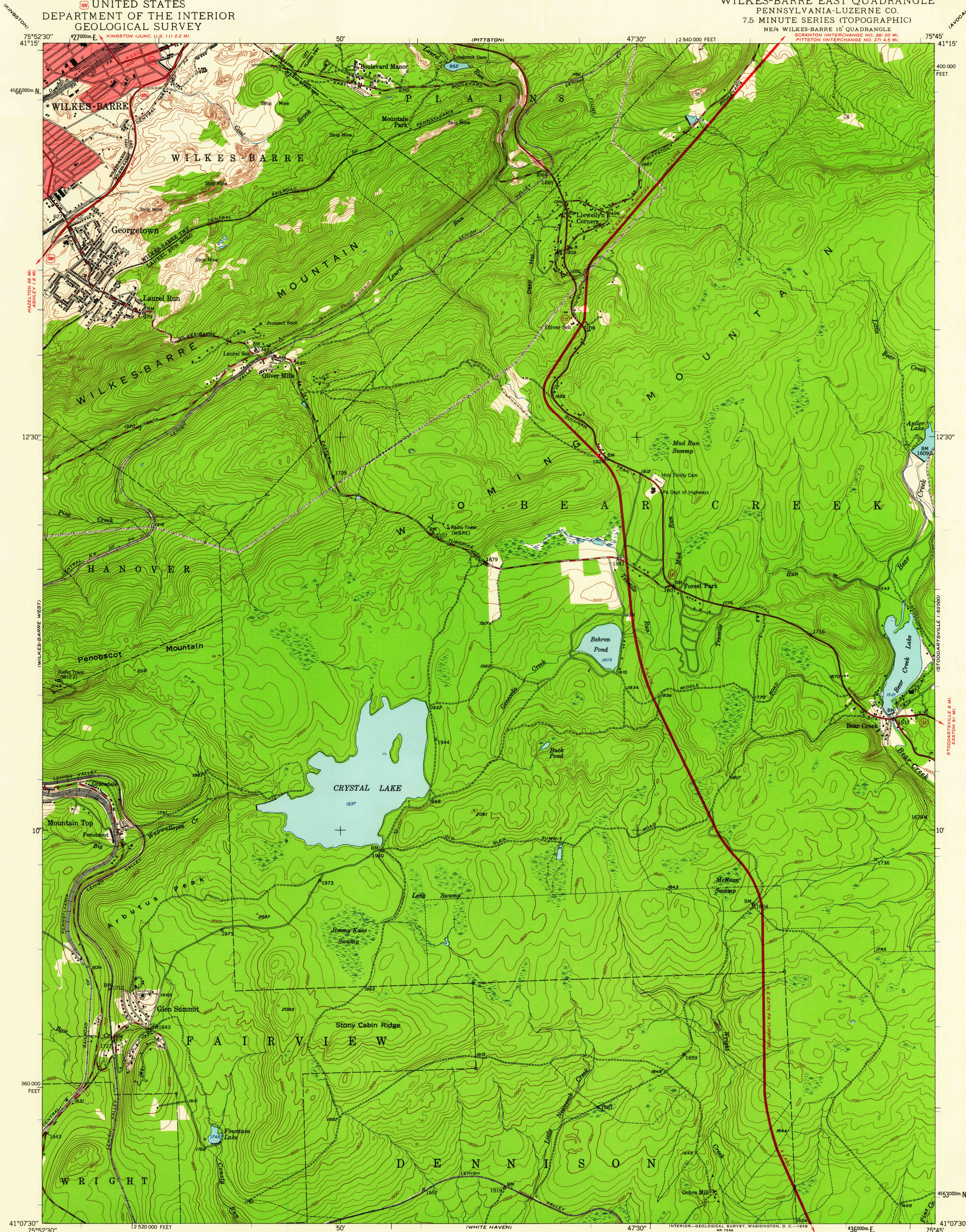


UNITED STATES  
DEPARTMENT OF THE INTERIOR  
GEOLOGICAL SURVEY

WILKES-BARRE EAST QUADRANGLE  
PENNSYLVANIA-LUZERNE CO.  
7.5 MINUTE SERIES (TOPOGRAPHIC)  
NE 1/4 WILKES-BARRE 15' QUADRANGLE  
SCRANTON INTERCHANGE NO. 381 20 MI.  
PITTSBURGH INTERCHANGE NO. 371 4.5 MI.

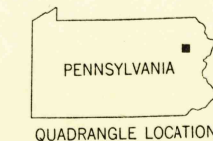


Mapped, edited, and published by the Geological Survey  
Control by USGS and USC&GS  
Topography from aerial photographs by multiplex methods  
Aerial photographs taken 1942. Field check 1947  
Polyconic projection. 1927 North American datum  
10,000-foot grid based on Pennsylvania coordinate system,  
north zone  
Red tint indicates areas in which only  
landmark buildings are shown  
Contours in strip mine and mine dump areas  
compiled from 1942 photography  
1000-meter Universal Transverse Mercator grid ticks,  
zone 18, shown in blue

APPROXIMATE MEAN  
DECLINATION, 1947

SCALE 1:24,000  
1 0 1000 2000 3000 4000 5000 6000 7000 FEET  
1 0 5 10 KILOMETER  
CONTOUR INTERVAL 20 FEET  
DATUM IS MEAN SEA LEVEL

USGS  
HISTORICAL FILE  
TOPOGRAPHIC DIVISION



ROAD CLASSIFICATION  
Heavy-duty ——— Light-duty ———  
Medium-duty ——— Unimproved dirt ———  
U.S. Route ——— State Route ———

WILKES-BARRE EAST, PA.  
NE 1/4 WILKES-BARRE 15' QUADRANGLE  
N4107.5-W7545/7.5

1947

THIS MAP COMPLIES WITH NATIONAL MAP ACCURACY STANDARDS  
FOR SALE BY U. S. GEOLOGICAL SURVEY, WASHINGTON 25, D. C.  
A FOLDER DESCRIBING TOPOGRAPHIC MAPS AND SYMBOLS IS AVAILABLE ON REQUEST

U.S.G.S.  
FILE COPY  
TOPOGRAPHIC DIVISION

NOV 20 1959

2010