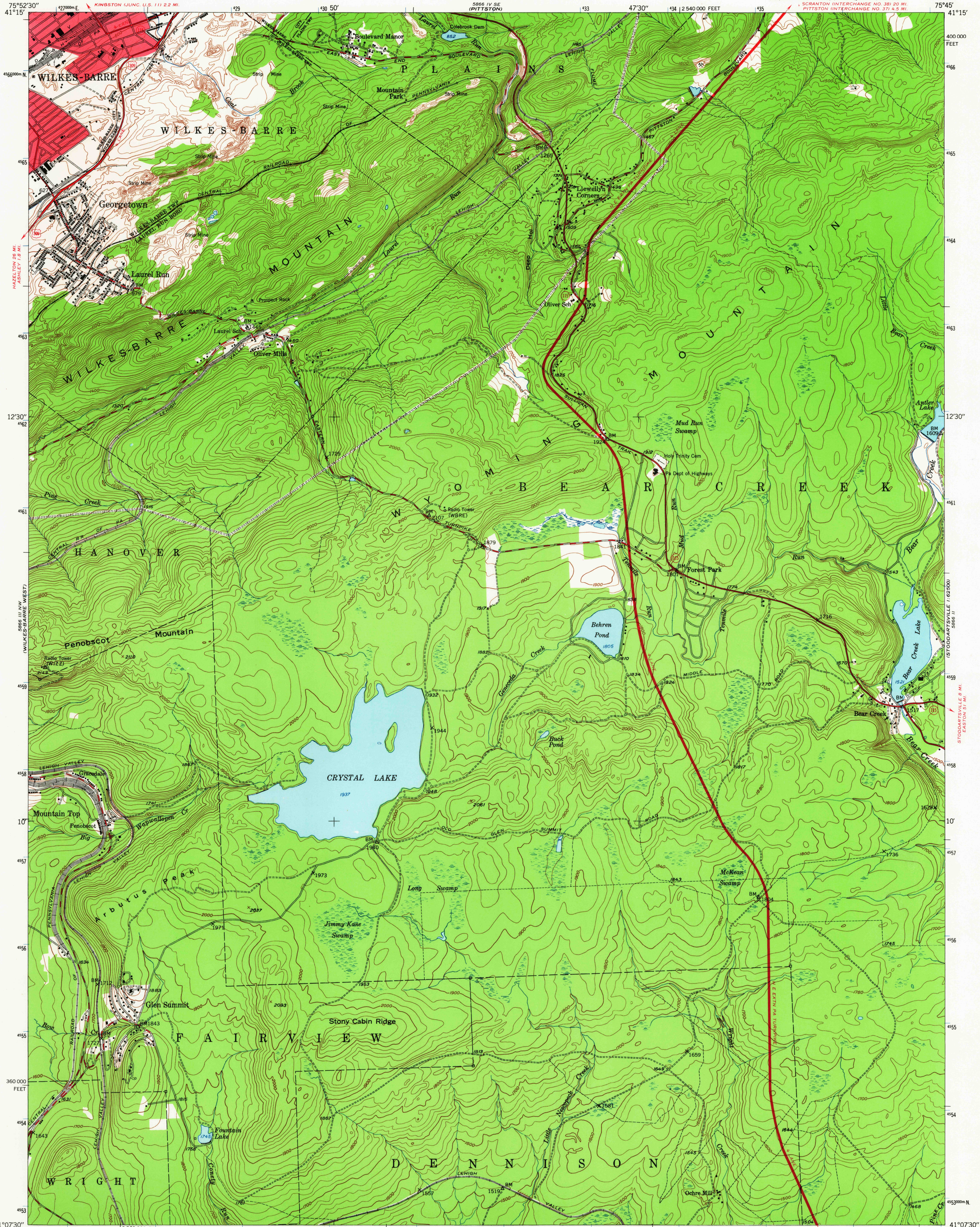


UNITED STATES
DEPARTMENT OF THE INTERIOR
GEOLOGICAL SURVEY

WILKES-BARRE EAST QUADRANGLE
PENNSYLVANIA-LUZERNE CO.
7.5 MINUTE SERIES (TOPOGRAPHIC)

NE 1/4 WILKES-BARRE 15' QUADRANGLE
SCRAWANTON INTERCHANGE NO. 381.20 MI.
PITTSBURGH INTERCHANGE NO. 371.45 MI.



Mapped, edited, and published by the Geological Survey
Control by USGS and USC&GS

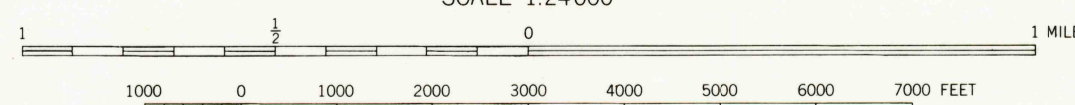
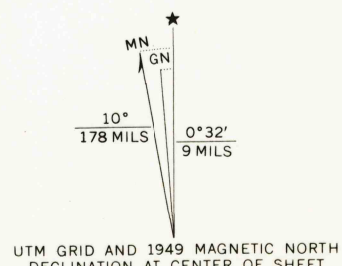
Topography from aerial photographs by multiplex methods
Aerial photographs taken 1942. Field check 1947

Polyconic projection. 1927 North American datum
10,000-foot grid based on Pennsylvania coordinate system,
north zone

Red tint indicates areas in which only
landmark buildings are shown

Contours in strip mine and mine dump areas
compiled from 1942 photography

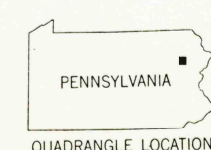
1000-meter Universal Transverse Mercator grid ticks,
zone 18, shown in blue



CONTOUR INTERVAL 20 FEET
DATUM IS MEAN SEA LEVEL

THIS MAP COMPLIES WITH NATIONAL MAP ACCURACY STANDARDS
FOR SALE BY U.S. GEOLOGICAL SURVEY, WASHINGTON, D.C. 20242
A FOLDER DESCRIBING TOPOGRAPHIC MAPS AND SYMBOLS IS AVAILABLE ON REQUEST

USGS
HISTORICAL FILE
TOPOGRAPHIC DIVISION



ROAD CLASSIFICATION
Heavy-duty ——— Light-duty ———
Medium-duty ——— Unimproved dirt ———
U.S. Route ——— State Route ———

WILKES-BARRE EAST, PA.
NE 1/4 WILKES-BARRE 15' QUADRANGLE
N4107.5-W7545/7.5

1947
AMS 5866 III NE-SERIES V831

U.S.G.S.
FILE COPY
TOPOGRAPHIC DIVISION

3245
FEB 11 1966