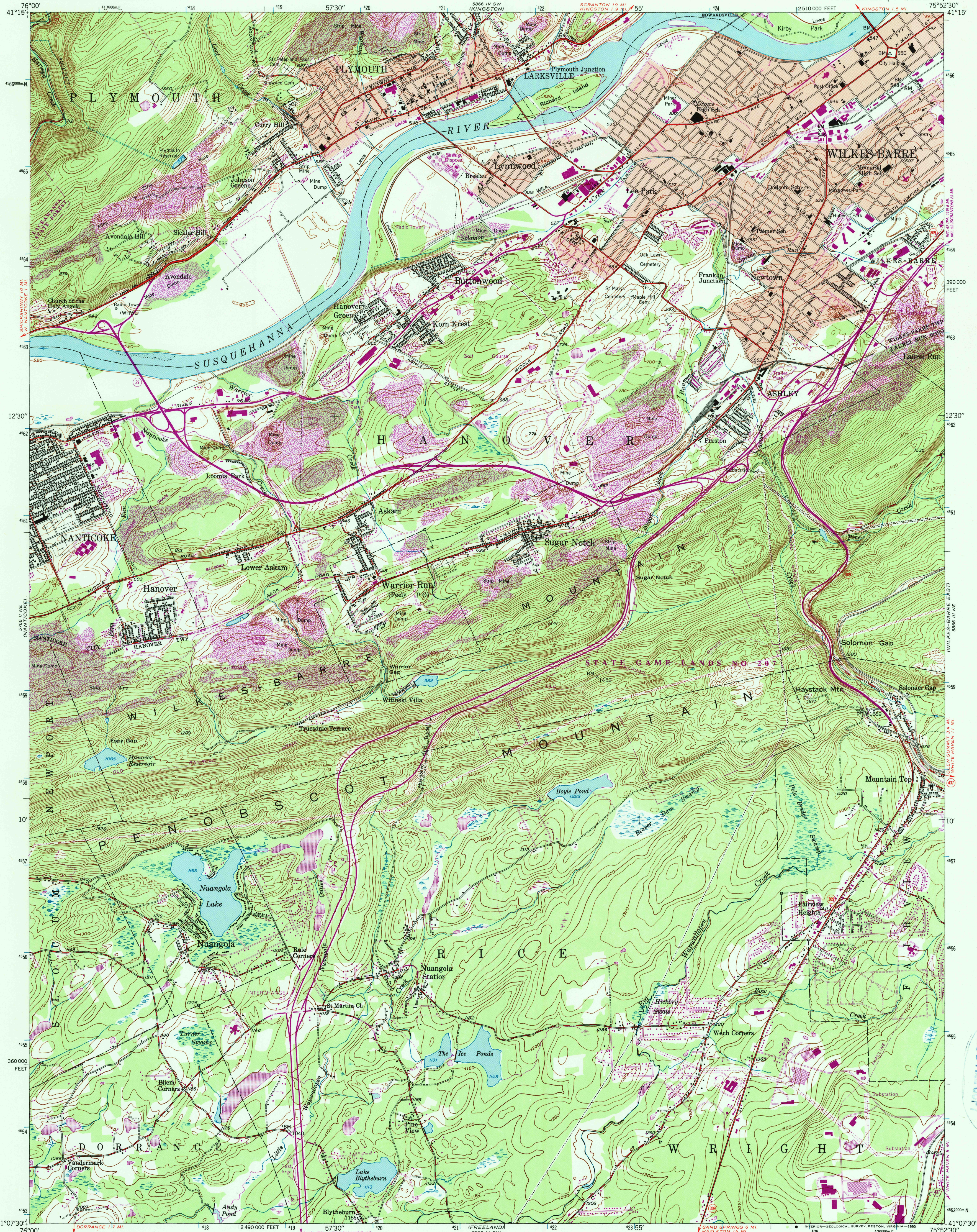
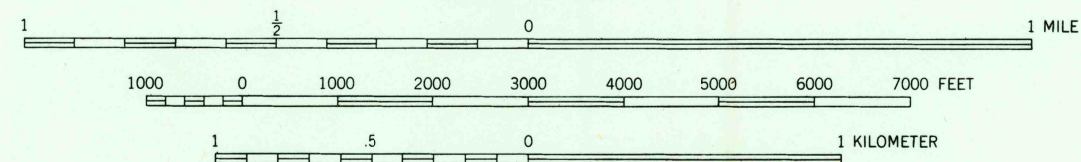
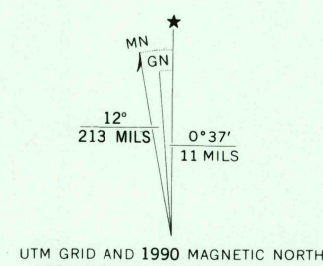


UNITED STATES
DEPARTMENT OF THE INTERIOR
GEOLOGICAL SURVEY

WILKES-BARRE WEST QUADRANGLE
PENNSYLVANIA—LUZERNE CO.
7.5 MINUTE SERIES (TOPOGRAPHIC)



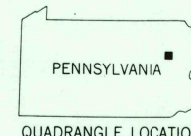
Maped, edited, and published by the Geological Survey
Control by USGS and USC&GS
Topography by photogrammetric methods from aerial photographs
taken 1942. Field checked 1947
Polyconic projection. 1927 North American datum
10,000-foot grid based on Pennsylvania coordinate system, north zone
1000-meter Universal Transverse Mercator grid ticks, zone 18,
shown in blue
To place on the predicted North American Datum 1983
move the projection lines 6 meters south and
30 meters west as shown by dashed corner ticks
Red tint indicates areas in which only landmark buildings are shown
There may be private inholdings within the boundaries of
the National or State reservations shown on this map



CONTOUR INTERVAL 20 FEET
NATIONAL GEODETIC VERTICAL DATUM OF 1929

THIS MAP COMPLIES WITH NATIONAL MAP ACCURACY STANDARDS
FOR SALE BY U.S. GEOLOGICAL SURVEY
DENVER, COLORADO 80225 OR RESTON, VIRGINIA 22092
A FOLDER DESCRIBING TOPOGRAPHIC MAPS AND SYMBOLS IS AVAILABLE ON REQUEST

Revisions shown in purple and woodland compiled in cooperation
with Commonwealth of Pennsylvania agencies from aerial
photographs taken 1987 and other sources. This information
not field checked. Map edited 1990



ROAD CLASSIFICATION
Heavy-duty ——— Light-duty ———
Medium-duty ——— Unimproved dirt ———
Interstate Route U.S. Route State Route

WILKES-BARRE WEST, PA.
41075-B8-TF-024

1947
PHOTOREVISED 1990
DMA 5866 III NW—SERIES 7831

SEP 19 1980
REC'D FILE COPY
USGS AND HISTORICAL MAP