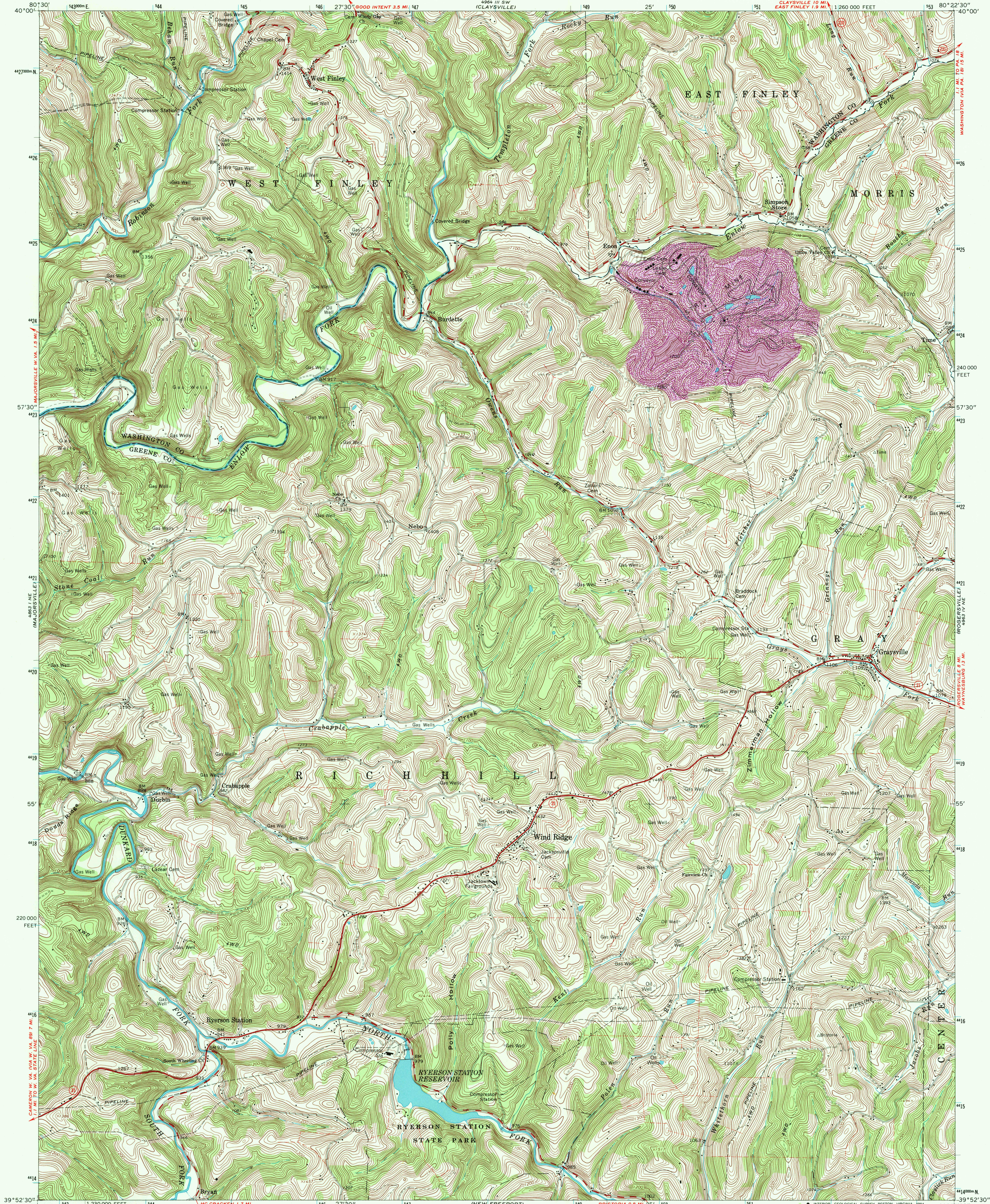
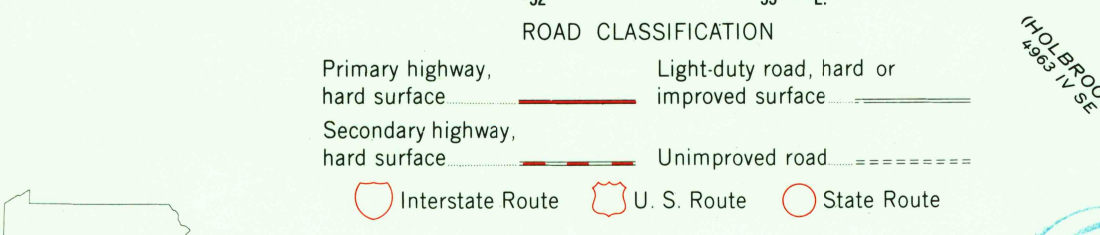
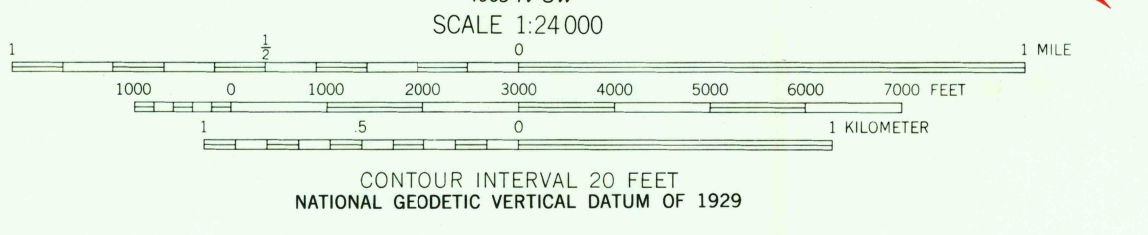
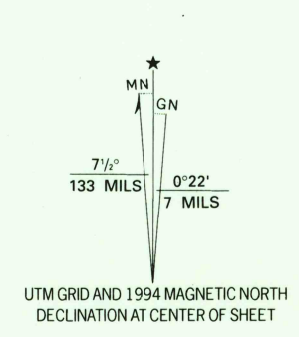


UNITED STATES  
DEPARTMENT OF THE INTERIOR  
GEOLOGICAL SURVEY

WIND RIDGE QUADRANGLE  
PENNSYLVANIA  
7.5 MINUTE SERIES (TOPOGRAPHIC)



Produced by the United States Geological Survey  
in cooperation with Commonwealth of Pennsylvania agencies  
Control by USGS and NOS/NOAA  
Topography by photogrammetric methods from aerial photographs  
taken 1962. Field checked 1964. Revised from aerial photographs  
taken 1991. Map edited 1994  
Projection and 10,000-foot grid ticks: Pennsylvania coordinate  
system, south zone (Lambert conformal conic)  
1000-meter Universal Transverse Mercator grid ticks, zone 17, shown in blue  
1927 North American Datum (NAD 27)  
North American Datum of 1983 (NAD 83) is shown by dashed corner ticks  
The values of the shift between NAD 27 and NAD 83 for 7.5-minute  
intersections are given in USGS Bulletin 1875  
There may be private inholdings within the boundaries of  
the National or State reservations shown on this map  
Fine red dashed lines indicate selected fence and field lines where  
generally visible on aerial photographs. This information is uncheckered  
Contours in strip mine areas may not accurately represent present topography  
Unlabeled wells are gas wells



THIS MAP COMPLIES WITH NATIONAL MAP ACCURACY STANDARDS  
FOR SALE BY U. S. GEOLOGICAL SURVEY, DENVER, COLORADO 80225  
OR RESTON, VIRGINIA 22092  
A FOLDER DESCRIBING TOPOGRAPHIC MAPS AND SYMBOLS IS AVAILABLE ON REQUEST



WIND RIDGE, PA.  
39080-H4-TF-024  
1964  
REVISED 1994  
DMA 4963 IV NW-SERIES V831

USGS AND HISTORICAL  
MAP ARCHIVES  
01 APR 1994  
REC'D FILE COPY