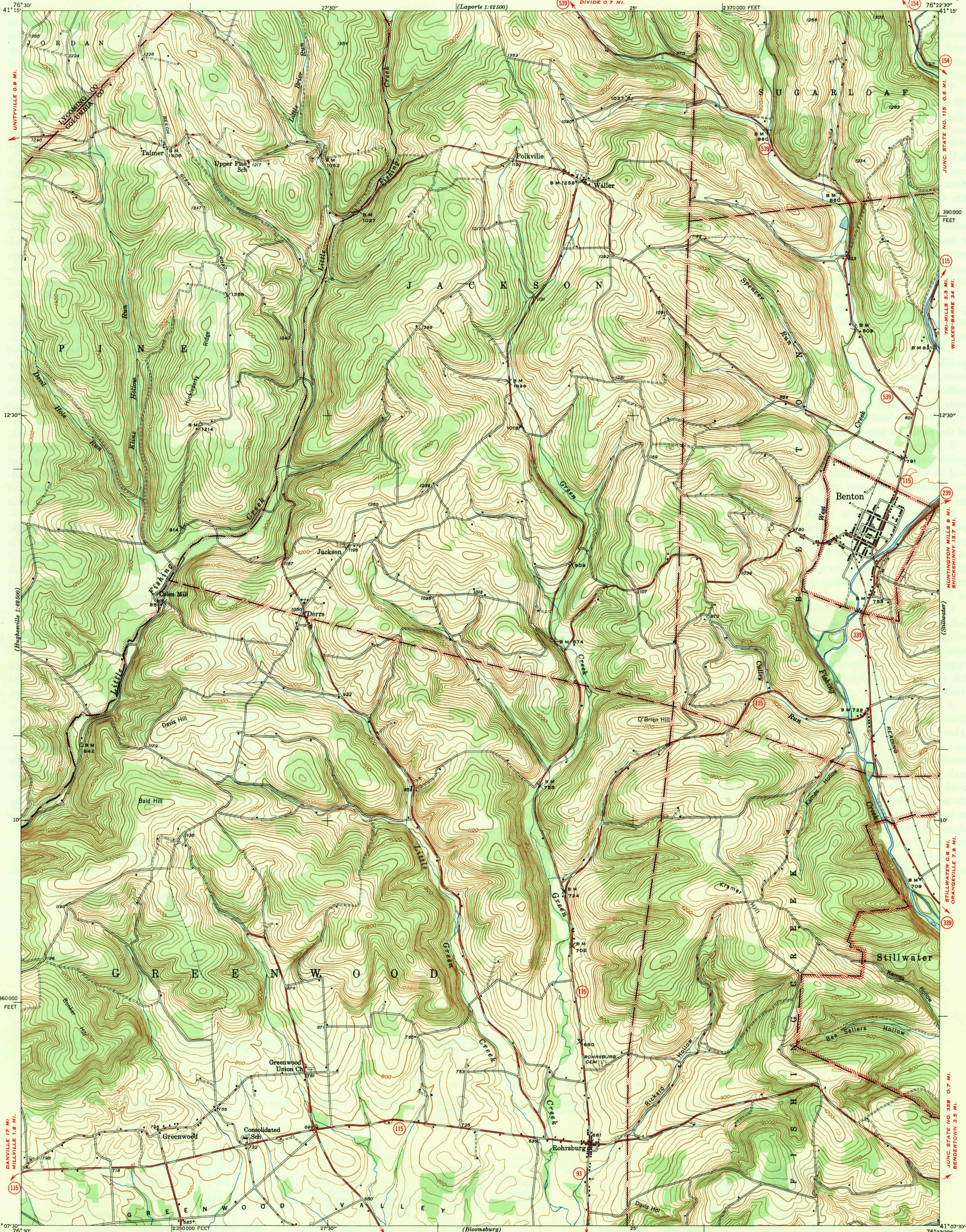


UNITED STATES  
DEPARTMENT OF THE INTERIOR  
GEOLOGICAL SURVEY

WAR DEPARTMENT  
CORPS OF ENGINEERS, U. S. ARMY

PENNSYLVANIA  
BENTON QUADRANGLE  
7 1/2-MINUTE SERIES



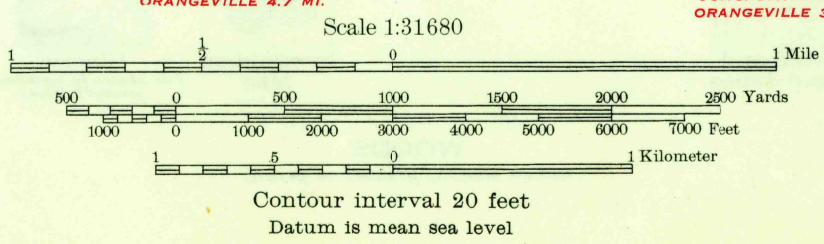
Mapped by the Geological Survey  
1944

ROAD CLASSIFICATION  
1946  
Dependable hard-surface  
heavy-duty road  
Secondary hard-surface  
all weather road  
More than two lanes indicated along road with tick at point of change

1946  
Dry weather roads  
Loose-surface graded  
Unsurfaced, graded  
Dirt road

U. S. Route 15  
State Route 26  
2 LANE, 4 LANE

APPROXIMATE MEAN  
DECLINATION, 1944



Polyconic projection. 1927 North American datum  
10000 foot grid based on Pennsylvania (North)  
rectangular coordinate system

USGS  
Historical File  
Topographic Division  
Inventories and Editing

BENTON, PA.  
Edition of 1947  
N4107.5-W7622.5/7.5

JUL 22 1947

4290