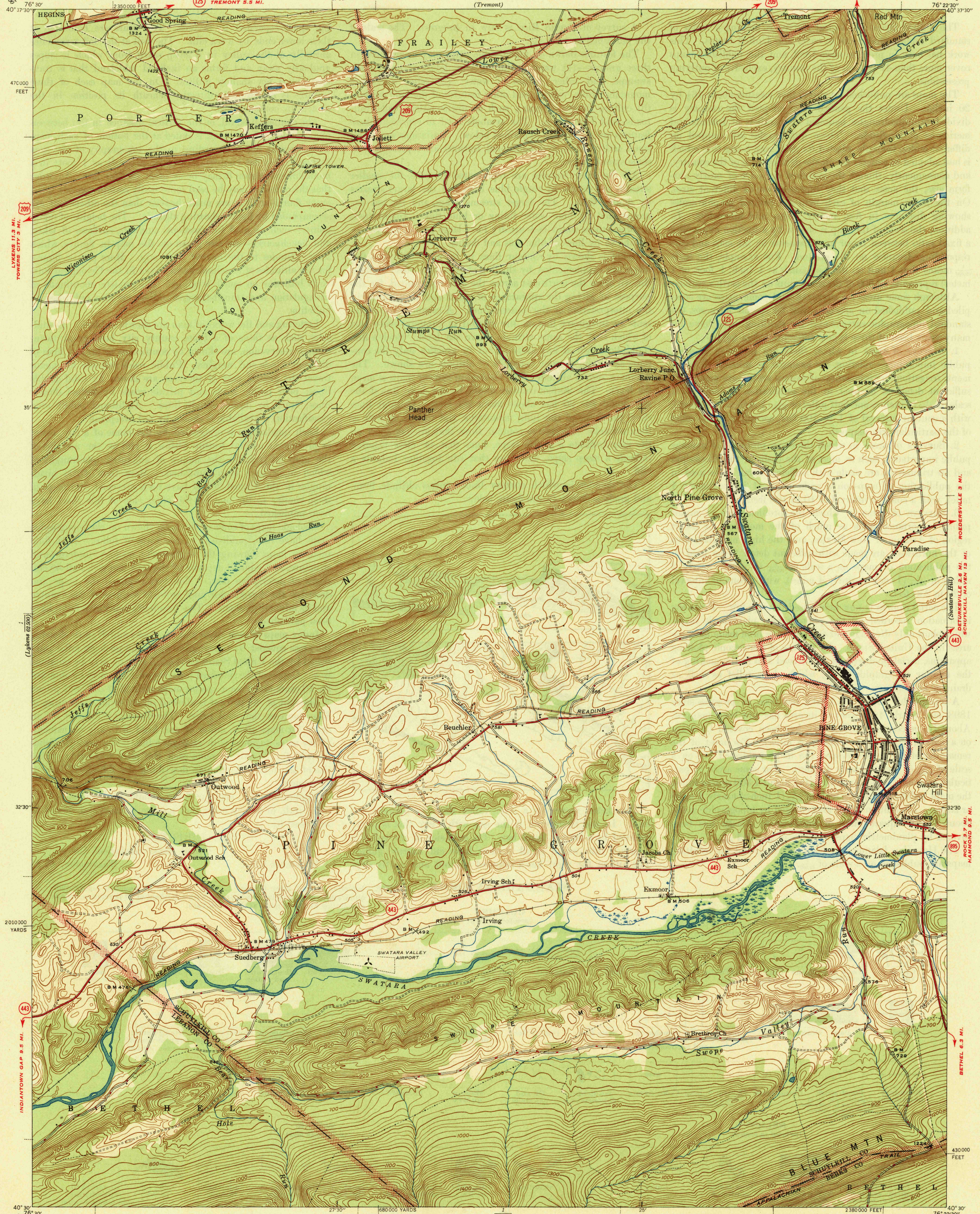


UNITED STATES
DEPARTMENT OF THE INTERIOR
GEOLOGICAL SURVEY

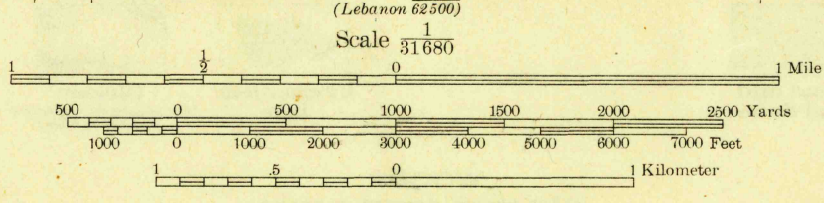
WAR DEPARTMENT
CORPS OF ENGINEERS, U. S. ARMY
(Tremont)

PENNSYLVANIA
PINE GROVE QUADRANGLE
7 1/2-MINUTE SERIES



Mapped by the Geological Survey
1946

TRUE NORTH
MAGNETIC NORTH
APPROXIMATE MEAN
DECLINATION 1946



ROAD CLASSIFICATION
1946
Dependable hard-surface heavy-duty road
Secondary hard-surface all-weather road
More than two lanes indicated along road with tick at point of change
Dry weather roads
Loose-surface graded
Unsurfaced, graded
Dirt road
State Route
U. S. Route

Polyconic projection, 1927 North American datum
5000 yard grid based on U. S. zone system, A
10000 foot grid based on Pennsylvania (South)
rectangular coordinate system

PINE GROVE, PA.
Edition of 1946

N4030-W7622.5/7.5

USGS
HISTORICAL FILE
TOPOGRAPHIC DIVISION