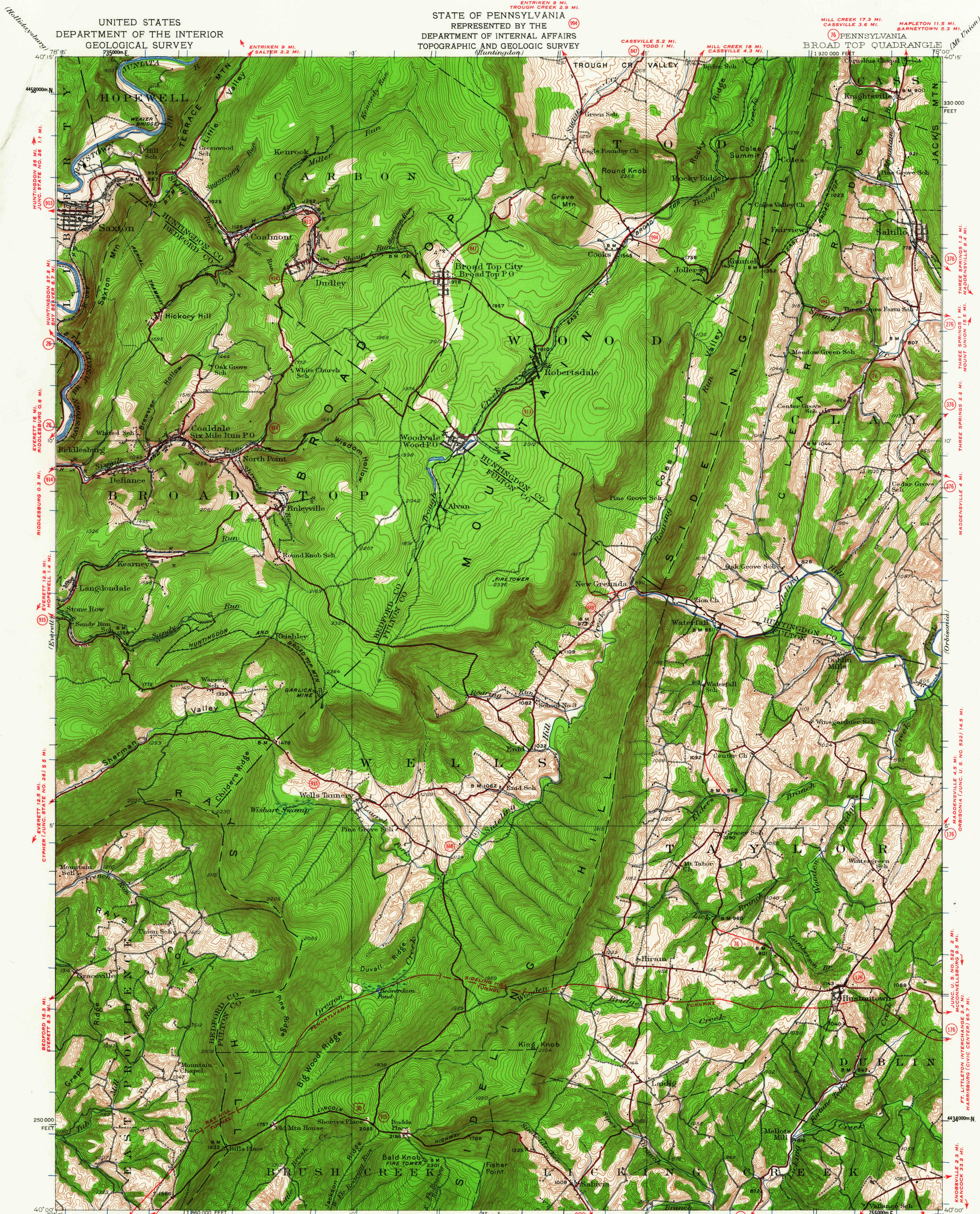


UNITED STATES
DEPARTMENT OF THE INTERIOR
GEOLOGICAL SURVEY

STATE OF PENNSYLVANIA
REPRESENTED BY THE
DEPARTMENT OF INTERNAL AFFAIRS
TOPOGRAPHIC AND GEOLOGIC SURVEY
(Huntingdon)

PENNSYLVANIA
BROAD TOP QUADRANGLE
1:920 000 FEET



Topography by C.W. Goodlove, J.K. Bailey,
R.F. Hamke, and W.A. Fisher.
Control by U.S. Geological Survey and
Pennsylvania State Highway Department
Surveyed in 1929-30
BREEZEWOOD INTERCHANGE 0.5 MI.
BEDFORD INTERCHANGE 17.5 MI.
EVERETT 9.2 MI.

APPROXIMATE MEAN
DECLINATION, 1930

SCALE 1:62500
CONTOUR INTERVAL 20 FEET
DATUM IS MEAN SEA LEVEL
FOR SALE BY U.S. GEOLOGICAL SURVEY, WASHINGTON 25, D. C.
A FOLDER DESCRIBING TOPOGRAPHIC MAPS AND SYMBOLS IS AVAILABLE ON REQUEST

HARRISONVILLE 1.1 MI.
NEEDMORE 13.5 MI.
USGS
Historical File
Topographic Division

Polyconic projection, 1927 North American datum
10,000-foot grid based on Pennsylvania (South)
rectangular coordinate system
1000-meter Universal Transverse Mercator grid ticks,
zone 17, shown in blue
JUNC. U.S. NO. 30 1.6 MI.
HARRISONVILLE 2.4 MI.
MC CONNELLSBURG 5.2 MI.
BROAD TOP, PA.
N 4000-W 7800/15
1930

ROUTES USUALLY TRAVELED
HARD IMPERVIOUS SURFACES
OTHER SURFACE IMPROVEMENTS
U.S. ROUTE 1945
STATE ROUTE

3015
MAY 3 1965