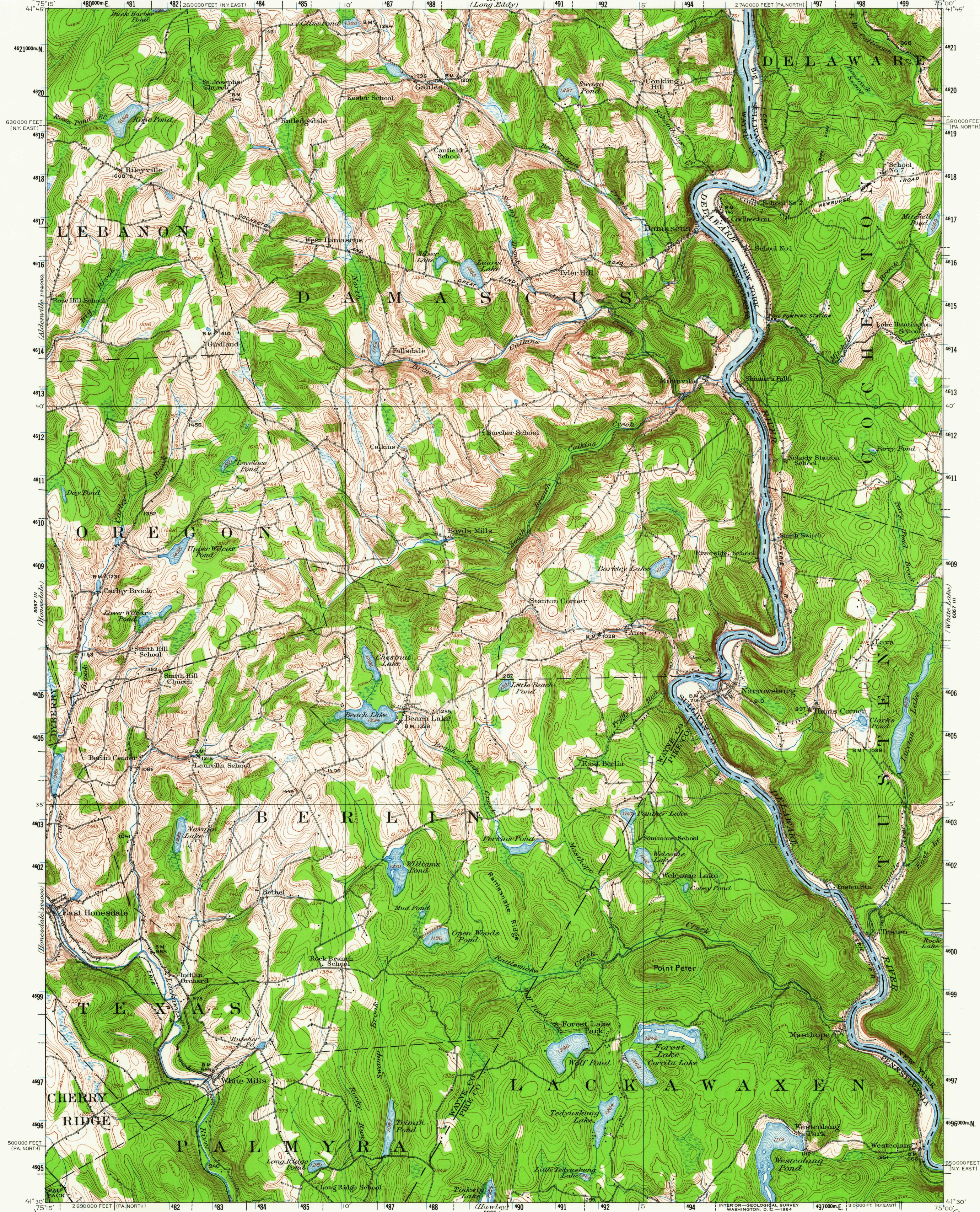


UNITED STATES
DEPARTMENT OF THE INTERIOR
GEOLOGICAL SURVEY

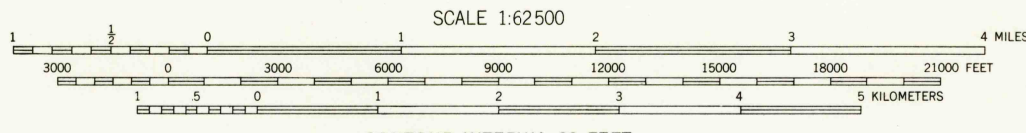
STATE OF PENNSYLVANIA
REPRESENTED BY THE
DEPARTMENT OF INTERNAL AFFAIRS
TOPOGRAPHIC AND GEOLOGIC SURVEY

STATE OF NEW YORK
REPRESENTED BY THE
DEPARTMENT OF PUBLIC WORKS

PENNSYLVANIA-NEW YORK
DAMASCUS QUADRANGLE



C.H. Birdseye, Chief Topographic Engineer.
Frank Sutton, Topographic Engineer in charge.
Topography by Robert Muldrow, H.H. Hodgeson,
H.E. Simmons, E.B. Hill, E.V. Holloway, G.E. Sisson, and J.S. Ward.
Control by Geo T. Hawkins, H.H. Hodgeson, F.J. McMaugh,
C.H. Semper, R.G. Clinette, and A.J. Kavanagh.
Surveyed in 1920.



CONTOUR INTERVAL 20 FEET
DATUM IS MEAN SEA LEVEL

USGS
Historical File
Topographic Division

Polyconic projection. 1927 North American datum
10,000-foot grids based on Pennsylvania (North) and
New York (East) rectangular coordinate system
1000-meter Universal Transverse Mercator grid ticks,
zone 18, shown in blue

DAMASCUS, PA.—N. Y.

N4130—W7500/15

1920

AMS 5967 II—SERIES V731

FOR SALE BY U.S. GEOLOGICAL SURVEY, WASHINGTON 25, D. C.
A FOLDER DESCRIBING TOPOGRAPHIC MAPS AND SYMBOLS IS AVAILABLE ON REQUEST

UTM GRID AND 1920 MAGNETIC NORTH
DECLINATION AT CENTER OF SHEET

SEP 2 1964

5785

U.S.G.S.
FILE COPY
TOPOGRAPHIC DIVISION