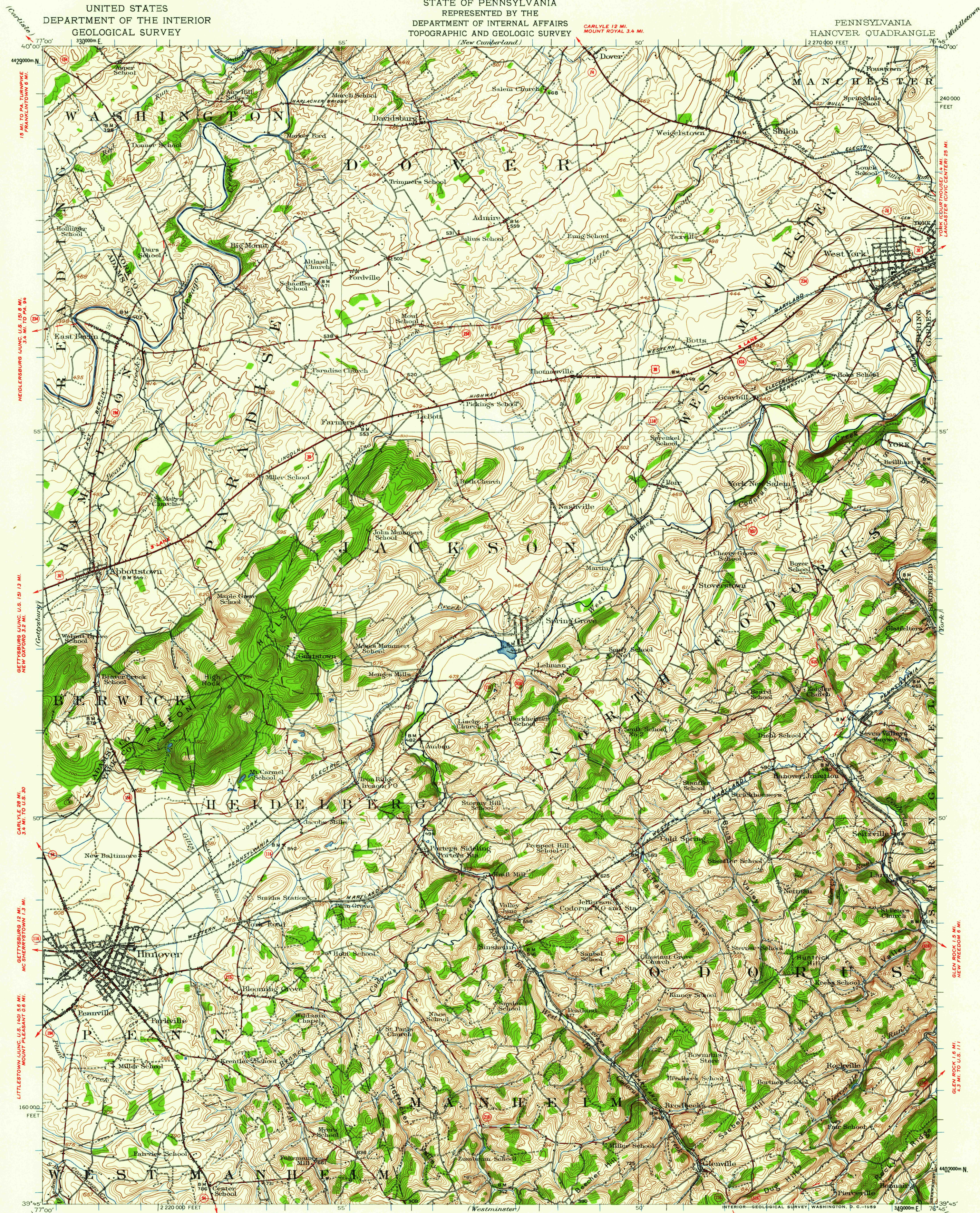


UNITED STATES  
DEPARTMENT OF THE INTERIOR  
GEOLOGICAL SURVEY

STATE OF PENNSYLVANIA  
REPRESENTED BY THE  
DEPARTMENT OF INTERNAL AFFAIRS  
TOPOGRAPHIC AND GEOLOGIC SURVEY  
(New Cumberland)

PENNSYLVANIA  
HANOVER QUADRANGLE



C. H. Birdseye, Chief Topographic Engineer.  
Frank Sutton, Topographic Engineer in charge.  
Topography by J. F. McBeth, M. A. Roudabush, and G. A. Mock.  
Control by S. S. Gannett, J. R. Ellis, W. Carvel Hall,  
F. J. McMaugh, J. F. McBeth, H. D. Hilton, Pennsylvania  
State Highway Department, and Pennsylvania Railroad  
Surveyed in 1920.

ROAD CLASSIFICATION  
Heavy-duty ——— Light-duty ———  
Medium-duty ——— Unimproved dirt ———  
U. S. Route ——— State Route ———

TRUE NORTH  
MAGNETIC NORTH  
APPROXIMATE MEAN  
DECLINATION, 1920

SCALE 1:62,500  
CONTOUR INTERVAL 20 FEET  
DATUM IS MEAN SEA LEVEL

FOR SALE BY U. S. GEOLOGICAL SURVEY, WASHINGTON 25, D. C.  
A FOLDER DESCRIBING TOPOGRAPHIC MAPS AND SYMBOLS IS AVAILABLE ON REQUEST

USGS  
Historical File  
Topographic Division  
This area also covered by 1:24,000 scale maps  
of West York 1954, Abbottstown 1953, Hanover 1954,  
and Seven Valleys 1953 7.5-minute quadrangles

Polyconic projection.  
10,000-foot grid based on Pennsylvania (South)  
rectangular coordinate system  
1000-meter Universal Transverse Mercator grid ticks,  
zone 18, shown in blue

U.S.G.S.  
FILE COPY  
TOPOGRAPHIC DIVISION

HANOVER, PA.  
N3945—W7645/15

1920

NOV 10 1959