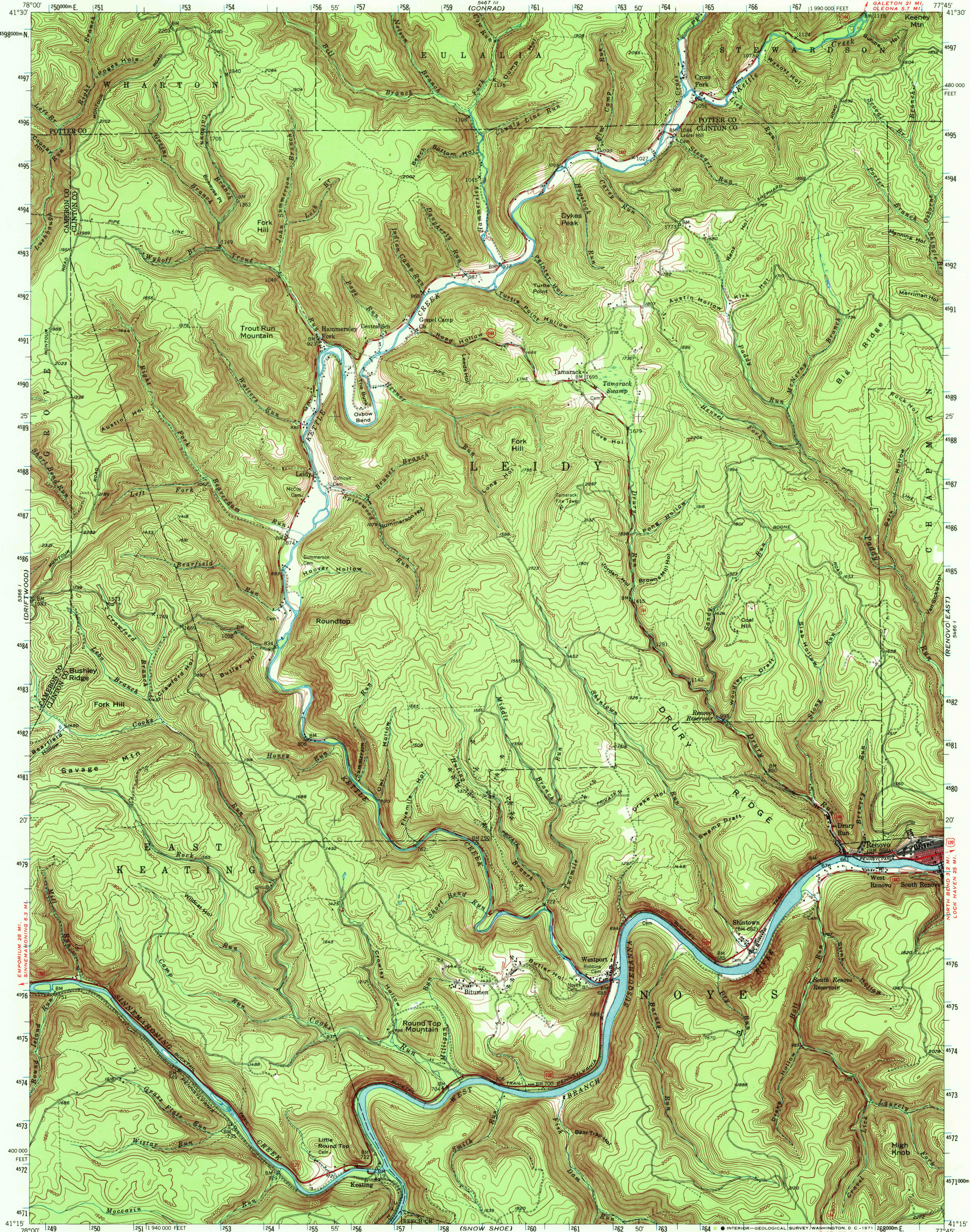


UNITED STATES
DEPARTMENT OF THE INTERIOR
GEOLOGICAL SURVEY

STATE OF PENNSYLVANIA
DEPARTMENT OF INTERNAL AFFAIRS
TOPOGRAPHIC AND GEOLOGIC SURVEY
(CONRAD)

RENOVO WEST QUADRANGLE
PENNSYLVANIA
15 MINUTE SERIES (TOPOGRAPHIC)



Mapped, edited, and published by the Geological Survey

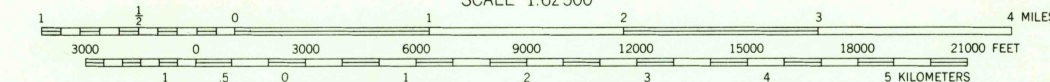
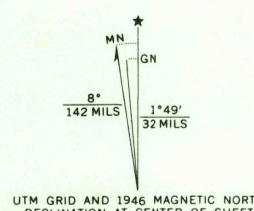
Control by USGS and USC&GS

Topography from aerial photographs by multiplex methods
Aerial photographs taken 1944. Field check 1946

Polyconic projection. 1927 North American datum
10,000-foot grid based on Pennsylvania coordinate system,
north zone

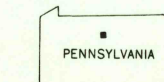
Red tint indicates area in which only
landmark buildings are shown

1000-meter Universal Transverse Mercator grid ticks,
zone 18, shown in blue



CONTOUR INTERVAL 40 FEET
DATUM IS MEAN SEA LEVEL

THIS MAP COMPLIES WITH NATIONAL MAP ACCURACY STANDARDS
FOR SALE BY U.S. GEOLOGICAL SURVEY, WASHINGTON, D.C. 20242
A FOLDER DESCRIBING TOPOGRAPHIC MAPS AND SYMBOLS IS AVAILABLE ON REQUEST
THIS MAP IS AVAILABLE WITH OR WITHOUT SHADED RELIEF OVERPRINT



QUADRANGLE LOCATION
HISTORICAL FILE
TOPOGRAPHIC DIVISION

Heavy-duty ——— Light-duty ———
Medium-duty ——— Unimproved dirt ———
U.S. Route ——— State Route ———

This area is also covered by 1:24,000 scale maps of
Tamarack, Hamersley Fork, Keating, and
Renovo West 7.5 minute quadrangles

RENOVO WEST, PA.
N4115-W7745/15

1946
AMS 5466 IV—SERIES V731

NOV 18 1971