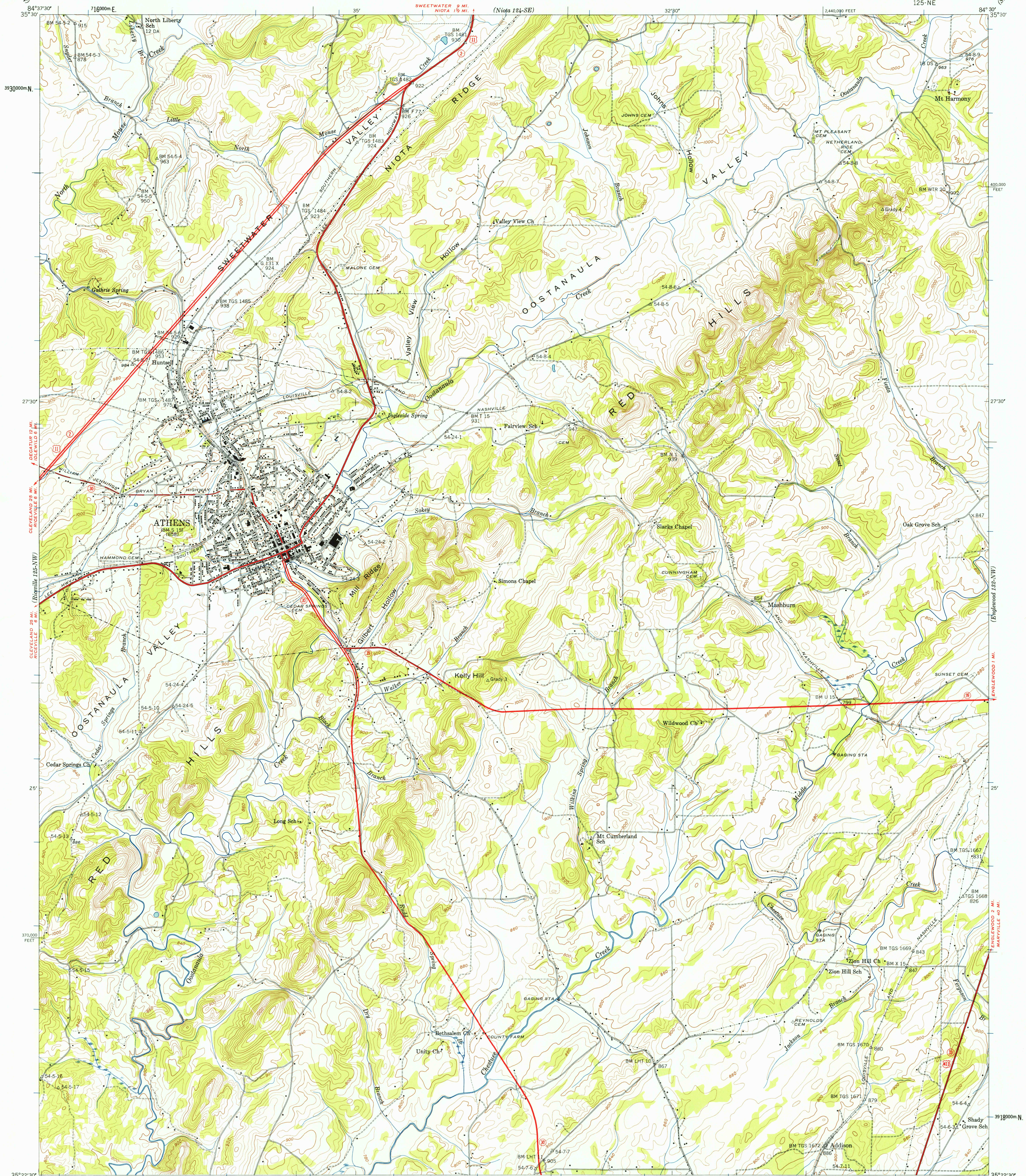


UNITED STATES  
DEPARTMENT OF THE INTERIOR  
GEOLOGICAL SURVEY

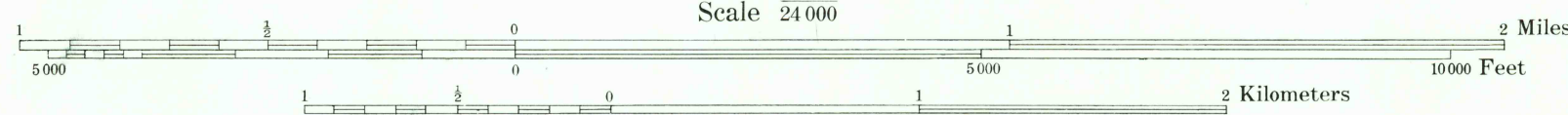
UNITED STATES  
TENNESSEE VALLEY AUTHORITY  
MAPS AND SURVEYS DIVISION

TENNESSEE  
(McMINN COUNTY)  
ATHENS QUADRANGLE  
125-NE



Basic Control by USC&GS, USGS, and TVA  
Topography by Geological Survey from aerial  
photographs by stereophotogrammetric methods  
Field examination by Tennessee Valley Authority, 1944

APPROXIMATE MEAN  
DECLINATION, 1944



Contour interval 20 feet  
Datum is mean sea level

FOR SALE BY U. S. GEOLOGICAL SURVEY, WASHINGTON 25, D. C.  
U. S. TENNESSEE VALLEY AUTHORITY, CHATTANOOGA OR KNOXVILLE, TENN.  
AND TENNESSEE DIVISION OF GEOLOGY, NASHVILLE, TENN.  
A FOLDER DESCRIBING TOPOGRAPHIC MAPS AND SYMBOLS IS AVAILABLE ON REQUEST

USGS  
HISTORICAL FILE  
TOPOGRAPHIC DIVISION

U.S.G.S.  
FILE COPY  
TOPOGRAPHIC DIVISION

ATHENS, TENN.  
125-NE  
N3522.5-W8430/7.5  
1944

APPROXIMATE MEAN  
DECLINATION, 1944