

(Transpiling 124-SW)
(Calloway 124-SW)
(Calloway 124-SW)

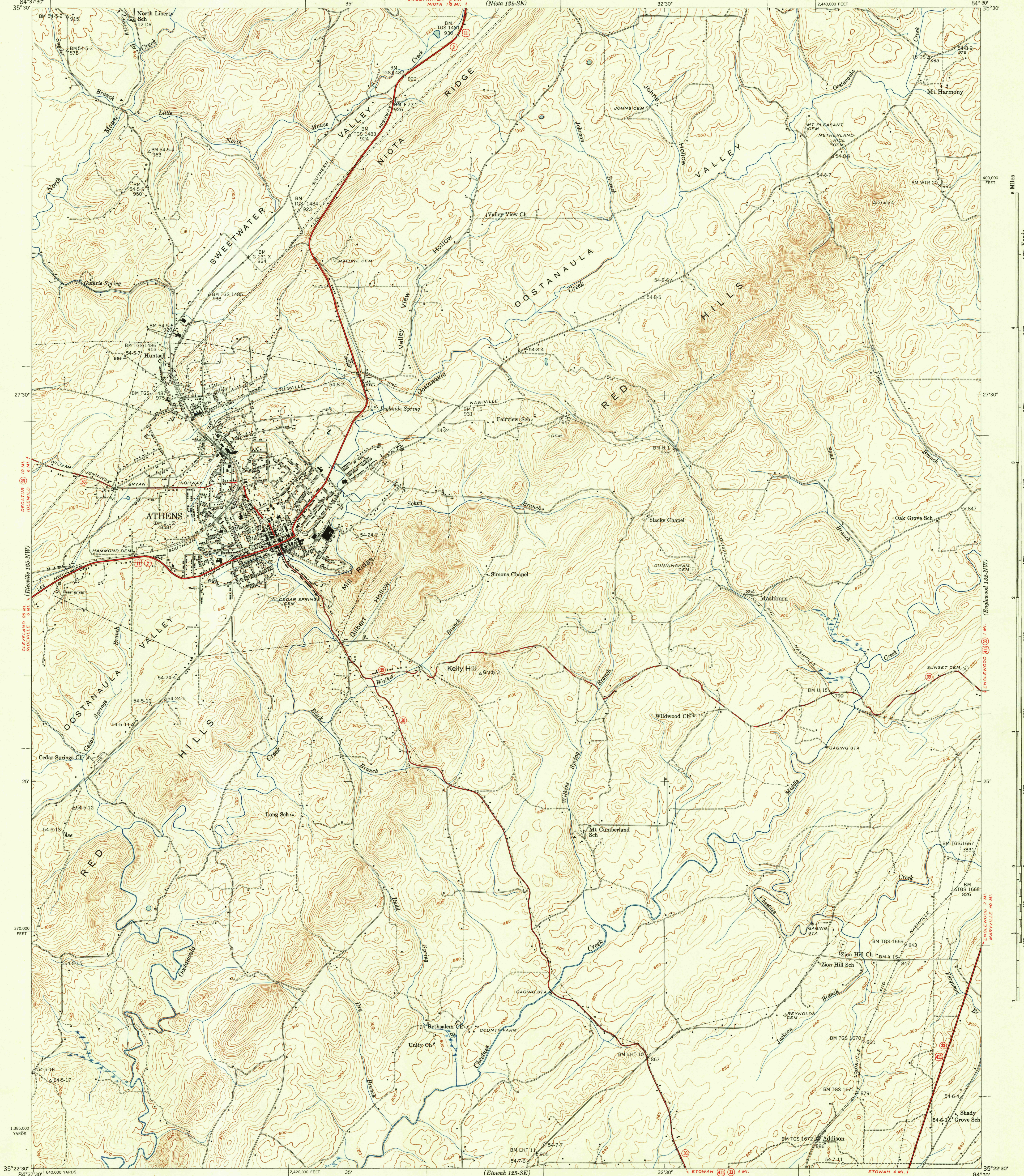
UNITED STATES
DEPARTMENT OF THE INTERIOR
GEOLOGICAL SURVEY

UNITED STATES
TENNESSEE VALLEY AUTHORITY
MAPS AND SURVEYS DIVISION

U.S.G.S.
FILE COPY
Transpiling and Editing

TENNESSEE
(McMINN COUNTY)
ATHENS QUADRANGLE
125-NE

(Sweetwater 124-SW)
(Englewood 125-NW)
(Englewood 125-NW)
(Etowah 125-SE)
(Meigs 124-SW)



Basic Control by USC&GS, USGS, and TVA
Topography by Geological Survey from aerial
photographs by stereophotogrammetric methods
Field examination by Tennessee Valley Authority, 1944
Maps distributed by the Geological Survey

TRUE NORTH
MAGNETIC NORTH
APPROXIMATE MEAN
DECLINATION, 1944

Scale 24000
0 1 2 Miles
0 1 2 Kilometers
0 1000 Feet
Contour interval 20 feet
Datum is mean sea level

U.S.G.S.
HISTORICAL FILE
TOPOGRAPHIC DIVISION

Polyconic projection. 1927 North American datum
10,000 foot grid based on Tennessee
rectangular coordinate system
5,000 yard grid based on U. S. zone system, B
ROUTES USUALLY TRAVELED
HARD, IMPERVIOUS SURFACES
OTHER SURFACE IMPROVEMENTS
US ROUTE STATE ROUTE
ATHENS, TENN.
125-NE
Edition of 1944
N3522.5-W8430/7.5