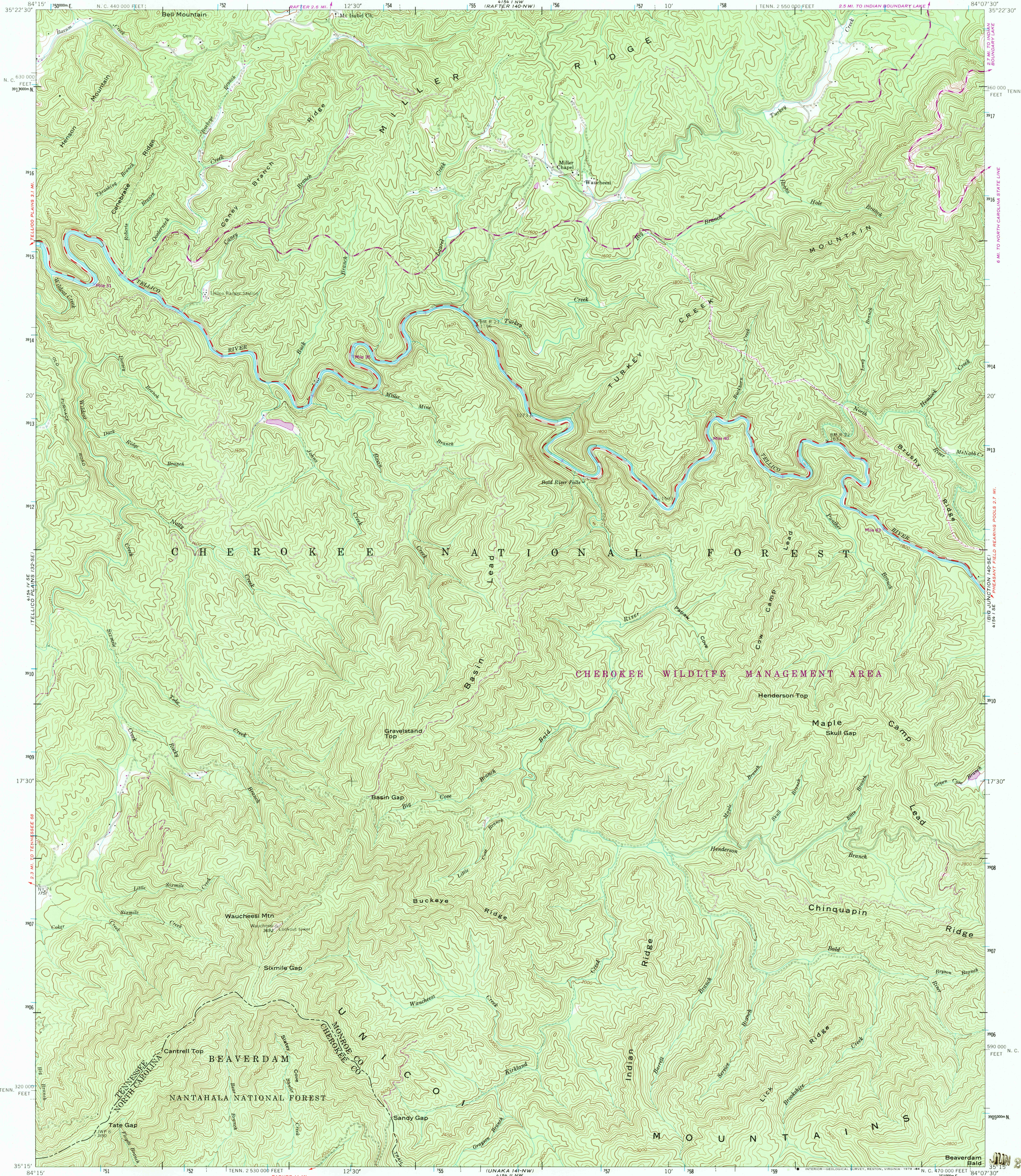


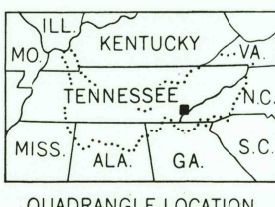
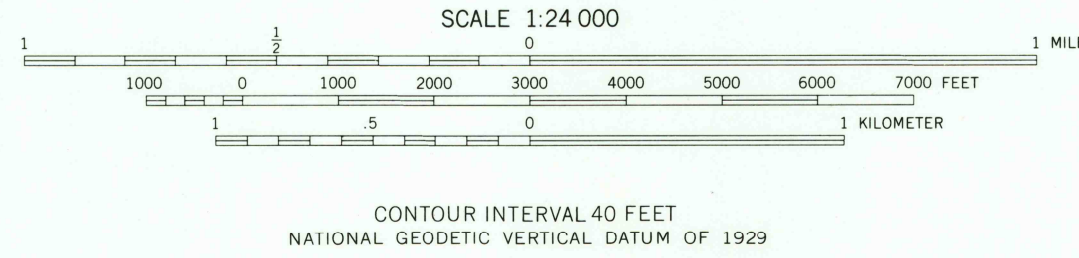
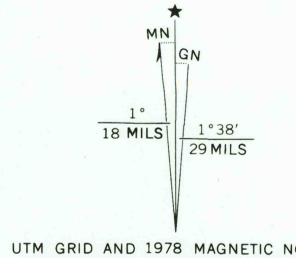
UNITED STATES
DEPARTMENT OF THE INTERIOR
GEOLOGICAL SURVEY

UNITED STATES
TENNESSEE VALLEY AUTHORITY
MAPPING SERVICES BRANCH

BALD RIVER FALLS QUADRANGLE
TENNESSEE-NORTH CAROLINA
7.5 MINUTE SERIES (TOPOGRAPHIC) 140-SW



Maped and edited by Tennessee Valley Authority
Published by the Geological Survey
Control by NOS/NOAA, USGS, and TVA
Topography by photogrammetric methods using aerial
photographs taken 1953. Map field checked by TVA, 1957
Polyconic projection, 1927 North American datum
10,000-foot grid based on Tennessee and
North Carolina rectangular coordinate systems
1000 meter Universal Transverse Mercator Grid ticks,
Zone 16, shown in blue
Revisions shown in purple and recombination of woodland
areas compiled by the Tennessee Valley Authority from aerial
photographs taken 1976. This information not field checked
Map edited 1978.



ROAD CLASSIFICATION
Heavy-duty Poor motor road
Medium-duty Wagon and jeep track
Light-duty Foot trail
U. S. Route State Route

BALD RIVER FALLS, TENN.-N.C.
N3515-W8407.5/7.5
1957
PHOTOREVISED 1978
AMS 4154 I SW-SERIES V841

RETURN TO:
USGS MID HISTORICAL MAP ARCHIVES