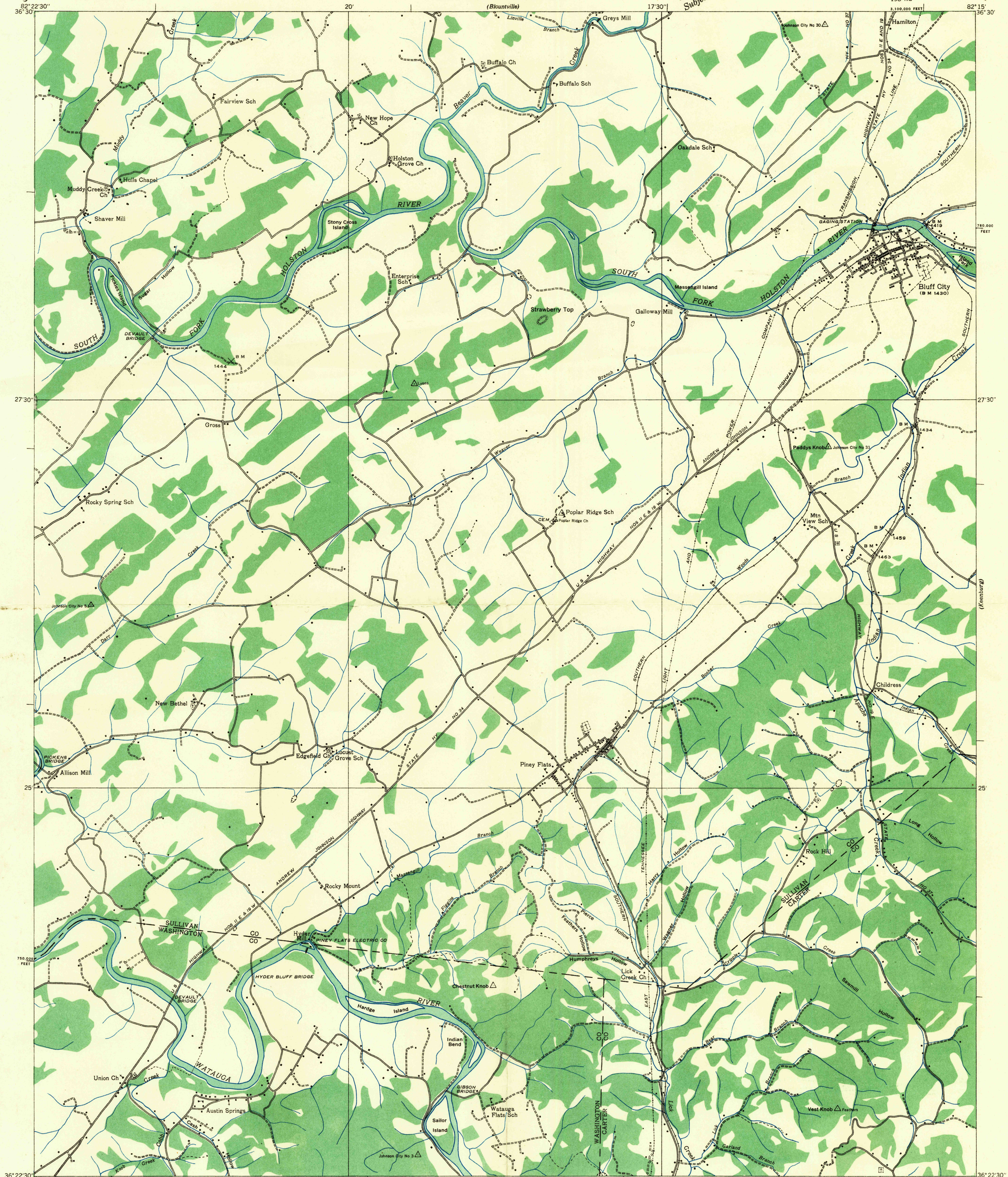


DEPARTMENT OF THE INTERIOR  
U. S. GEOLOGICAL SURVEY

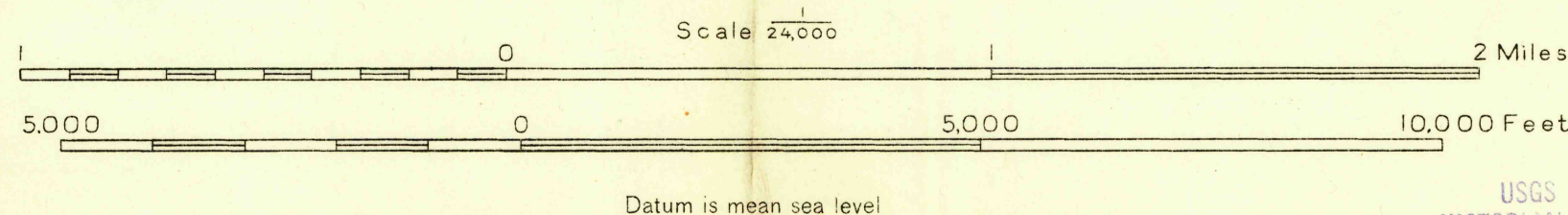
TENNESSEE VALLEY AUTHORITY  
ARTHUR E. MORGAN, CHAIRMAN AND CHIEF ENGINEER  
CARL A. BOCK, ASSISTANT CHIEF ENGINEER

TENNESSEE  
BLUFF CITY QUADRANGLE  
198-NE

Advance sheet  
Subject to correction



Albert Pike, Division Engineer  
Compiled by U. S. Geological Survey from aerial photographs  
Control by U. S. Geological Survey and U. S. Coast and Geodetic Survey  
Field examination in 1935



Polyconic projection. 1927 North American datum  
10,000 foot grid based on Tennessee  
rectangular coordinate system

BLUFF CITY, TENN.  
198-NE

USGS  
HISTORICAL FILE  
TOPOGRAPHIC DIVISION