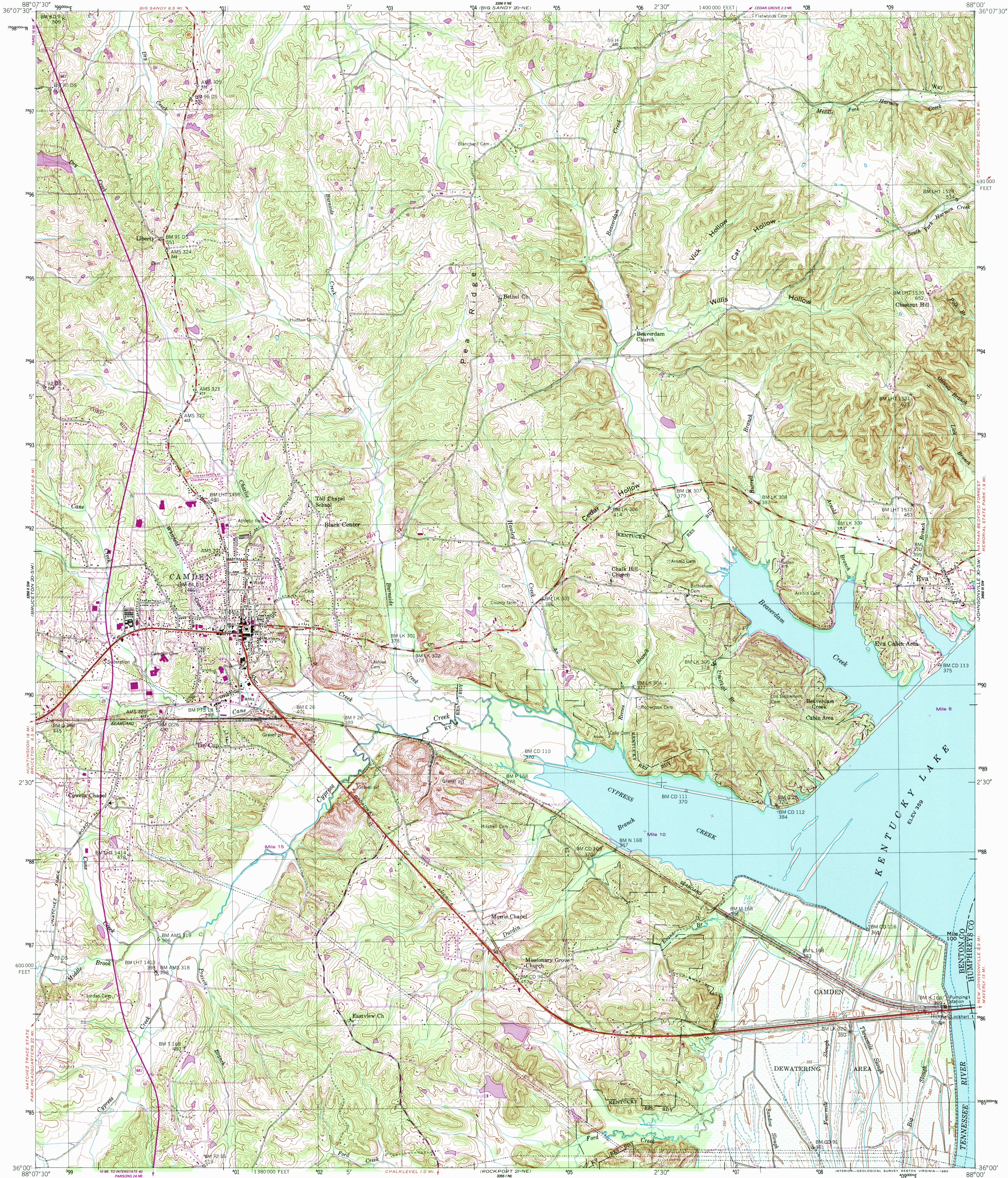


UNITED STATES  
DEPARTMENT OF THE INTERIOR  
GEOLOGICAL SURVEY

UNITED STATES  
TENNESSEE VALLEY AUTHORITY  
MAPPING SERVICES BRANCH

CAMDEN QUADRANGLE  
TENNESSEE  
7.5 MINUTE SERIES (TOPOGRAPHIC) 20-SE



Mapped and edited by Tennessee Valley Authority  
Published by the Geological Survey

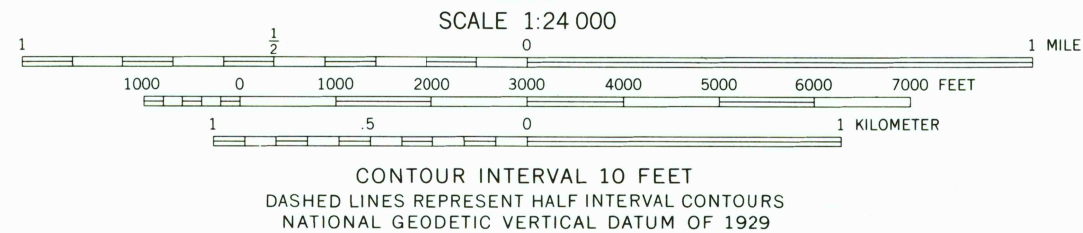
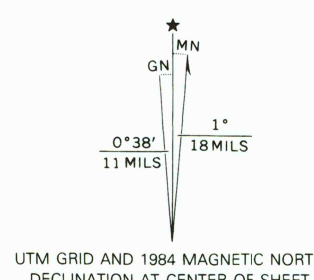
Control by NOS/NOAA, USGS, and TVA

Topography by USGS and TVA by planetable surveys and  
photogrammetric methods from aerial photographs taken 1947,  
1948, and 1950. Field checked by TVA, 1950.

Polycyclic projection, 10,000-foot grid ticks based on Tennessee  
coordinate system, 1,000-meter Universal Transverse Mercator  
grid, zone 16, 1927 North American Datum  
To place on the predicted North American Datum 1983  
move the projection lines 5 meters south and  
3 meters east as shown by dashed corner ticks

Revisions shown in purple and woodland compiled by the  
Tennessee Valley Authority from aerial photographs  
taken 1980 and other sources. This information not  
field checked. Map edited 1984

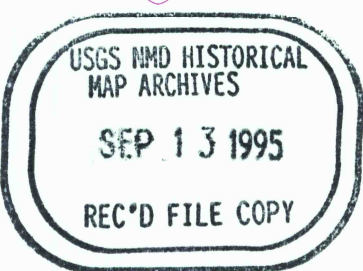
Fine purple dashed lines indicate selected fence and field  
lines where generally visible on aerial photographs



THIS MAP COMPLIES WITH NATIONAL MAP ACCURACY STANDARDS  
FOR SALE BY U. S. GEOLOGICAL SURVEY, RESTON, VIRGINIA 22092,  
TENNESSEE DEPARTMENT OF CONSERVATION, DIVISION OF GEOLOGY, NASHVILLE, TENN. 37219  
AND U. S. TENNESSEE VALLEY AUTHORITY, CHATTANOOGA, TENN. 37401 OR KNOXVILLE, TENN. 37902  
A FOLDER DESCRIBING TOPOGRAPHIC MAPS AND SYMBOLS IS AVAILABLE ON REQUEST



ROAD CLASSIFICATION  
Primary highway, all weather, improved surface  
Secondary highway, all weather, hard surface  
Light duty road, all weather, improved surface  
Unimproved road, fair or dry weather  
Interstate Route  
U. S. Route  
State Route



CAMDEN, TENN.  
36088-A1-TF-024

1950  
PHOTOREVISED 1984  
DMA 3356 II SE-SERIES V841

