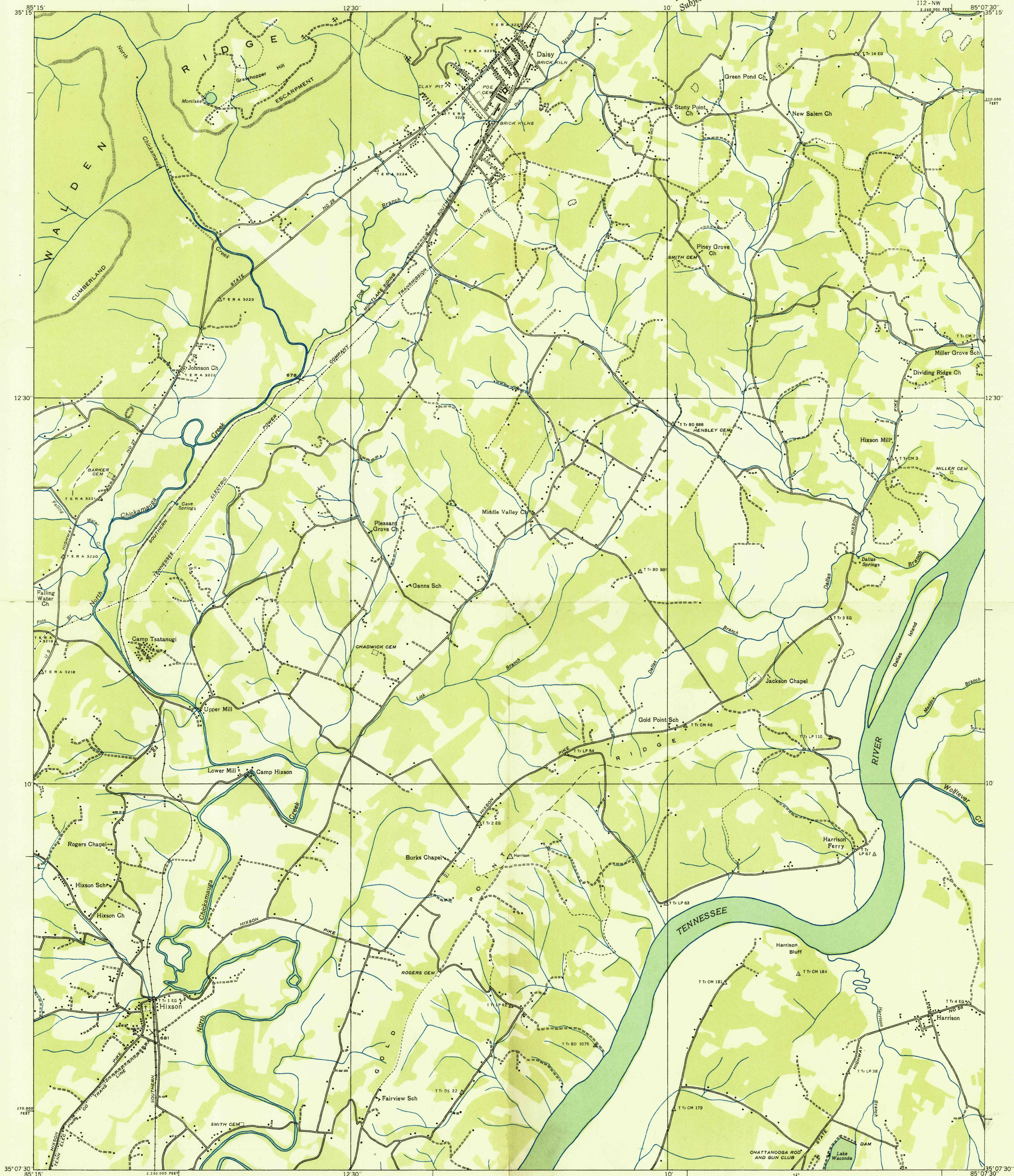
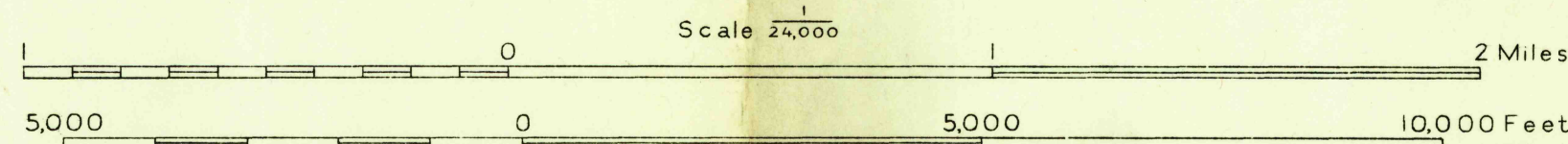


Advance sheet
Subject to correction



Albert Pike, Division Engineer
Compiled by U. S. Geological Survey from aerial photographs
Control by U. S. Geological Survey, U. S. Coast and Geodetic Survey,
Tenn. Em. Rel. Adm. and Tennessee Valley Authority
Field examination in 1935



Datum is mean sea level

USGS
HISTORICAL FILE
TOPOGRAPHIC DIVISION

Polyconic projection. 1927 North American datum
10,000 foot grid based on Tennessee
rectangular coordinate system
TRUE NORTH
MAGNETIC NORTH
APPROXIMATE MEAN
DECLINATION, 1935
Ridge line
Trail
Sink
Rim Rock

DAISY, TENN.
112-NW