



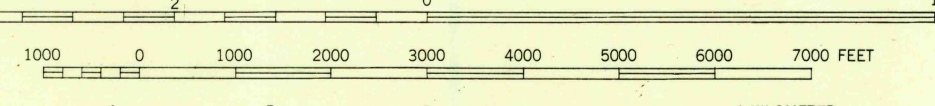
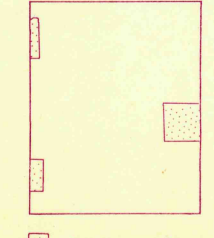
UNITED STATES
DEPARTMENT OF THE INTERIOR
GEOLOGICAL SURVEY

UNITED STATES
TENNESSEE VALLEY AUTHORITY
MAPS AND SURVEYS BRANCH

ELKTON QUADRANGLE
TENNESSEE-GILES CO.
7.5 MINUTE SERIES (TOPOGRAPHIC) 66-SW

Mapped and edited by Tennessee Valley Authority
Published by the Geological Survey
Control by US&GS, USGS, USED and TVA
Topography by USGS and TVA by multiplex methods from aerial
photographs taken 1944. Field examination by TVA, 1948
Polyconic projection, 1927 North American datum
10,000-foot grid based on Tennessee rectangular
coordinate system
1000-meter Universal Transverse Mercator grid ticks,
zone 16, shown in purple
Grid declination 0°02', 1 mil East
Revisions in purple compiled by TVA, November 1966
from March 1966 photography

TRUE NORTH
MAGNETIC NORTH
APPROXIMATE MEAN
DECLINATION 1948
1°02'



CONTOUR INTERVAL 20 FEET
DASHED LINES REPRESENT HALF-INTERVAL CONTOURS
DATUM IS MEAN SEA LEVEL

THIS MAP COMPLIES WITH NATIONAL MAP ACCURACY STANDARDS
FOR SALE BY U. S. GEOLOGICAL SURVEY, WASHINGTON 25, D. C. 20242
AND BY U. S. TENNESSEE VALLEY AUTHORITY, CHATTANOOGA OR KNOXVILLE, TENN.
A FOLDER DESCRIBING TOPOGRAPHIC MAPS AND SYMBOLS IS AVAILABLE ON REQUEST 37401 OR 37902

LEGEND

- Fence and field line
 - Stream
 - Pond and dam
 - Mine or quarry
 - Woodland (formerly clearing)
 - Clearing (formerly wood)
 - General deletion
 - Heavy-duty road
 - Medium-duty road
 - Light-duty road
 - Poor motor road
 - Wagon and jeep track
 - Foot trail
- USGS
Historical File
Topographic Division
- FILE COPY
- MAP INFORMATION OFFICE
GEOLOGICAL SURVEY
- QUADRANGLE LOCATION
- ROUTES USUALLY TRAVELED
HARD, IMPROVED SURFACES
OTHER SURFACE IMPROVEMENTS
U. S. ROUTE
Interstate Route
STATE ROUTE
- ELKTON, TENN.
N3500-W6552.5/7.5
PRINTED 1951
AMS 3654 III SW SERIES V841