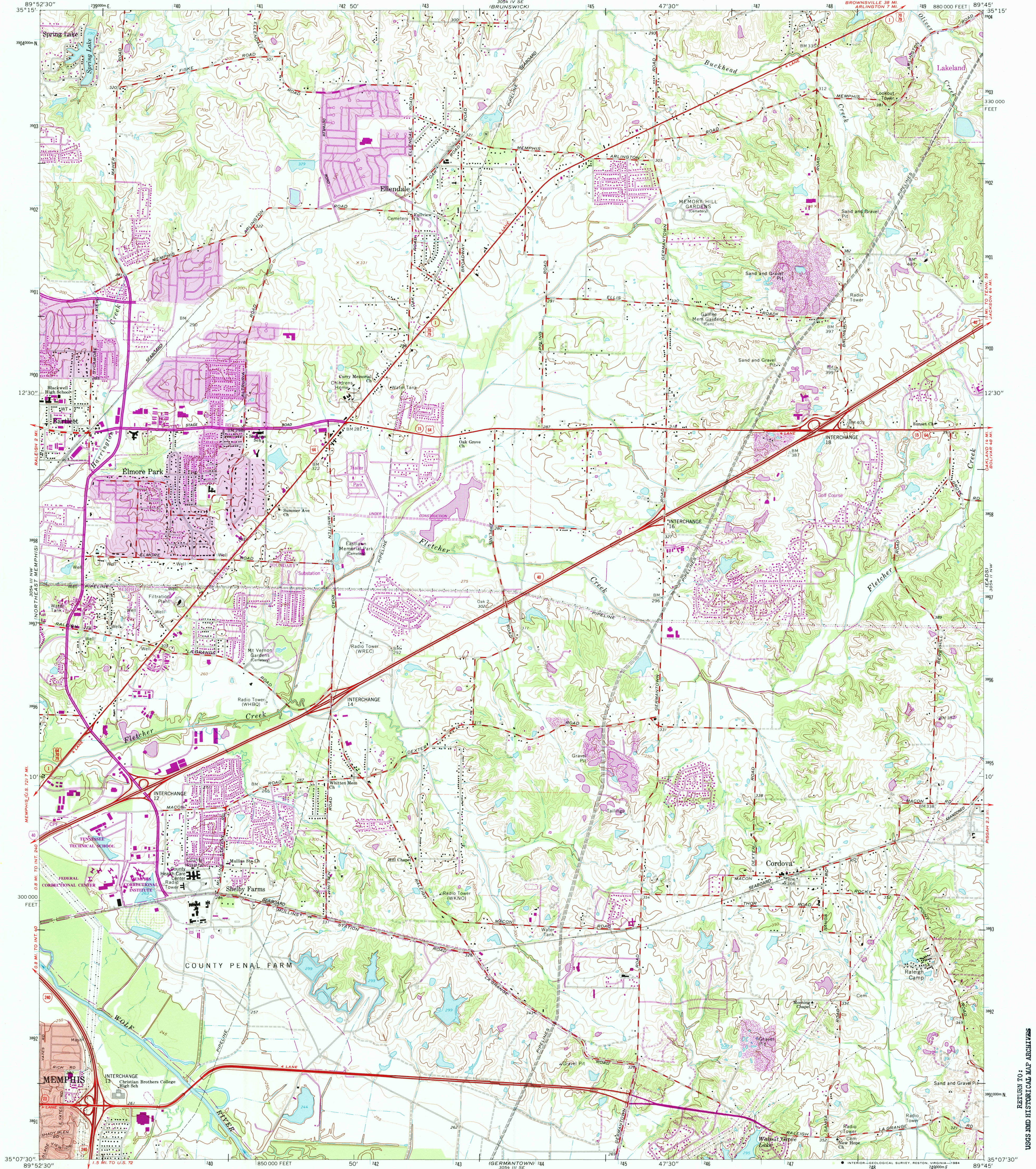


UNITED STATES  
DEPARTMENT OF THE INTERIOR  
GEOLOGICAL SURVEY

ELLENDALE QUADRANGLE  
TENNESSEE-SHELBY CO.  
7.5 MINUTE SERIES (TOPOGRAPHIC)  
NE 1/4 BARTLETT 15' QUADRANGLE



Mapped, edited, and published by the Geological Survey

Control by USGS, NOS/NOAA, and USCE

Topography by photogrammetric methods from aerial photographs taken 1963. Field checked 1965

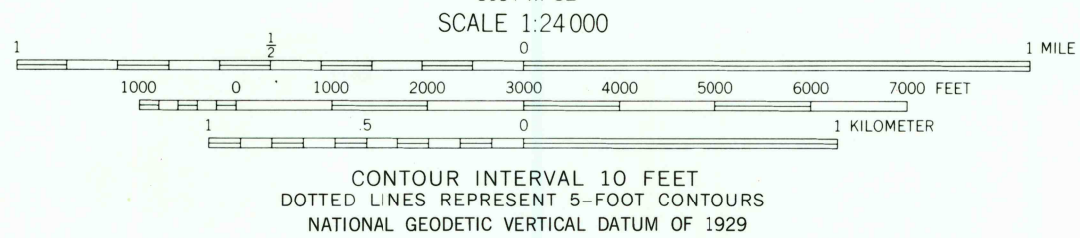
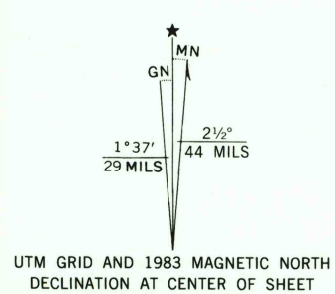
Polyconic projection. 10,000-foot grid ticks based on Tennessee coordinate system  
1000-meter Universal Transverse Mercator grid ticks, zone 16, shown in blue  
1927 North American Datum

To place on the predicted North American Datum 1983  
move the projection lines 7 meters south and  
7 meters east as shown by dashed corner ticks

Fine red dashed lines indicate selected fence and field lines where  
generally visible on aerial photographs. This information is unchecked

Red tint indicates area in which only landmark buildings are shown

There may be private inholdings within the boundaries of the National or State reservations shown on this map



THIS MAP COMPLIES WITH NATIONAL MAP ACCURACY STANDARDS  
FOR SALE BY U. S. GEOLOGICAL SURVEY, RESTON, VIRGINIA 22092,  
TENNESSEE DEPARTMENT OF CONSERVATION, DIVISION OF GEOLOGY, NASHVILLE, TENN. 37219  
A FOLDER DESCRIBING TOPOGRAPHIC MAPS AND SYMBOLS IS AVAILABLE ON REQUEST



Revisions shown in purple and woodland compiled from aerial photographs taken 1980 and other sources. This information not field checked. Map edited 1983  
Purple tint indicates extensions of urban areas

ROAD CLASSIFICATION	
Heavy-duty	Light-duty
Medium-duty	Unimproved dirt
Interstate Route	U. S. Route
	State Route

ELLEDALE, TENN.  
NE 1/4 BARTLETT 15' QUADRANGLE  
35089-87-TF-024

1965  
PHOTOREVISED 1983  
DMA 3054 III NE-SERIES V841

RETURN TO:  
USGS AND HISTORICAL MAP ARCHIVES