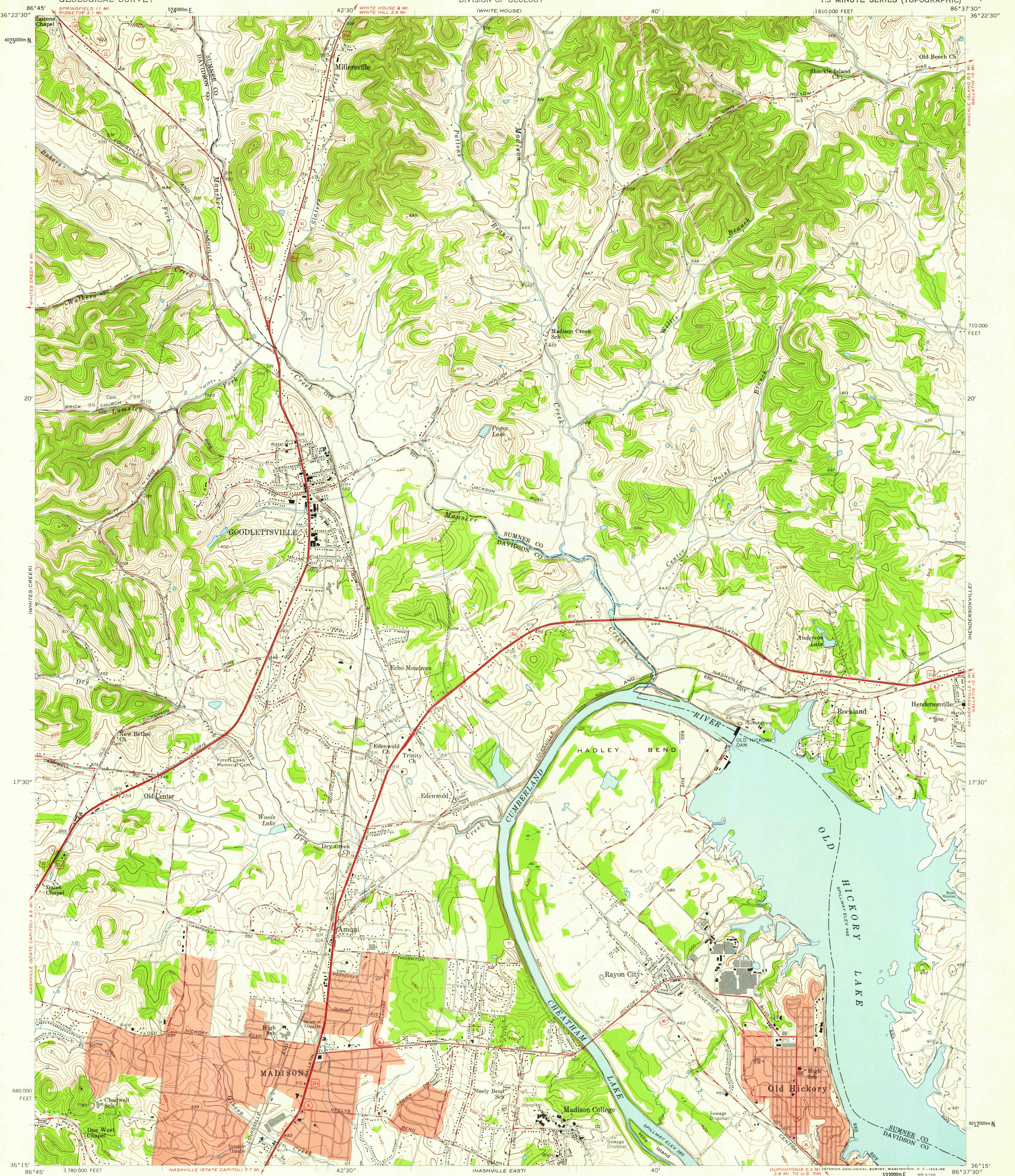


UNITED STATES  
DEPARTMENT OF THE INTERIOR  
GEOLOGICAL SURVEY

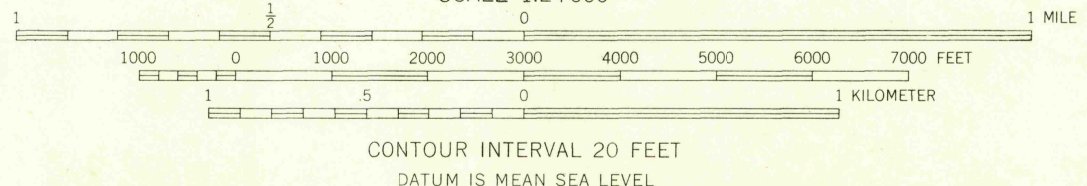
STATE OF TENNESSEE  
DEPARTMENT OF CONSERVATION  
DIVISION OF GEOLOGY

GOODLETTSVILLE QUADRANGLE  
TENNESSEE  
7.5 MINUTE SERIES (TOPOGRAPHIC)



Mapped, edited, and published by the Geological Survey  
Control by USGS, USC&GS, USCE, and Tennessee Geodetic Survey  
Topography from aerial photographs by multiplex methods  
Aerial photographs taken 1950. Field check 1952  
Culture revised by photogrammetric methods from aerial  
photographs taken 1957. Field check 1957  
Polyconic projection. 1927 North American datum  
10,000-foot grid based on Tennessee coordinate system  
1000-meter Universal Transverse Mercator grid ticks,  
zone 16, shown in blue  
Fine red dashed lines indicate selected fence and field lines  
visible on aerial photographs. This information is unchecked  
Red tint indicates areas in which only  
landmark buildings are shown  
Unchecked elevations are shown in brown

TRUE NORTH  
MAGNETIC NORTH  
APPROXIMATE MEAN  
DECLINATION, 1957



THIS MAP COMPLIES WITH NATIONAL MAP ACCURACY STANDARDS  
FOR SALE BY U. S. GEOLOGICAL SURVEY, WASHINGTON 25, D. C.  
AND TENNESSEE DIVISION OF GEOLOGY, NASHVILLE, TENN.  
A FOLDER DESCRIBING TOPOGRAPHIC MAPS AND SYMBOLS IS AVAILABLE ON REQUEST

USGS  
HISTORICAL FILE  
TOPOGRAPHIC DIVISION

ROAD CLASSIFICATION  
Heavy-duty ——— Light-duty ———  
Medium-duty ——— Unimproved dirt ———  
U.S. Route ——— State Route ———

U.S.G.S.  
FILE COPY  
TOPOGRAPHIC DIVISION

GOODLETTSVILLE, TENN.  
N3615—W8637.5/7.5  
1957

1429 1.5 1955

2965