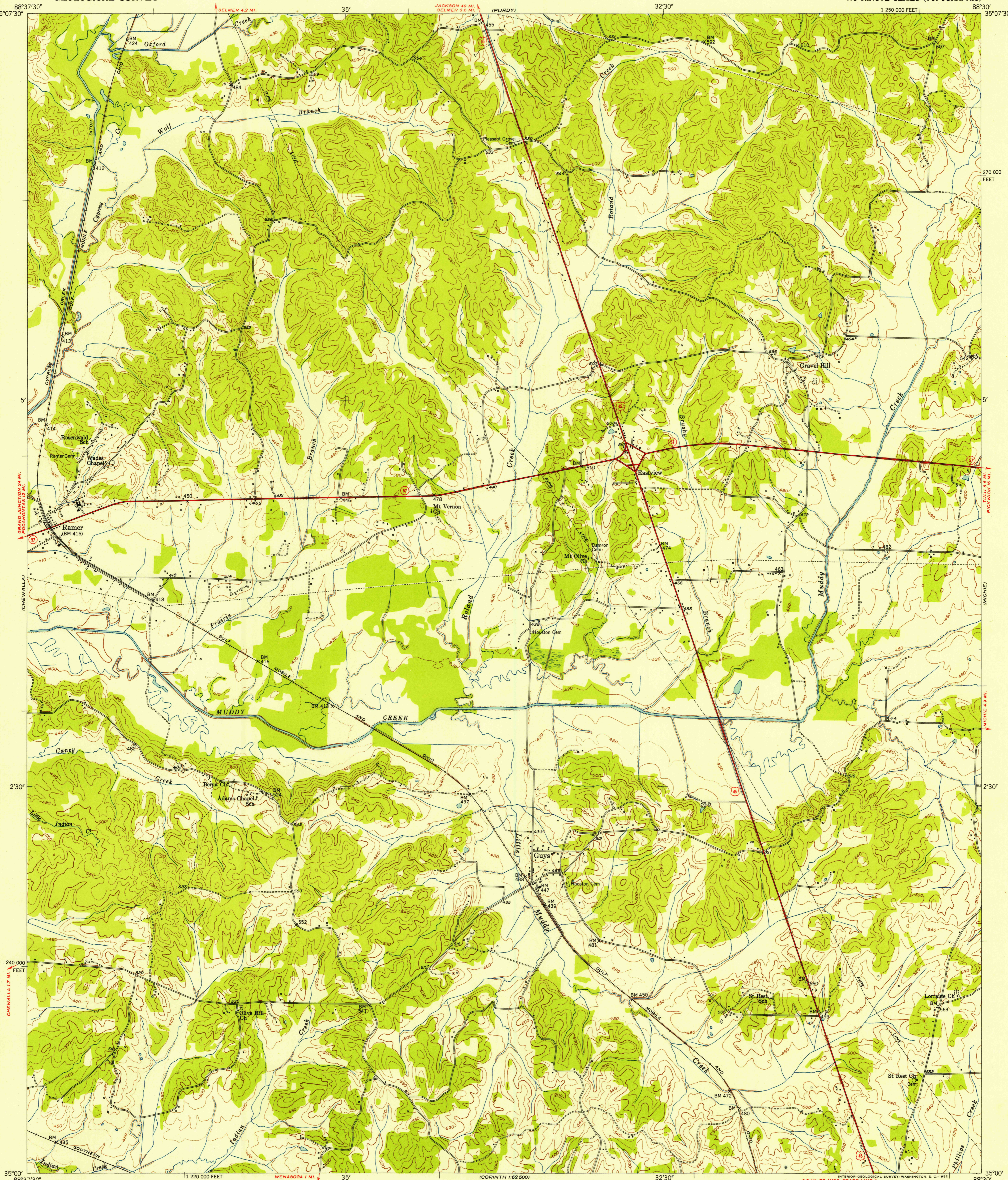


UNITED STATES
DEPARTMENT OF THE INTERIOR
GEOLOGICAL SURVEY

U. S. G. S.
FILE COPY
Inspection and Editing

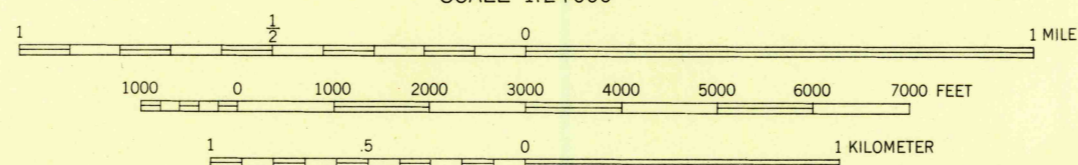
GUYS QUADRANGLE
TENNESSEE-McNAIRY CO.
7.5 MINUTE SERIES (TOPOGRAPHIC)

1:250,000 FEET



Mapped, edited, and published by the Geological Survey
Control by USGS, USC&GS, and TVA
Topography from aerial photographs by stereoplaniograph
Aerial photographs taken 1947. Field check 1951
Polyconic projection, 1927 North American datum
10,000-foot grid based on Tennessee coordinate system

TRUE NORTH
MAGNETIC NORTH
APPROXIMATE MEAN
DECLINATION, 1951



CONTOUR INTERVAL 20 FEET
DOTTED LINES REPRESENT HALF-INTERVAL CONTOURS
DATUM IS MEAN SEA LEVEL

THIS MAP COMPLIES WITH NATIONAL MAP ACCURACY STANDARDS
FOR SALE BY U. S. GEOLOGICAL SURVEY, WASHINGTON 25, D. C.
AND TENNESSEE DIVISION OF GEOLOGY, NASHVILLE, TENN.
A FOLDER DESCRIBING TOPOGRAPHIC MAPS AND SYMBOLS IS AVAILABLE ON REQUEST

ROAD CLASSIFICATION
Heavy-duty 2 LANE 16 LANE Light-duty
Medium-duty 4 LANE 16 LANE Unimproved dirt
U. S. Route State Route

U.S.G.S.
HISTORICAL FILE
TOPOGRAPHIC DIVISION
FILE COPY
Inspection and Editing

GUYS, TENN.
N3500-W8830/7.5

1951

SEP 10 1952

2100