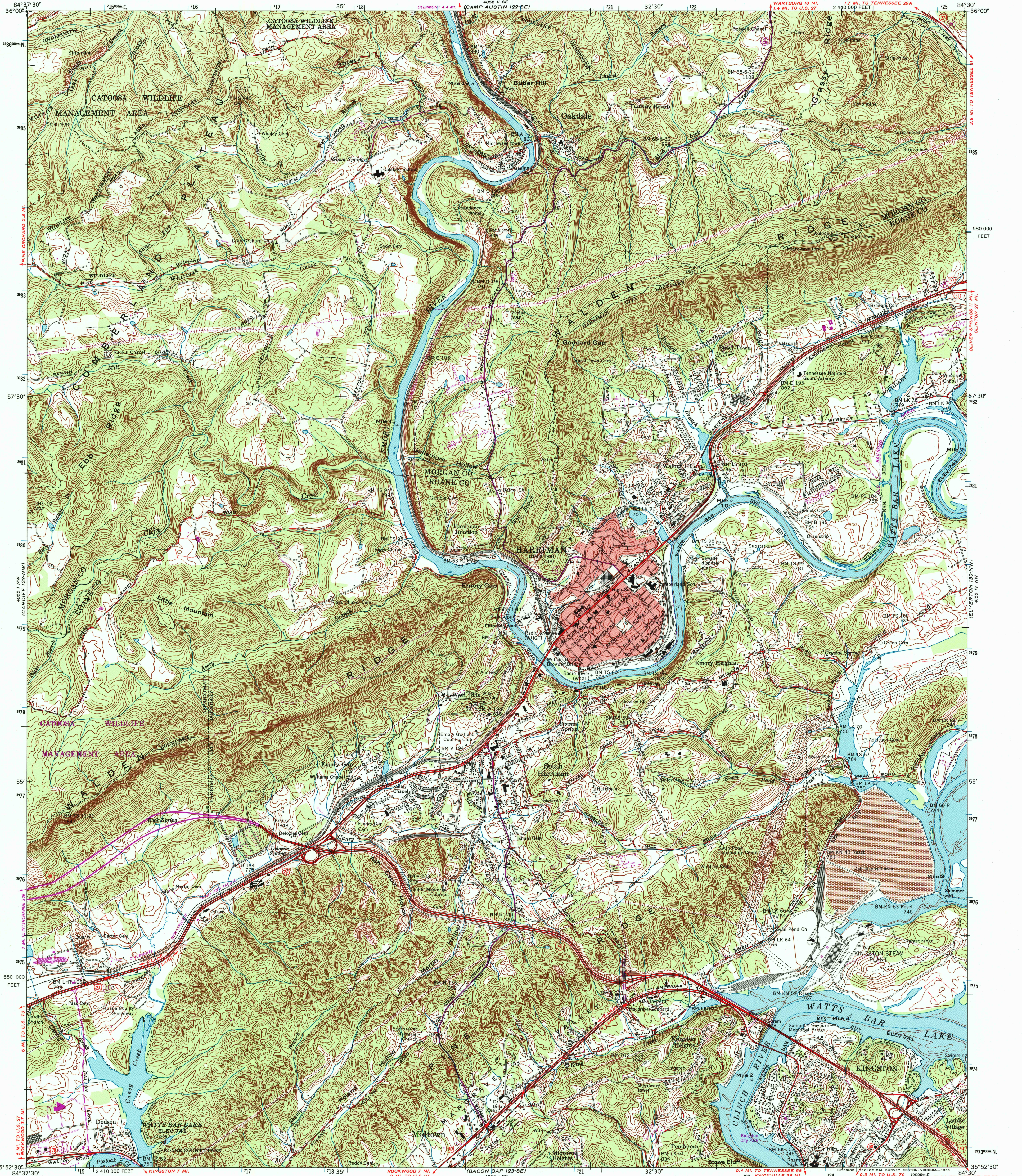


UNITED STATES
DEPARTMENT OF THE INTERIOR
GEOLOGICAL SURVEY

UNITED STATES
TENNESSEE VALLEY AUTHORITY
MAPPING SERVICES BRANCH

HARRIMAN QUADRANGLE
TENNESSEE
7.5 MINUTE SERIES (TOPOGRAPHIC) 123-NE



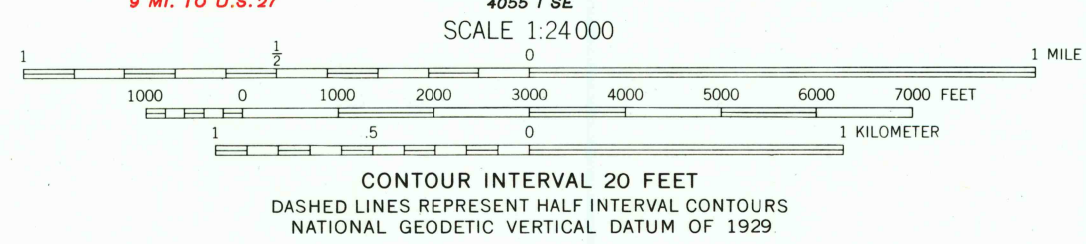
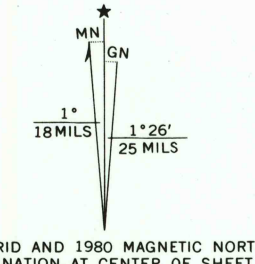
Mapped and edited by Tennessee Valley Authority
Published by the Geological Survey

Control by NOS/NOAA, USGS, WPA and TVA

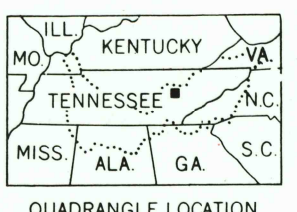
Revised by TVA in 1968 by photogrammetric methods using
aerial photographs taken 1967 and by reference to TVA-USGS
quadrangle dated 1953. Map field checked by TVA, 1968

Polyconic projection
10,000 foot grid based on Tennessee rectangular
coordinate system
1000 meter Universal Transverse Mercator grid ticks,
zone 16, shown in blue. 1927 North American Datum
To place on the predicted North American Datum 1983
move the projection lines 6 meters south and
6 meters west as shown by dashed corner ticks
Fine red dashed lines indicate selected fence and field lines
visible on aerial photographs. This information is unchecked

Red tint indicates areas in which only landmark buildings are shown
There may be private inholdings within the boundaries of
the National or State reservations shown on this map



THIS MAP COMPLIES WITH NATIONAL MAP ACCURACY STANDARDS
FOR SALE BY U.S. GEOLOGICAL SURVEY, RESTON, VIRGINIA 22092
TENNESSEE DIVISION OF GEOLOGY, NASHVILLE, TENN. 37219
U.S. TENNESSEE VALLEY AUTHORITY, CHATTANOOGA, TENN. 37401 OR KNOXVILLE, TENN. 37902
A FOLDER DESCRIBING TOPOGRAPHIC MAPS AND SYMBOLS IS AVAILABLE ON REQUEST



ROAD CLASSIFICATION
Primary highway, all weather, hard surface
Secondary highway, all weather, hard surface
Light-duty road, all weather, improved surface
Unimproved road, fair or dry weather
Interstate Route
U.S. Route
State Route

RECEIVED
JUN 30 1999
USGS NMD
HISTORICAL MAP ARCHIVES

HARRIMAN, TENN.
N3552.5-W8430/7.5
1968
PHOTOREVISED 1980
DMA 4055.1 NE-SERIES 5841

Revisions shown in purple and woodland compiled by
the Tennessee Valley Authority from aerial photographs
taken 1976 and other source data. This information
not field checked. Map edited 1980

