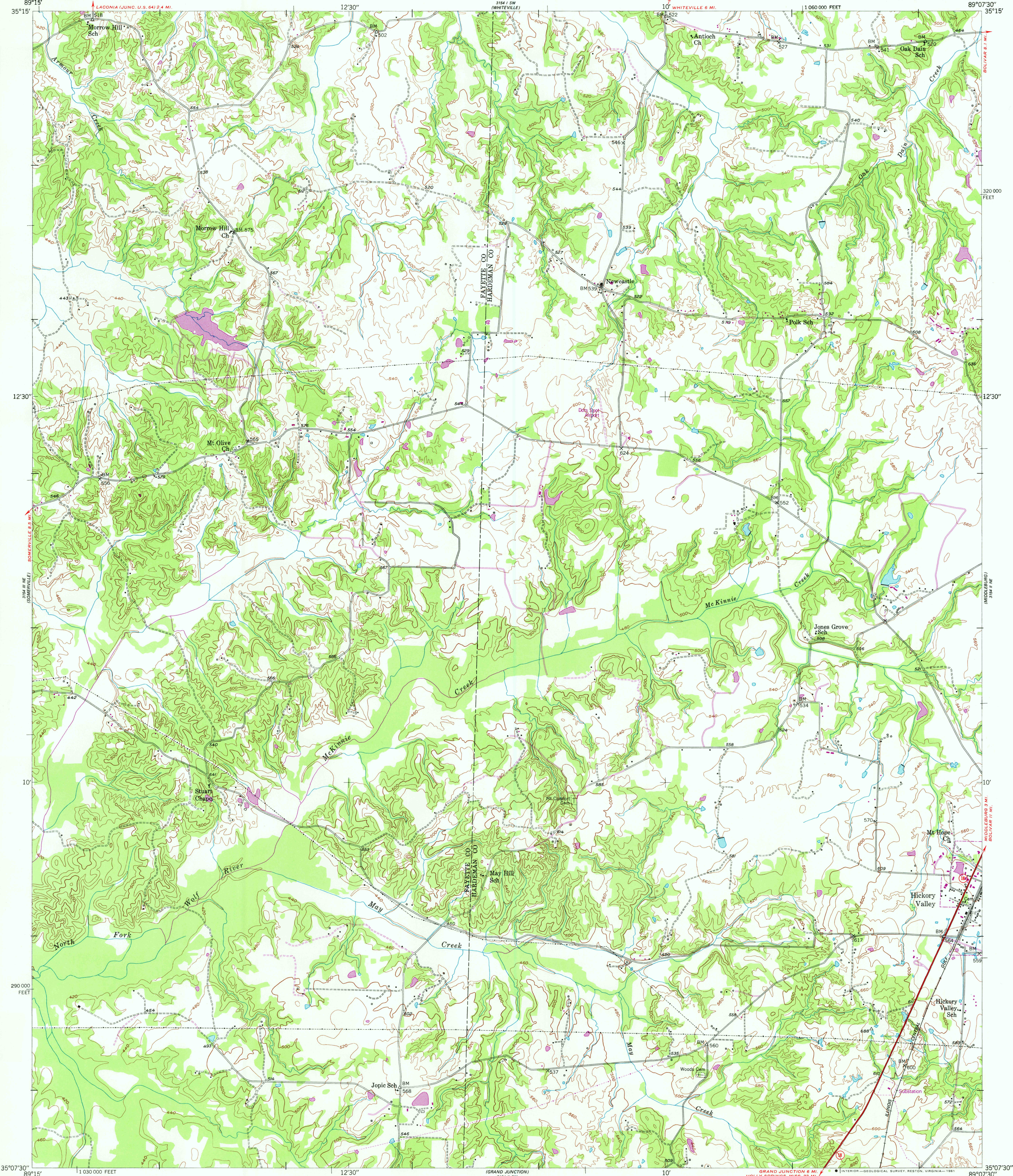
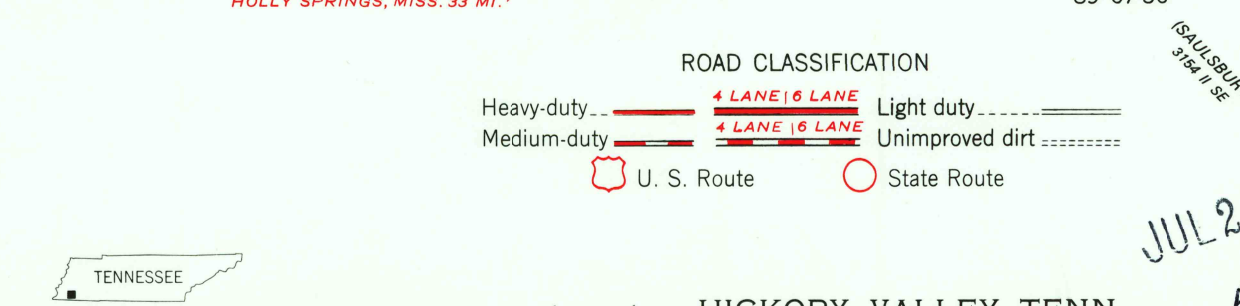
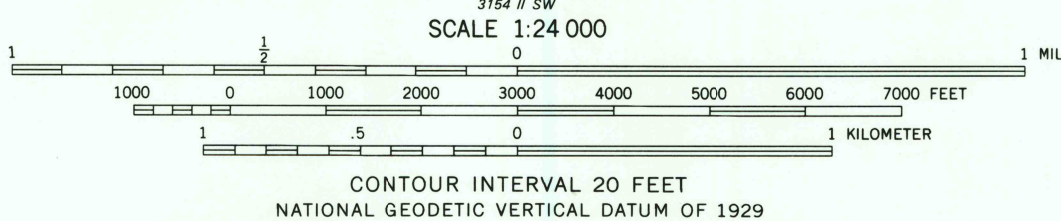
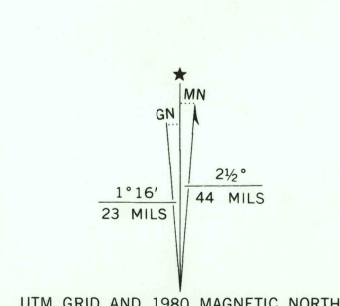


UNITED STATES
DEPARTMENT OF THE INTERIOR
GEOLOGICAL SURVEY

HICKORY VALLEY QUADRANGLE
TENNESSEE
7.5 MINUTE SERIES (TOPOGRAPHIC)



Mapped, edited, and published by the Geological Survey
Control by USGS and USC&GS
Topography from aerial photographs by stereoplanigraph
Aerial photographs taken 1947. Field Check 1950
Polyconic projection. 1927 North American datum
10,000-foot grid based on Tennessee coordinate system
Revisions shown in purple compiled from aerial photographs
taken 1978 and other source data. This information not
field checked. Map edited 1980



FOR SALE BY U. S. GEOLOGICAL SURVEY, RESTON, VIRGINIA 22092
AND TENNESSEE DIVISION OF GEOLOGY, NASHVILLE, TENN. 37219
A FOLDER DESCRIBING TOPOGRAPHIC MAPS AND SYMBOLS IS AVAILABLE ON REQUEST

USGS
HISTORICAL FILE
NATIONAL MAPPING DIVISION
HICKORY VALLEY, TENN.
N3507.5-W8907.5/7.5
1951
PHOTOREVISED 1980
DMA 3154 II NW-SERIES V841

JUL 20 1981
2350