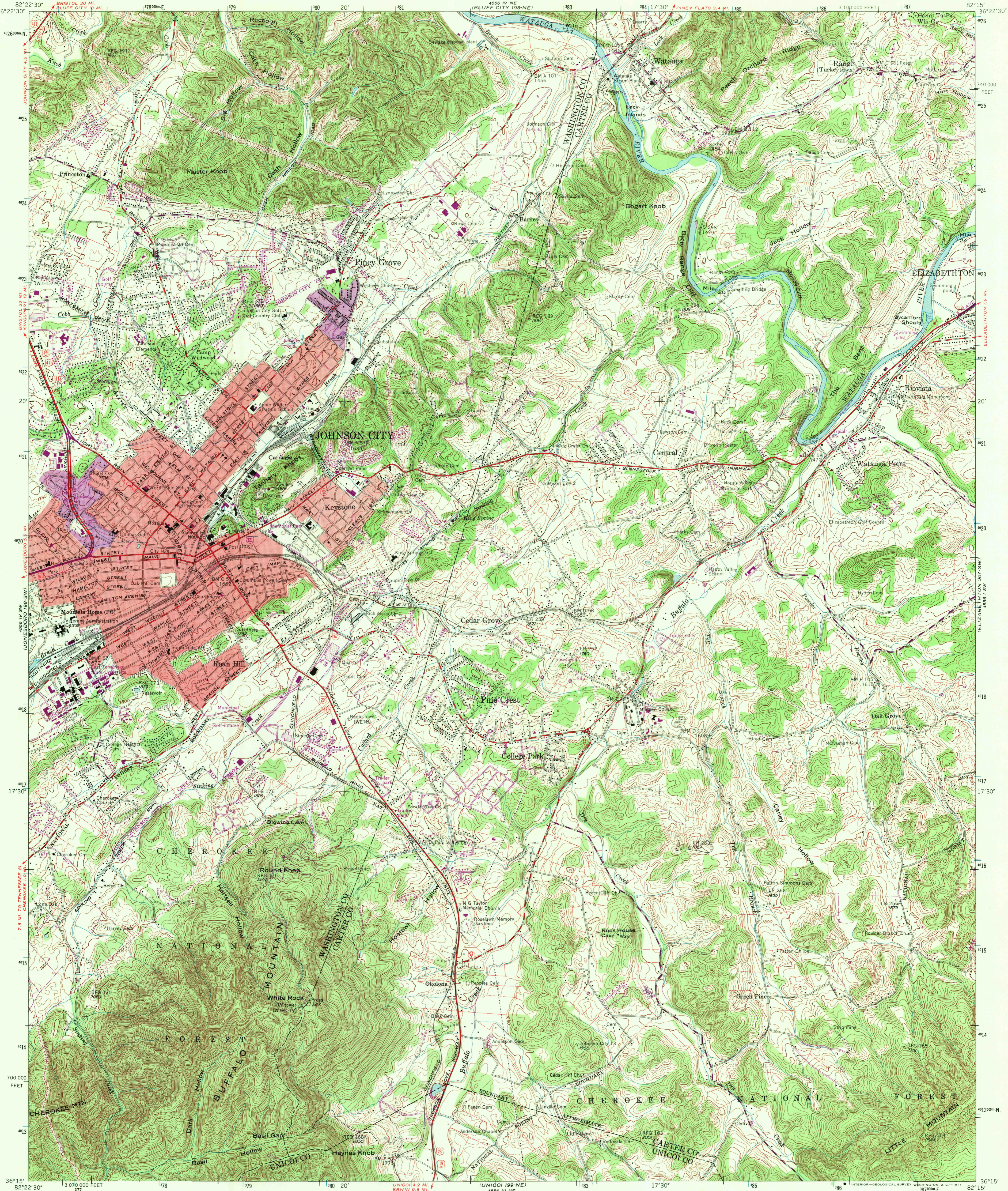


UNITED STATES  
DEPARTMENT OF THE INTERIOR  
GEOLOGICAL SURVEY

UNITED STATES  
TENNESSEE VALLEY AUTHORITY  
MAPS AND SURVEYS BRANCH

JOHNSON CITY QUADRANGLE  
TENNESSEE  
7.5 MINUTE SERIES (TOPOGRAPHIC) 198-SE



Maped and edited by Tennessee Valley Authority  
Published by the Geological Survey

Control by USC&GS, USGS, and TVA

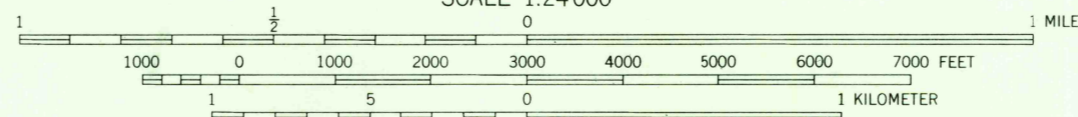
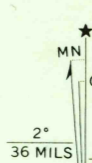
Revised by TVA in 1958 by photogrammetric methods using  
aerial photographs taken 1958 and by reference to TVA-USGS  
quadrangle dated 1940. Map field checked by TVA, 1959

Polyconic projection, 1927 North American datum  
10,000 foot grid based on Tennessee rectangular  
coordinate system  
1000 meter Universal Transverse Mercator Grid ticks,  
Zone 17, shown in blue

Red tint indicates areas in which only  
landmark buildings are shown

Fine red dashed lines indicate selected fence and field lines  
visible on aerial photographs. This information is unchecked

Revisions shown in purple and recompilation  
of woodland areas compiled by the Tennessee  
Valley Authority from aerial photographs taken  
1968. This information not field checked  
Purple tint indicates extension of urban areas



THIS MAP COMPLIES WITH NATIONAL MAP ACCURACY STANDARDS

FOR SALE BY U.S. GEOLOGICAL SURVEY, WASHINGTON, D.C. 20242,  
TENNESSEE DIVISION OF GEOLOGY, NASHVILLE, TENN. 37219,  
U.S. TENNESSEE VALLEY AUTHORITY, CHATTANOOGA, TENN. 37401 OR KNOXVILLE, TENN. 37902.  
A FOLDER DESCRIBING TOPOGRAPHIC MAPS AND SYMBOLS IS AVAILABLE ON REQUEST



QUADRANGLE LOCATION

U.S.G.S.  
FILE COPY  
TOPOGRAPHIC DIVISION

ROAD CLASSIFICATION

Heavy-duty ..... Peer motor road  
Medium-duty ..... Wagon and jeep track  
Light-duty ..... Foot trail  
U. S. Route  
In developed areas, only through roads are classified

JOHNSON CITY, TENN.

N3615-W8215/7.5

1959

PHOTOREVISED 1968

AMS 4556 IV SE-SERIES V841

2700

FEB 22 1971