

HARPETH VALLEY

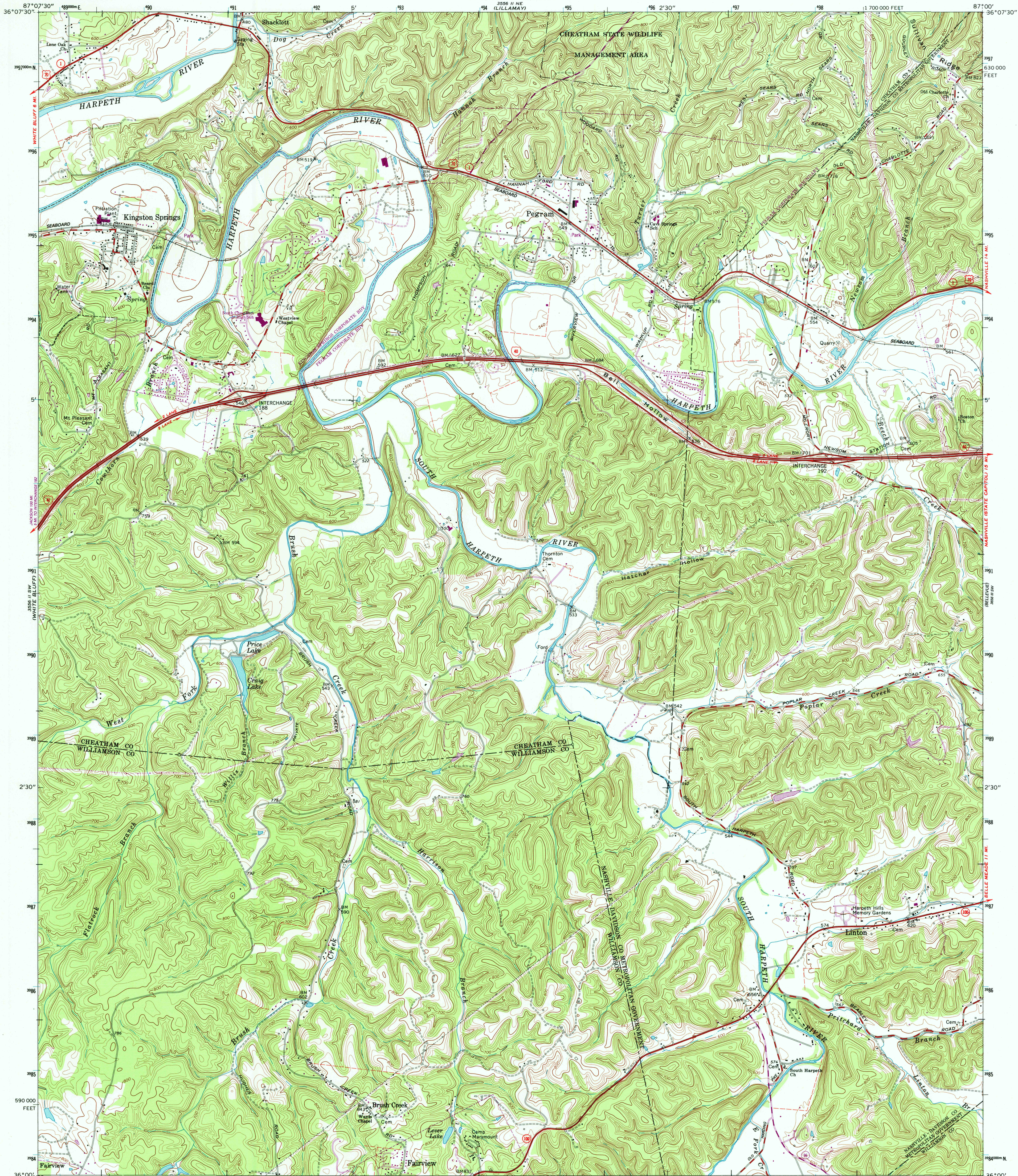


U.S. DEPARTMENT OF THE INTERIOR
U.S. GEOLOGICAL SURVEY

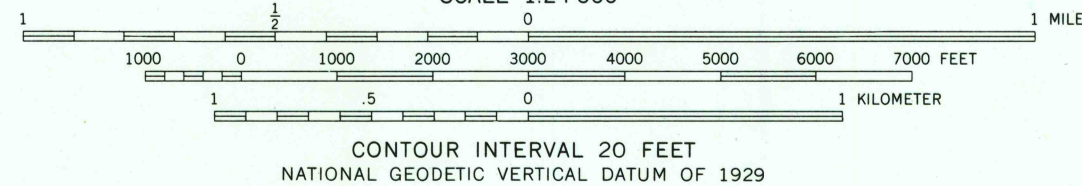
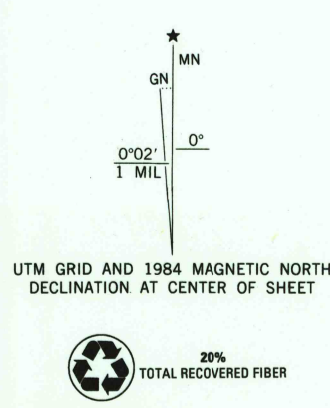
STATE OF TENNESSEE
DEPARTMENT OF CONSERVATION
DIVISION OF GEOLOGY

KINGSTON SPRINGS QUADRANGLE
TENNESSEE
7.5 MINUTE SERIES (TOPOGRAPHIC)

36° 07' 30" N
87° 07' 30" W
SCOTTSDALE



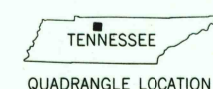
Mapped, edited, and published by the Geological Survey
Control by USGS, NOS/NOAA, and USCE
Topography by photogrammetric methods from aerial photographs
taken 1962. Field checked 1966
Polyconic projection. 10,000-foot grid ticks based on Tennessee
coordinate system
1000-meter Universal Transverse Mercator grid ticks,
zone 16, shown in blue
1927 North American Datum
To place on the predicted North American Datum 1983
move the projection lines 6 meters south as shown by
dashed corner ticks
Fine red dashed lines indicate selected fence and field lines where
generally visible on aerial photographs. This information is unchecked
There may be private inholdings within the boundaries of
the National or State reservations shown on this map



THIS MAP COMPLIES WITH NATIONAL MAP ACCURACY STANDARDS
FOR SALE BY U.S. GEOLOGICAL SURVEY, DENVER, COLORADO 80225, OR RESTON, VIRGINIA 22092
AND TENNESSEE DEPARTMENT OF CONSERVATION, DIVISION OF GEOLOGY, NASHVILLE, TENN. 37243
A FOLDER DESCRIBING TOPOGRAPHIC MAPS AND SYMBOLS IS AVAILABLE ON REQUEST

RECEIVED
JUN 30 2001

HISTORICAL MAP ARCHIVES



ROAD CLASSIFICATION
Heavy-duty ——— Light-duty ———
Medium-duty ——— Unimproved dirt ———
Interstate Route U.S. Route State Route

KINGSTON SPRINGS, TENN.
36087-A1-TF-024
1966
PHOTOREVISED 1984
DMA 3556 II SE—SERIES V841

