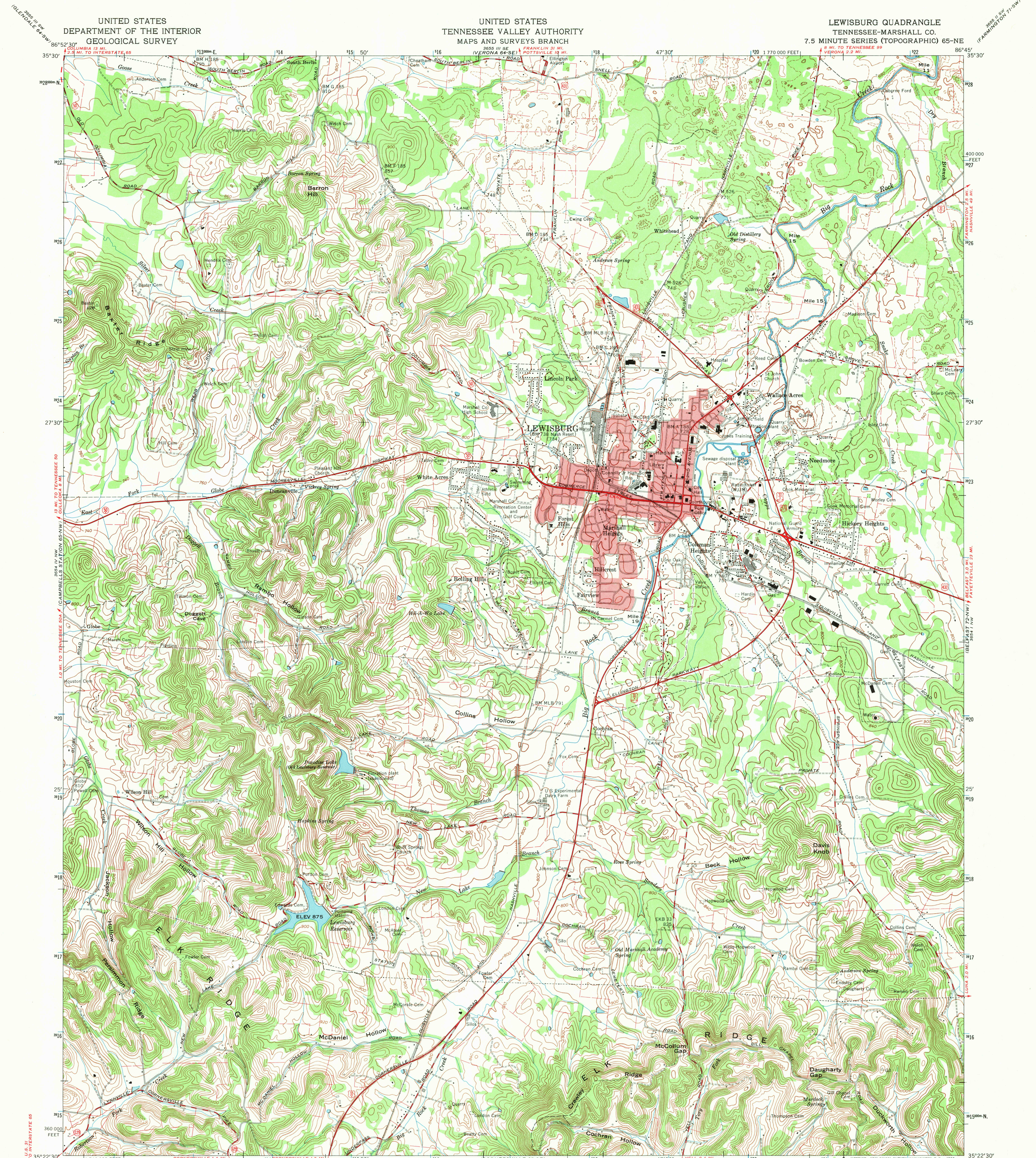


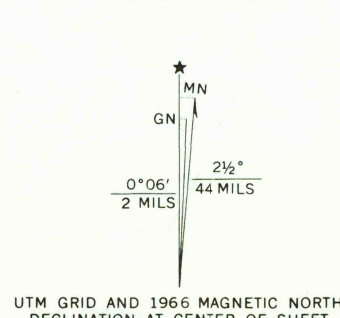
UNITED STATES  
DEPARTMENT OF THE INTERIOR  
GEOLOGICAL SURVEY

UNITED STATES  
TENNESSEE VALLEY AUTHORITY  
MAPS AND SURVEYS BRANCH

LEWISBURG QUADRANGLE  
TENNESSEE-MARSHALL CO.  
7.5 MINUTE SERIES (TOPOGRAPHIC) 65-NE



Mapped and edited by Tennessee Valley Authority  
Published by the Geological Survey  
Control by USC&GS, USGS, and TVA  
Revised by TVA in 1965 by photogrammetric methods using  
aerial photographs taken 1965 and by reference to TVA-USGS  
quadrangle dated 1949. Map field checked by TVA, 1966  
Polyconic projection, 1927 North American datum  
10,000 foot grid based on Tennessee rectangular  
coordinate system  
1000 meter Universal Transverse Mercator Grid ticks,  
Zone 16, shown in blue  
Fine red dashed lines indicate selected fence and field lines  
visible on aerial photographs. This information is unchecked  
Red tint indicates areas in which only landmark buildings are shown



SCALE 1:24,000  
CONTOUR INTERVAL 20 FEET  
DASHED LINES REPRESENT HALF-INTERVAL CONTOURS  
DATUM IS MEAN SEA LEVEL  
THIS MAP COMPLIES WITH NATIONAL MAP ACCURACY STANDARDS  
FOR SALE BY U.S. GEOLOGICAL SURVEY, WASHINGTON, D.C. 20242,  
TENNESSEE DIVISION OF GEOLOGY, NASHVILLE, TENN. 37219,  
U.S. TENNESSEE VALLEY AUTHORITY, CHATTANOOGA, TENN. 37401 OR KNOXVILLE, TENN. 37902.  
A FOLDER DESCRIBING TOPOGRAPHIC MAPS AND SYMBOLS IS AVAILABLE ON REQUEST



USGS  
HISTORICAL FILE  
TOPOGRAPHIC DIVISION

ROAD CLASSIFICATION

Heavy-duty	Poor motor road
Medium-duty	Wagon and jeep track
Light-duty	Foot trail
U. S. Route	State Route

In developed areas, only through roads are classified

2000

JUL 1 1969

LEWISBURG, TENN.  
N3522.5-W8645/7.5  
1966  
AMS 3654 IV NE-SERIES V841