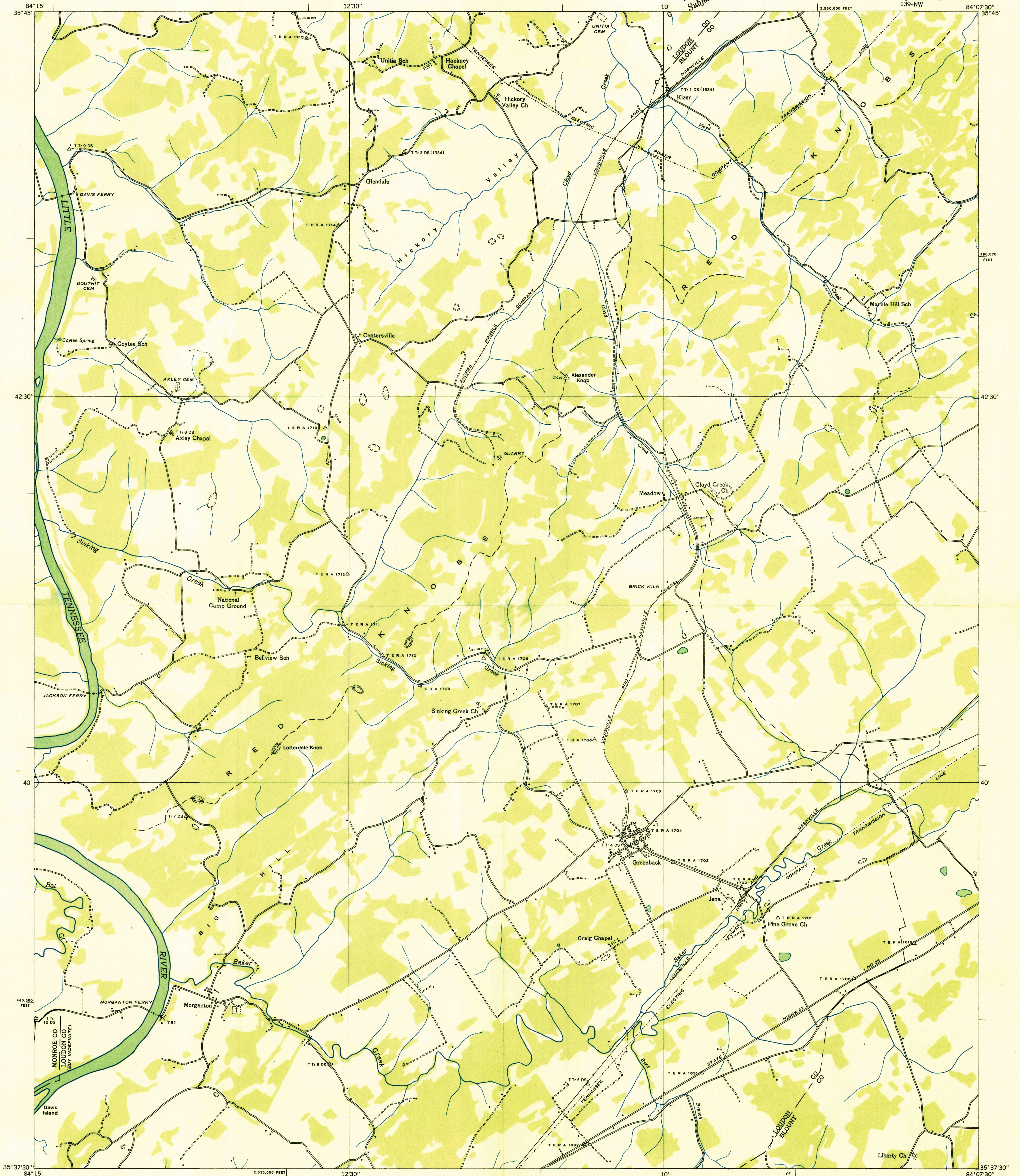
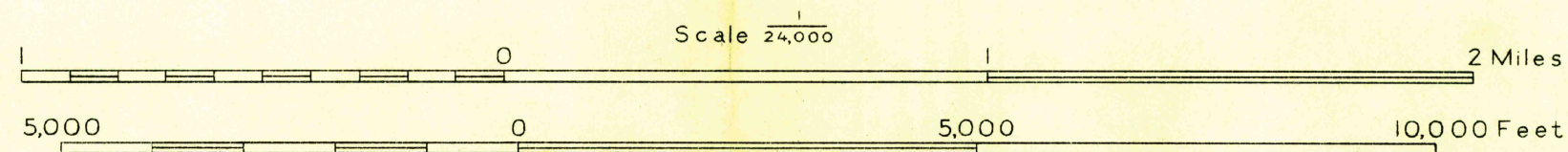


Advance sheet
Subject to correction



Albert Pike, Division Engineer
Compiled by U. S. Geological Survey from aerial photographs
Control by U. S. Geological Survey, U. S. Coast and Geodetic Survey,
Corps of Engineers, U. S. Army and Tenn. Em. Rel. Adm.
Field examination in 1935



Datum is mean sea level

Polyconic projection. 1927 North American datum
10,000 foot grid based on Tennessee
rectangular coordinate system
USGS HISTORICAL FILE TOPOGRAPHIC DIVISION
Ridge line
Trail
Sinks
APPROXIMATE MEAN DECLINATION, 1935
MEADOW, TENN.
139-NW