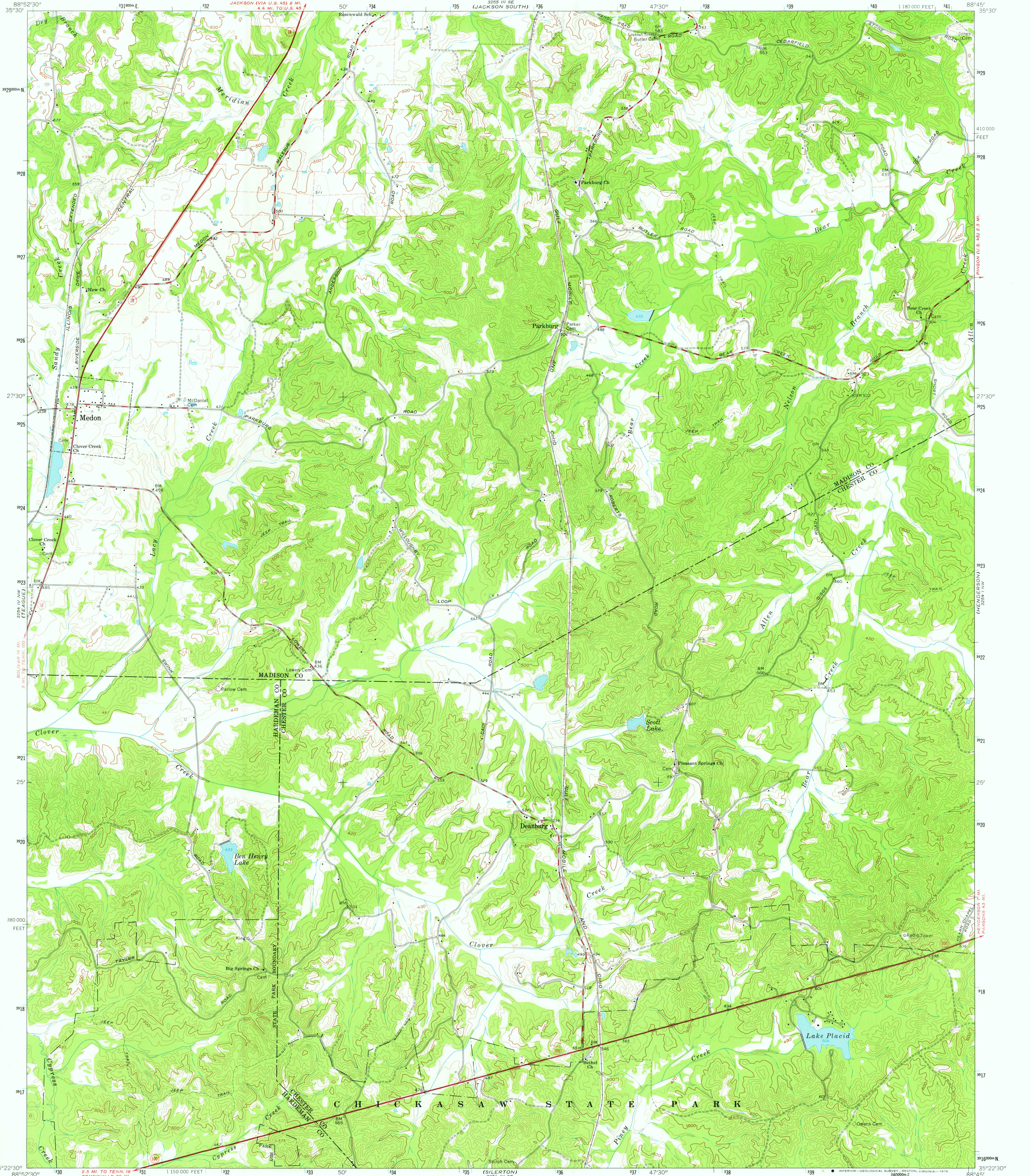
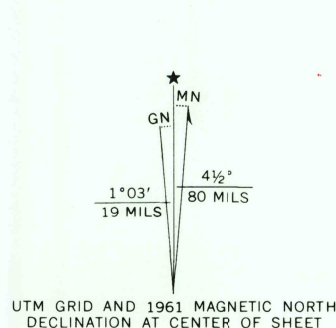


UNITED STATES
DEPARTMENT OF THE INTERIOR
GEOLOGICAL SURVEY

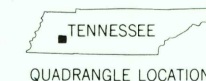
MEDON QUADRANGLE
TENNESSEE
7.5 MINUTE SERIES (TOPOGRAPHIC)



Mapped, edited, and published by the Geological Survey
Control by USGS, USC&GS, and TVA
Topography by photogrammetric methods from aerial
photographs taken 1956. Field checked 1961.
Polyconic projection. 1927 North American datum
10,000-foot grid based on Tennessee coordinate system
1000-metre Universal Transverse Mercator grid ticks,
zone 16, shown in blue
Fine red dashed lines indicate selected fence and field lines where
generally visible on aerial photographs. This information is unchecked



SCALE 1:24 000
CONTOUR INTERVAL 20 FEET
DOTTED LINES REPRESENT 10-FOOT CONTOURS
NATIONAL GEODETIC VERTICAL DATUM OF 1929



ROAD CLASSIFICATION
Heavy-duty ——— Light-duty ———
Medium-duty ——— Unimproved dirt ———
State Route

MEDON, TENN.
N3522.5—W8845.7/5

1961
AMS 3254 IV NE—SERIES V841

USGS
Historical File
Topographic Division

NOV 0 2 1976