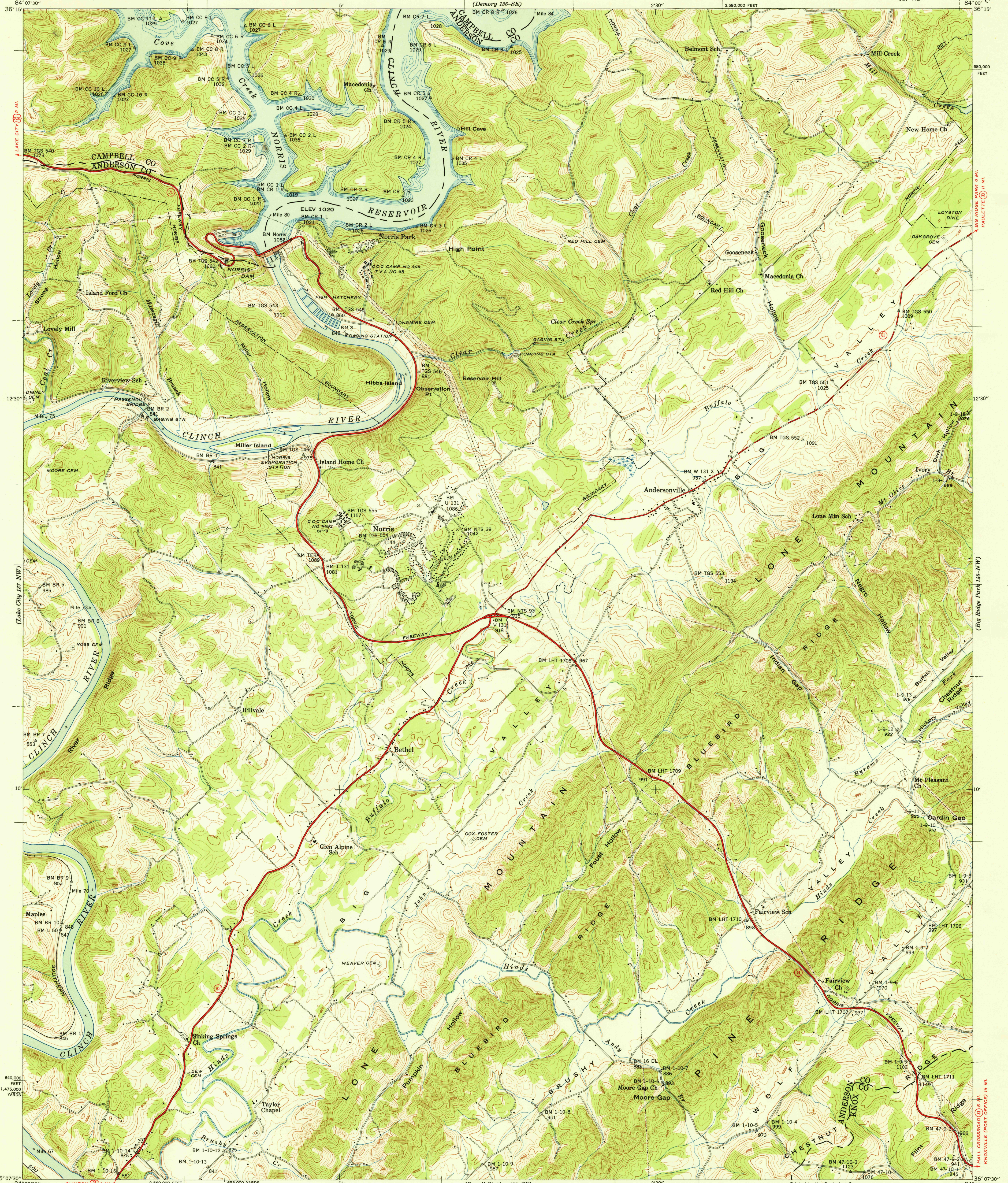


U. S. G. S.  
FILE COPY  
Inspection and Editing.

UNITED STATES  
DEPARTMENT OF THE INTERIOR  
GEOLOGICAL SURVEY

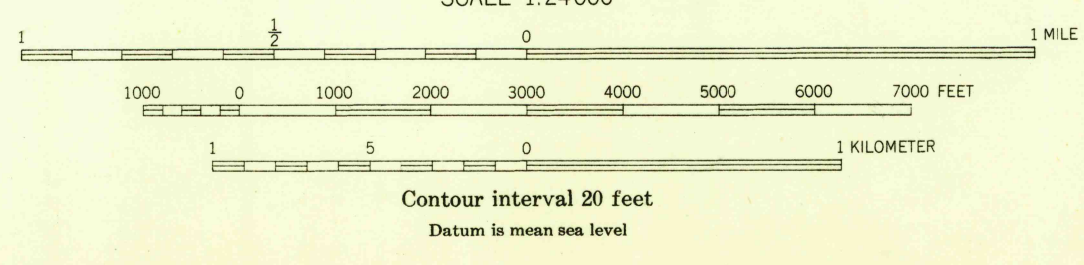
UNITED STATES  
TENNESSEE VALLEY AUTHORITY  
MAPS AND SURVEYS DIVISION  
(Memory 136-SE)

TENNESSEE  
NORRIS QUADRANGLE  
137-NE



Control by USCGS, USGS, TVA, and WPA  
Topography by Geological Survey from aerial  
photographs by stereophotogrammetric methods  
Field examination by Tennessee Valley Authority, 1941  
Maps distributed by the Geological Survey

APPROXIMATE MEAN  
DECLINATION, 1941



FOR SALE BY U. S. GEOLOGICAL SURVEY, WASHINGTON 25, D. C.

USGS  
HISTORICAL FILE  
TOPOGRAPHIC DIVISION

U. S. G. S.  
FILE COPY  
Inspection and Editing.

Polyconic projection, 1927 North American datum  
10,000 foot grid based on Tennessee  
rectangular coordinate system.  
5,000 yard grid based on U. S. zone system, B

ROUTES USUALLY TRAVELED  
HARD IMPROVED SURFACES  
OTHER SURFACE IMPROVEMENTS  
1941

U. S. ROUTE  
STATE ROUTE

NORRIS, TENN.  
137-NE  
Edition of 1941  
reprinted 1950  
N 3607.5-W 84007.5

JUN 27 1950 1140