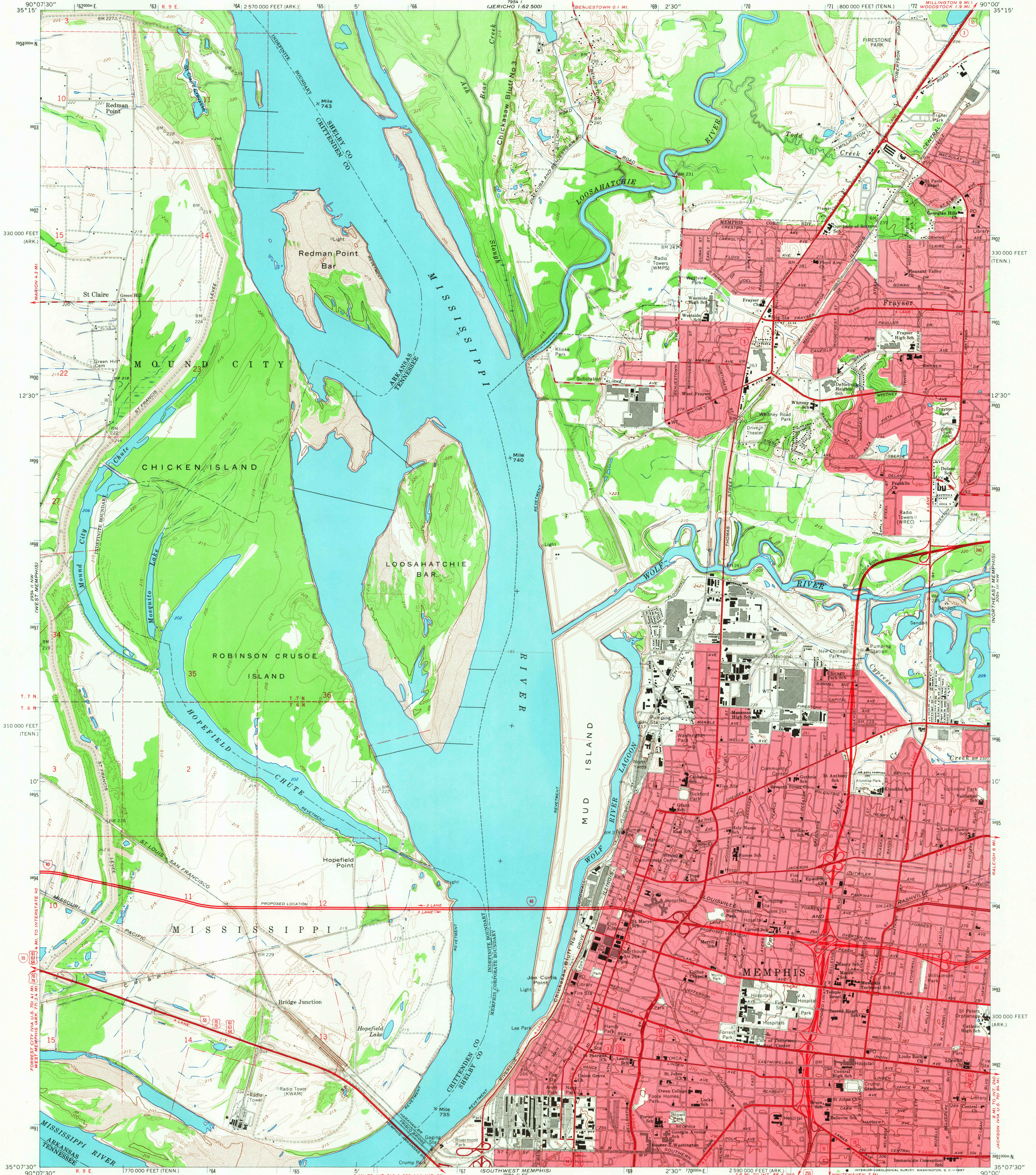
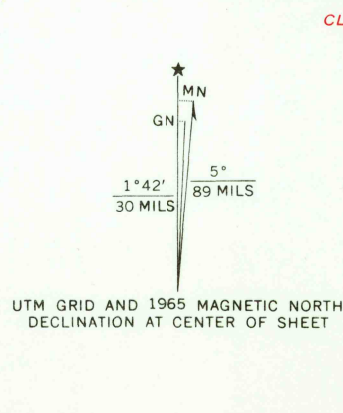


UNITED STATES  
DEPARTMENT OF THE INTERIOR  
GEOLOGICAL SURVEY

NORTHWEST MEMPHIS QUADRANGLE  
TENNESSEE-ARKANSAS  
7.5 MINUTE SERIES (TOPOGRAPHIC)  
NE 1/4 MEMPHIS 15' QUADRANGLE



Mapped, edited, and published by the Geological Survey  
Control by USGS, USC&GS, USCE, and Tennessee Geodetic Survey  
Topography by photogrammetric methods from aerial  
photographs taken 1963. Field checked 1965  
Polyconic projection. 1927 North American datum  
10,000-foot grids based on Tennessee coordinate system, and  
Arkansas coordinate system, north zone  
1000-meter Universal Transverse Mercator grid ticks,  
zone 15, shown in blue  
Fine red dashed lines indicate selected fence and field lines where  
generally visible on aerial photographs. This information is unchecked  
Red tint indicates areas in which only landmark buildings are shown



CONTOUR INTERVAL 10 FEET  
DOTTED LINES REPRESENT 5-FOOT CONTOURS  
DATUM IS MEAN SEA LEVEL  
THIS MAP COMPLIES WITH NATIONAL MAP ACCURACY STANDARDS  
FOR SALE BY U.S. GEOLOGICAL SURVEY, DENVER, CO. 80225 OR WASHINGTON, D.C. 20242,  
TENNESSEE DIVISION OF GEOLOGY, NASHVILLE, TENN. 37219,  
ARKANSAS GEOLOGICAL COMMISSION, LITTLE ROCK, ARK. 72201,  
AND MISSISSIPPI RIVER COMMISSION, VICKSBURG, MISS. 39331  
A FOLDER DESCRIBING TOPOGRAPHIC MAPS AND SYMBOLS IS AVAILABLE ON REQUEST

USGS  
HISTORICAL FILE  
TOPOGRAPHIC DIVISION  
U.S.G.S.  
FILE COPY  
TOPOGRAPHIC DIVISION

ROAD CLASSIFICATION  
Heavy-duty — Light-duty  
Medium-duty — Unimproved dirt  
Interstate Route — U.S. Route — State Route  
NORTHWEST MEMPHIS, TENN.-ARK.  
NE 1/4 MEMPHIS 15' QUADRANGLE  
N3507.5-W9000/7.5