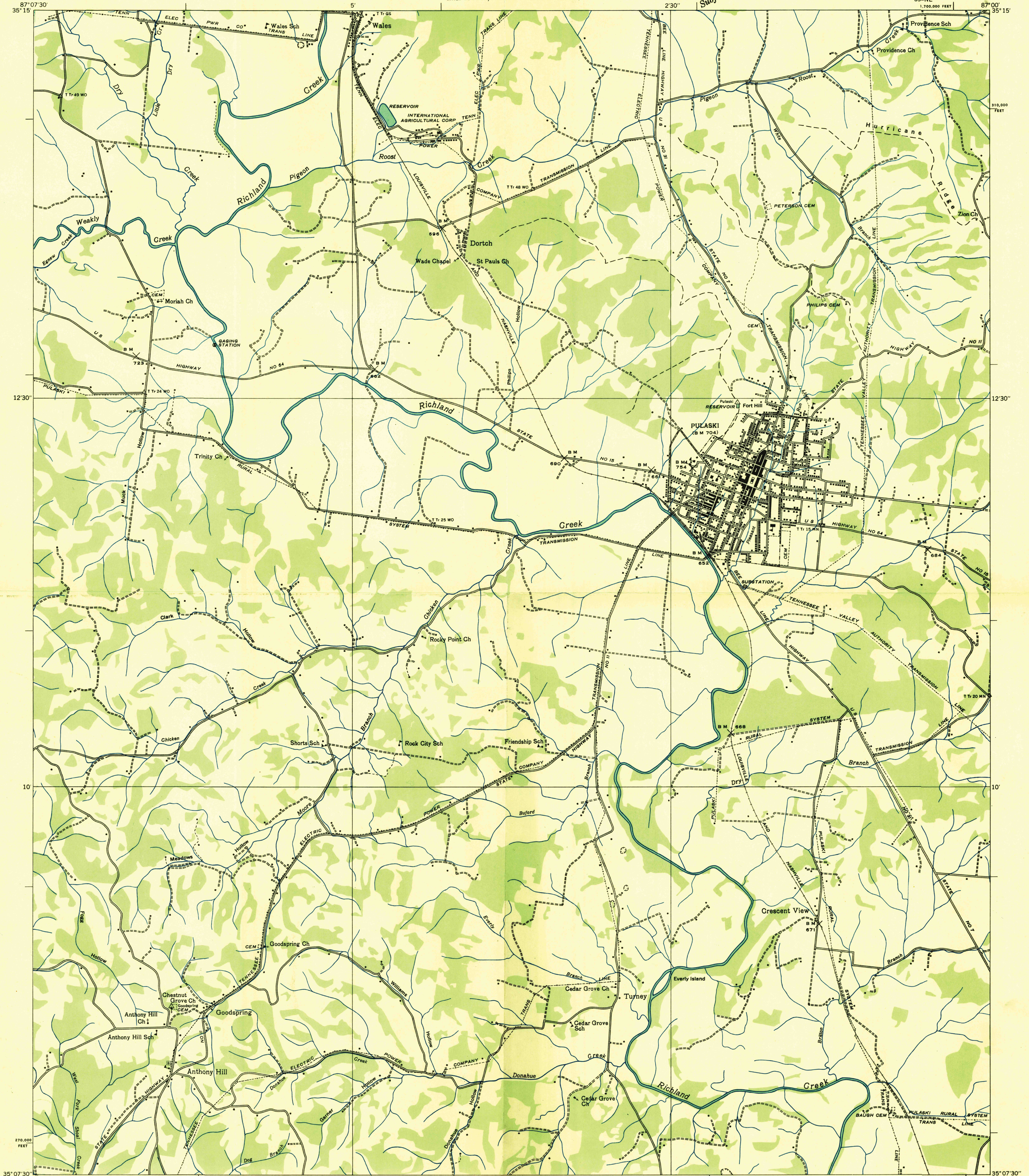
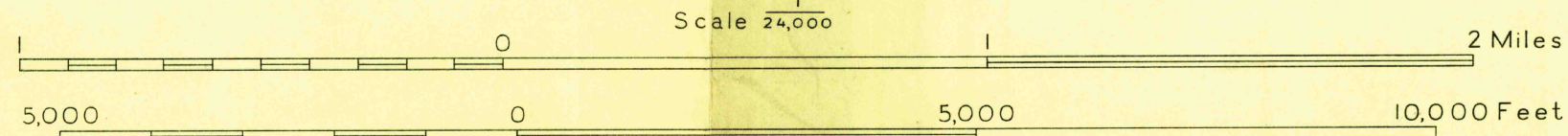


Advance sheet  
Subject to correction



Albert Pike, Division Engineer  
Compiled by U. S. Geological Survey from aerial photographs  
Control by U. S. Geological Survey and U. S. Coast and Geodetic Survey  
Field examination in 1936



Datum is mean sea level

TOPOGRAPHIC DIVISION

Polyconic projection. 1927 North American datum  
10,000 foot grid based on Tennessee  
rectangular coordinate system  
Ridge line  
Trail  
Sinks  
APPROXIMATE MEAN  
DECLINATION, 1936  
**PULASKI, TENN.**  
59-NE