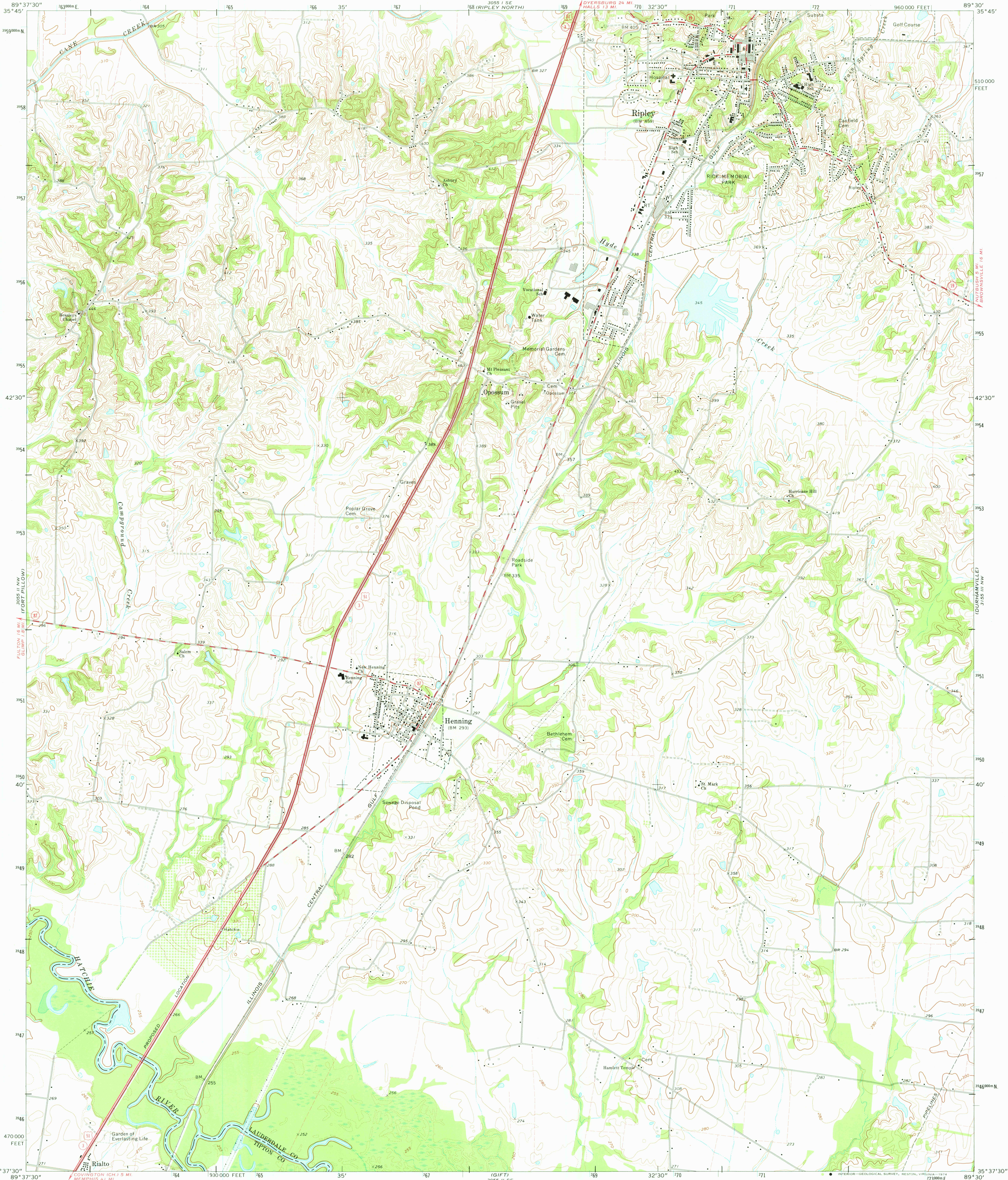


UNITED STATES  
DEPARTMENT OF THE INTERIOR  
GEOLOGICAL SURVEY

RIPLEY SOUTH QUADRANGLE  
TENNESSEE  
7.5 MINUTE SERIES (TOPOGRAPHIC)  
NE/4 RIALTO 15' QUADRANGLE



Mapped, edited, and published by the Geological Survey  
Control by USGS and USC&GS  
Topography by photogrammetric methods from aerial  
photographs taken 1971. Field checked 1972  
Projection and 10,000-foot grid ticks: Tennessee coordinate  
system (Lambert conformal conic)  
1000-meter Universal Transverse Mercator grid ticks,  
zone 16, shown in blue. 1927 North American datum  
Fine red dashed lines indicate selected fence and field lines where  
generally visible on aerial photographs. This information is unchecked

UTM GRID AND 1972 MAGNETIC NORTH  
DECLINATION AT CENTER OF SHEET

SCALE 1:24,000  
CONTOUR INTERVAL 10 FEET  
DOTTED LINES REPRESENT 5-FOOT CONTOURS  
DATUM IS MEAN SEA LEVEL

THIS MAP COMPLIES WITH NATIONAL MAP ACCURACY STANDARDS  
FOR SALE BY U. S. GEOLOGICAL SURVEY, RESTON, VIRGINIA 22092  
AND TENNESSEE DIVISION OF GEOLOGY, NASHVILLE, TENNESSEE 37219  
A FOLDER DESCRIBING TOPOGRAPHIC MAPS AND SYMBOLS IS AVAILABLE ON REQUEST

ROAD CLASSIFICATION  
Primary highway, hard surface  
Secondary highway, hard surface  
Unimproved road  
Light-duty road, hard or improved surface  
Interstate Route  
U. S. Route  
State Route

USGS  
Historical File  
Topographic Division

RIPLEY SOUTH, TENN.  
NE/4 RIALTO 15' QUADRANGLE  
N3537.5-W8930.7/7.5

1972

AMS 3055 II NE-SERIES V841

FEB 14 1975