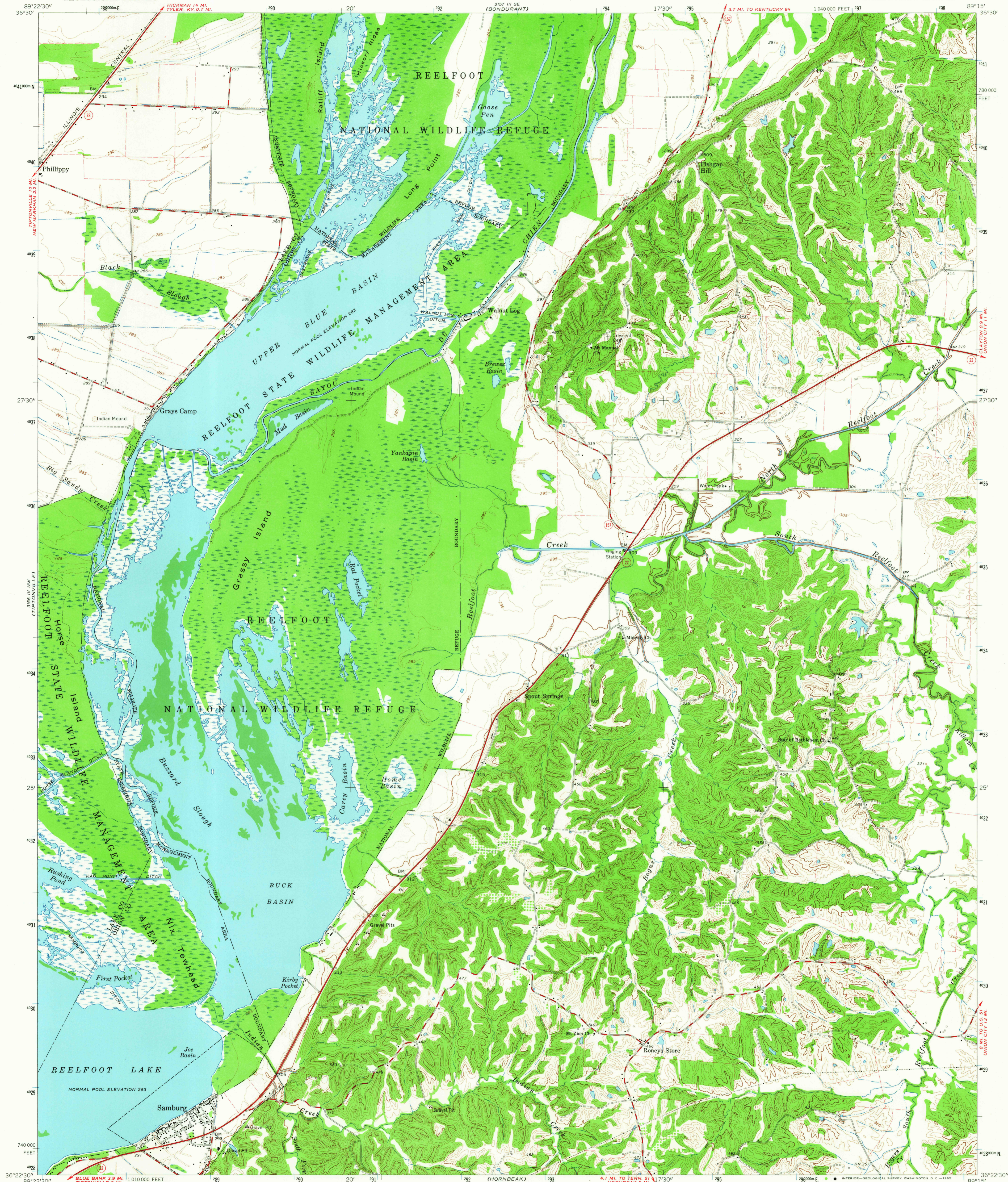


UNITED STATES
DEPARTMENT OF THE INTERIOR
GEOLOGICAL SURVEY

SAMBURG QUADRANGLE
TENNESSEE
7.5 MINUTE SERIES (TOPOGRAPHIC)
NE 1/4 REELFOOT LAKE 15' QUADRANGLE



Mapped, edited, and published by the Geological Survey
Control by USGS and USC&GS
Topography by photogrammetric methods from aerial
photographs taken 1963 and planetable surveys 1964
Polyconic projection. 1927 North American datum
10,000-foot grid based on Tennessee coordinate system
1000-meter Universal Transverse Mercator grid ticks,
zone 16, shown in blue
Fine red dashed lines indicate selected fence and field lines where
generally visible on aerial photographs. This information is unchecked

UTM GRID AND 1964 MAGNETIC NORTH
DECLINATION AT CENTER OF SHEET

SCALE 1:24,000
CONTOUR INTERVAL 20 FEET
DOTTED LINES REPRESENT 5-FOOT CONTOURS
DATUM IS MEAN SEA LEVEL

USGS
HISTORICAL FILE
TOPOGRAPHIC DIVISION

TENNESSEE
QUADRANGLE LOCATION

ROAD CLASSIFICATION
Heavy-duty ——— Light-duty ———
Medium-duty ——— Unimproved dirt ———
State Route

SAMBURG, TENN.
NE 1/4 REELFOOT LAKE 15' QUADRANGLE
N3622.5—W8915.7.5

1964

AMS 3156 IV NE—SERIES V841

JUL 27 1965

2785
U.S.G.S.

FILE COPY
TOPOGRAPHIC DIVISION