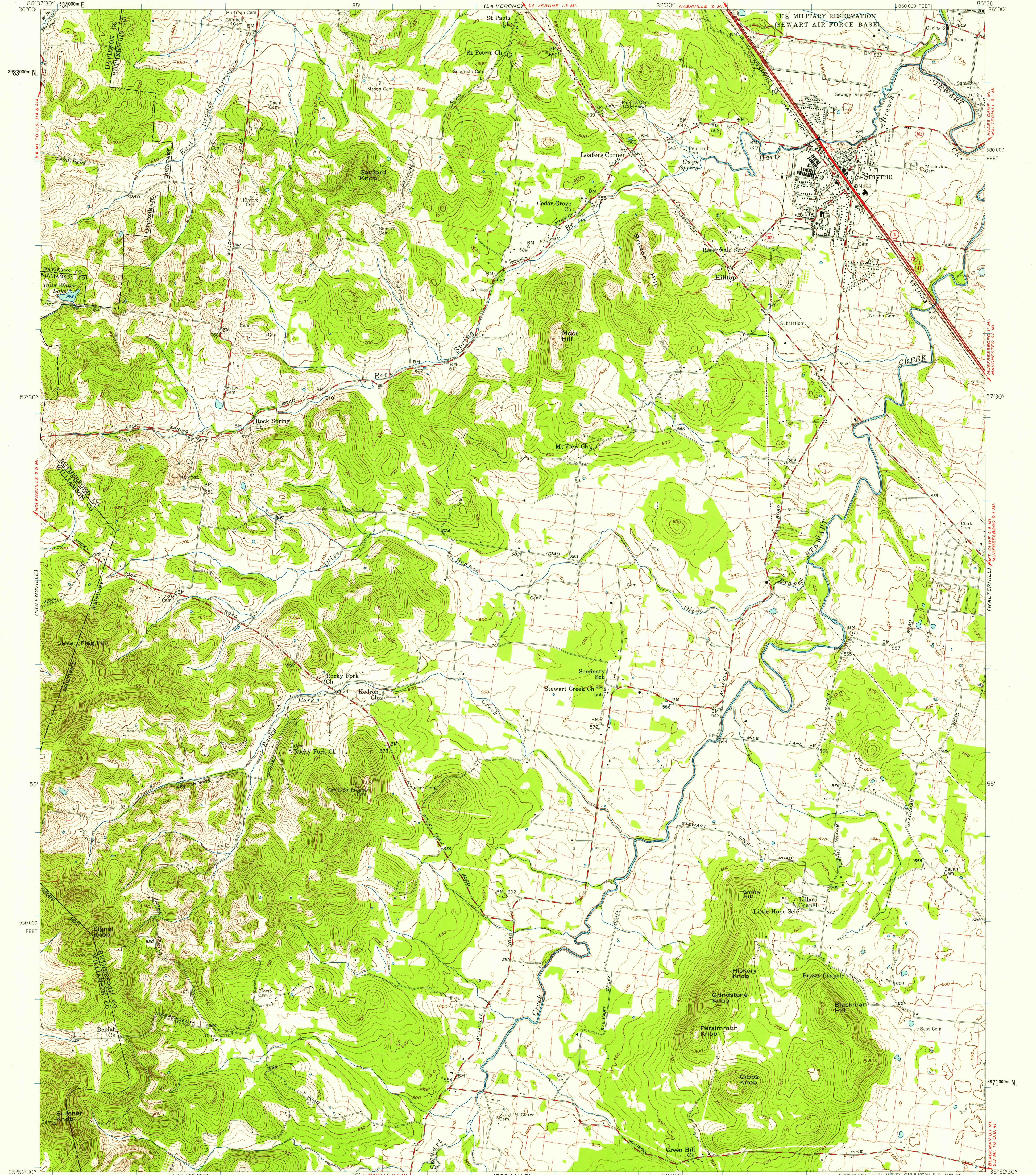


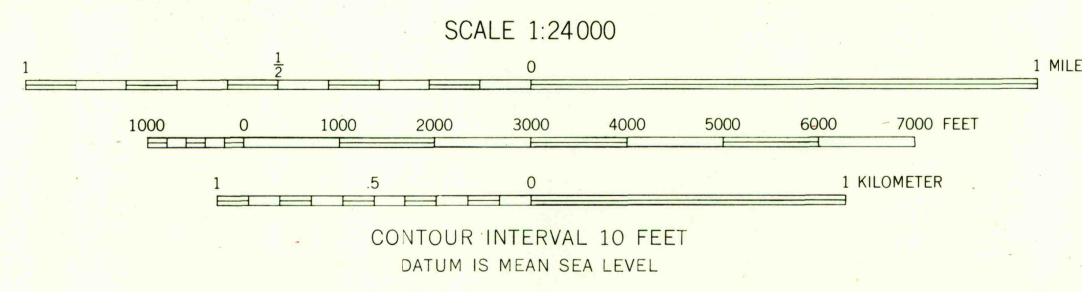
UNITED STATES
DEPARTMENT OF THE INTERIOR
GEOLOGICAL SURVEY

SMYRNA QUADRANGLE
TENNESSEE
7.5 MINUTE SERIES (TOPOGRAPHIC)



Mapped, edited, and published by the Geological Survey
Control by USGS, USC&GS, USCE, and Tennessee Geodetic Survey
Topography from aerial photographs by Kelsh plotter
Aerial photographs taken 1951. Field check 1957
Polyconic projection. 1927 North American datum
10,000-foot grid based on Tennessee coordinate system
1000-meter Universal Transverse Mercator grid ticks,
zone 16, shown in blue
Fine red dashed lines indicate selected fence and field lines
visible on aerial photographs. This information is unchecked
Unchecked elevations are shown in brown

TRUE NORTH
MAGNETIC NORTH
APPROXIMATE MEAN
DECLINATION, 1957



USGS
HISTORICAL FILE
TOPOGRAPHIC DIVISION

TENNESSEE
QUADRANGLE LOCATION

ROAD CLASSIFICATION
Heavy-duty ——— Light-duty ———
Medium-duty ——— Unimproved dirt ———
U.S. Route ——— State Route ———

U.S.G.S.
FILE COPY
TOPOGRAPHIC DIVISION

SMYRNA, TENN.
N3552.5-W8630.75
1957

JUN 4 1958

2440