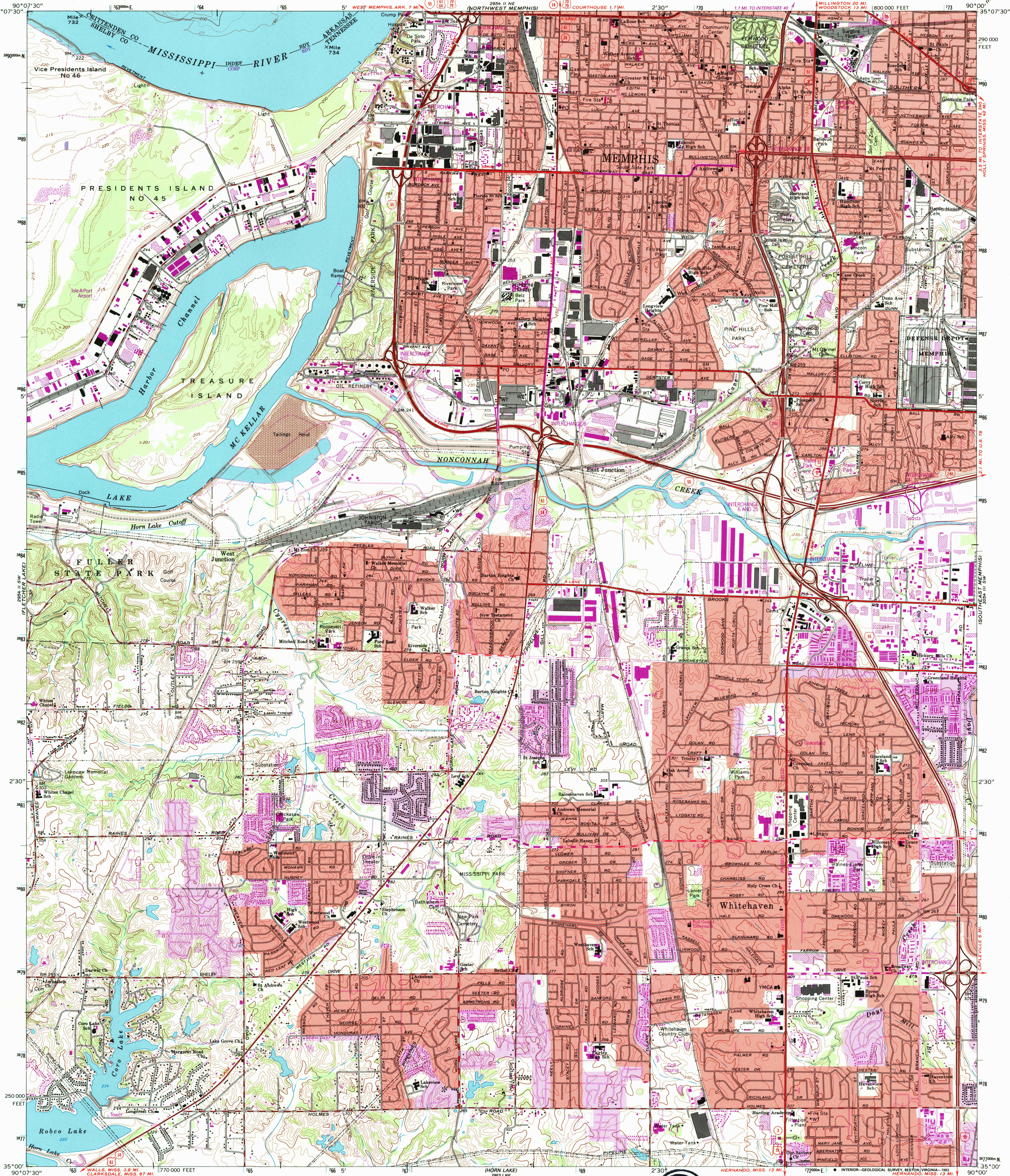


UNITED STATES  
DEPARTMENT OF THE INTERIOR  
GEOLOGICAL SURVEY

SOUTHWEST MEMPHIS QUADRANGLE  
TENNESSEE-ARKANSAS  
7.5 MINUTE SERIES (TOPOGRAPHIC)  
SE/4 MEMPHIS 15' QUADRANGLE

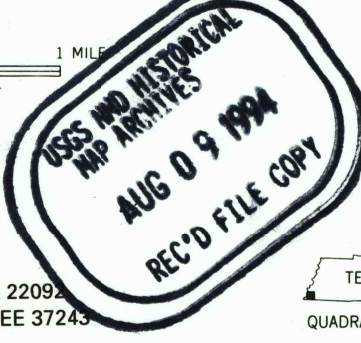


Produced by the United States Geological Survey  
Control by USGS, NOS/NOAA, USCE, and Tennessee Geodetic Survey  
Topography by photogrammetric methods from aerial photographs  
taken 1963. Field checked 1965  
Projection and 10,000-foot grid ticks: Tennessee coordinate  
system, (Lambert conformal conic)  
1000-meter Universal Transverse Mercator grid ticks, zone 15, shown in blue  
1927 North American Datum (NAD 27)  
North American Datum of 1983 (NAD 83) is shown by dashed corner ticks  
The values of the shift between NAD 27 and NAD 83 for 7.5-minute  
intersections are given in USGS Bulletin 1875  
There may be private inholdings within the boundaries of  
the National or State reservations shown on this map  
Red tint indicates areas in which only landmark buildings are shown  
Fine red dashed lines indicate selected fence and field lines where  
generally visible on aerial photographs. This information is unchecked

UTM GRID AND 1993 MAGNETIC NORTH:  
DECLINATION AT CENTER OF SHEET

SCALE 1:24,000  
CONTOUR INTERVAL 10 FEET  
DOTTED LINES REPRESENT 5-FOOT CONTOURS  
NATIONAL GEODETIC VERTICAL DATUM OF 1929

FOR SALE BY U.S. GEOLOGICAL SURVEY, DENVER, COLORADO 80225, OR RESTON, VIRGINIA 22091  
TENNESSEE DEPARTMENT OF CONSERVATION, DIVISION OF GEOLOGY, NASHVILLE, TENNESSEE 37243  
AND ARKANSAS GEOLOGICAL COMMISSION, LITTLE ROCK, ARK. 72204  
A FOLDER DESCRIBING TOPOGRAPHIC MAPS AND SYMBOLS IS AVAILABLE ON REQUEST



ROAD CLASSIFICATION  
Heavy-duty ——— Light-duty ———  
Medium-duty ——— Unimproved dirt ———  
Interstate Route U.S. Route State Route

SOUTHWEST MEMPHIS, TENN.-ARK.  
SE/4 MEMPHIS 15' QUADRANGLE  
35090-A1-TF-024

1965  
REVISED 1993  
DMA 2954 II SE--SERIES V841