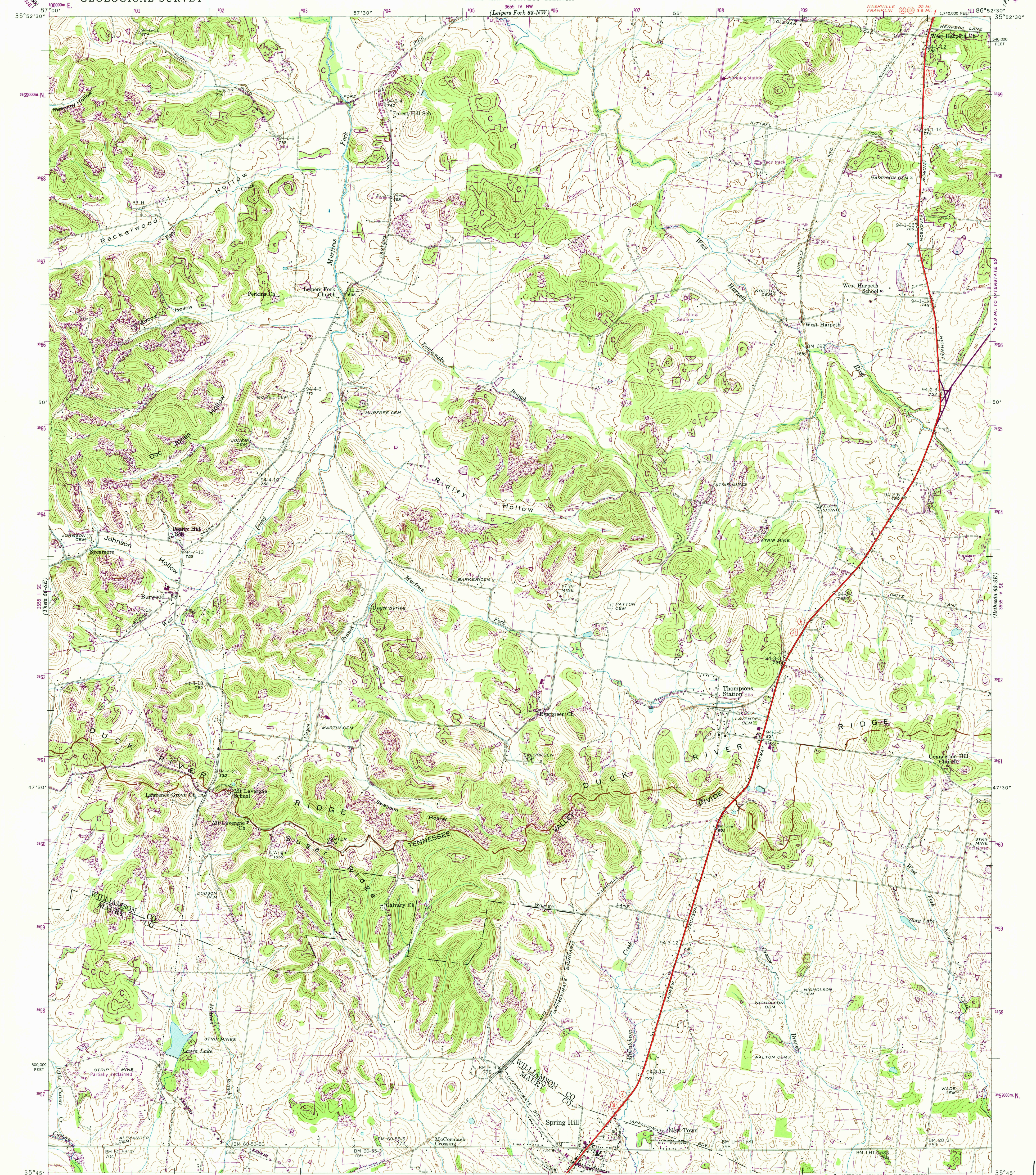


UNITED STATES  
DEPARTMENT OF THE INTERIOR  
GEOLOGICAL SURVEY

UNITED STATES  
TENNESSEE VALLEY AUTHORITY  
MAPS AND SURVEYS BRANCH

TENNESSEE  
SPRING HILL QUADRANGLE  
63-SW



Control by USC&GS, USGS, and TVA  
Topography by USGS and TVA from aerial  
photographs by stereophotogrammetric methods  
Field examination by Tennessee Valley Authority, 1946

Maps distributed by the Geological Survey

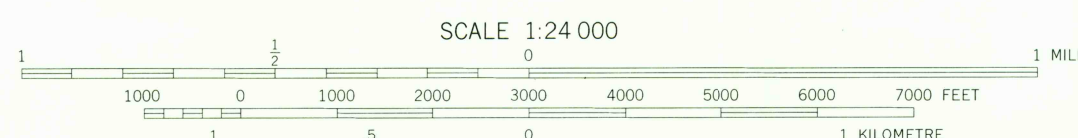
1000-metre Universal Transverse Mercator grid ticks,  
zone 16, shown in blue

Grid declination 0°02' 1 mi West

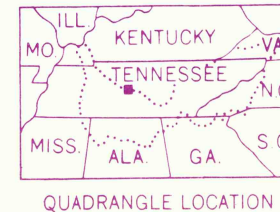
Revisions in purple compiled by TVA, July 1967 from  
March 1966 photography without field examination

No larger scale topographic maps available from TVA.

APPROXIMATE MEAN  
DECLINATION, 1967



Contour interval 20 feet  
Occasional 10 foot contours shown by broken lines  
National geodetic vertical datum of 1929



**LEGEND**

Fence and field line .....  
Stream .....  
Pond and dam .....  
Strip mine .....  
Woodland (formerly clearing) .....  
Clearing (formerly woodland) .....  
General deletion .....  
Heavy duty road .....  
Light-duty road .....  
Wagon and jeep track .....  
Foot trail .....

**ROUTES USUALLY TRAVELED**

**HARD, IMPERVIOUS SURFACES,  
OTHER SURFACE IMPROVEMENTS**

**U. S. ROUTE** **STATE ROUTE**

Polycyclic projection, 1927 North American datum  
10,000 foot grid based on Tennessee  
rectangular coordinate system

**SPRING HILL, TENN.**

63-SW 1946 AMS 3655 IV SW-SERIES V841

USGS  
Historical File  
Topographic Division

N3545-W8652.5/7.5  
5 1975

FOR SALE BY U. S. GEOLOGICAL SURVEY, RESTON, VIRGINIA 22092  
AND U. S. TENNESSEE VALLEY AUTHORITY, CHATTANOOGA 37401, OR KNOXVILLE, TENNESSEE 37902

2/14/75  
150PL  
2500GR  
5088  
PR  
67  
63-SW