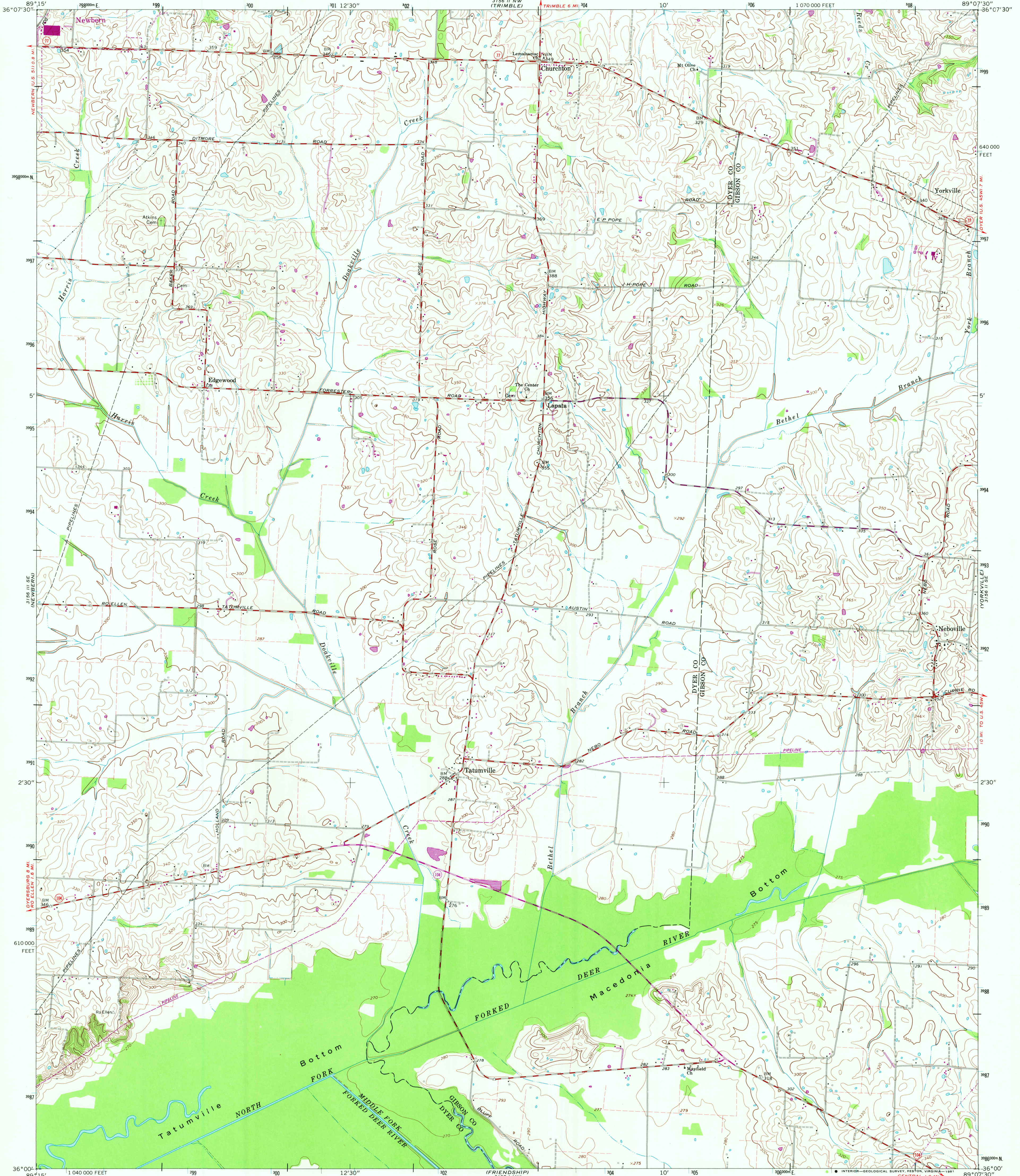


UNITED STATES  
DEPARTMENT OF THE INTERIOR  
GEOLOGICAL SURVEY

TATUMVILLE QUADRANGLE  
TENNESSEE  
7.5 MINUTE SERIES (TOPOGRAPHIC)



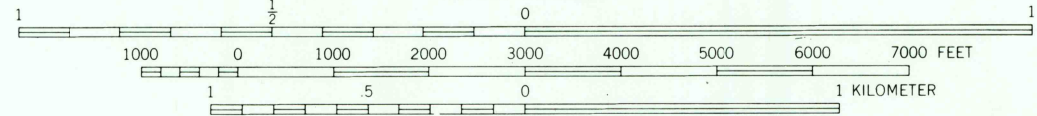
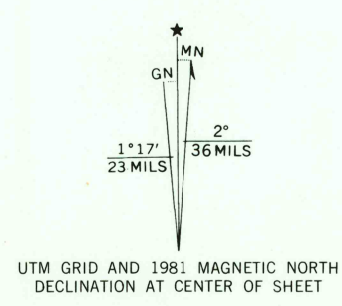
Mapped, edited, and published by the Geological Survey

Control by USGS, NOS/NOAA, and TVA  
Topography by photogrammetric methods from aerial  
photographs taken 1956 and planetable surveys 1965

Polyconic projection  
10,000-foot grid based on Tennessee coordinate system  
1000-meter Universal Transverse Mercator grid ticks,  
zone 16, shown in blue 1927 North American Datum  
To place on the predicted North American Datum 1983  
move the projection lines 6 meters south and  
6 meters east as shown by dashed corner ticks

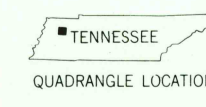
Fine red dashed lines indicate selected fence and field lines where  
generally visible on aerial photographs. This information is unchecked

Revisions shown in purple compiled from aerial photographs  
taken 1975 and other source data. This information not  
field checked. Map edited 1981



CONTOUR INTERVAL 10 FEET  
DOTTED LINES REPRESENT 5-FOOT CONTOURS  
NATIONAL GEODETIC VERTICAL DATUM OF 1929

THIS MAP COMPLIES WITH NATIONAL MAP ACCURACY STANDARDS  
FOR SALE BY U.S. GEOLOGICAL SURVEY, RESTON, VIRGINIA 22092  
AND TENNESSEE DIVISION OF GEOLOGY, NASHVILLE, TENNESSEE 37219  
A FOLDER DESCRIBING TOPOGRAPHIC MAPS AND SYMBOLS IS AVAILABLE ON REQUEST



ROAD CLASSIFICATION  
Medium-duty ——— Light-duty ———  
Unimproved dirt ———  
State Route ———

TATUMVILLE, TENN.  
N3600—W8907.5/7.5

1965  
PHOTOREVISED 1981  
DMA 3156 II SW-SERIES V841

USGS  
HISTORICAL FILE  
NATIONAL MAPPING DIVISION

JUL 23 1981

2050