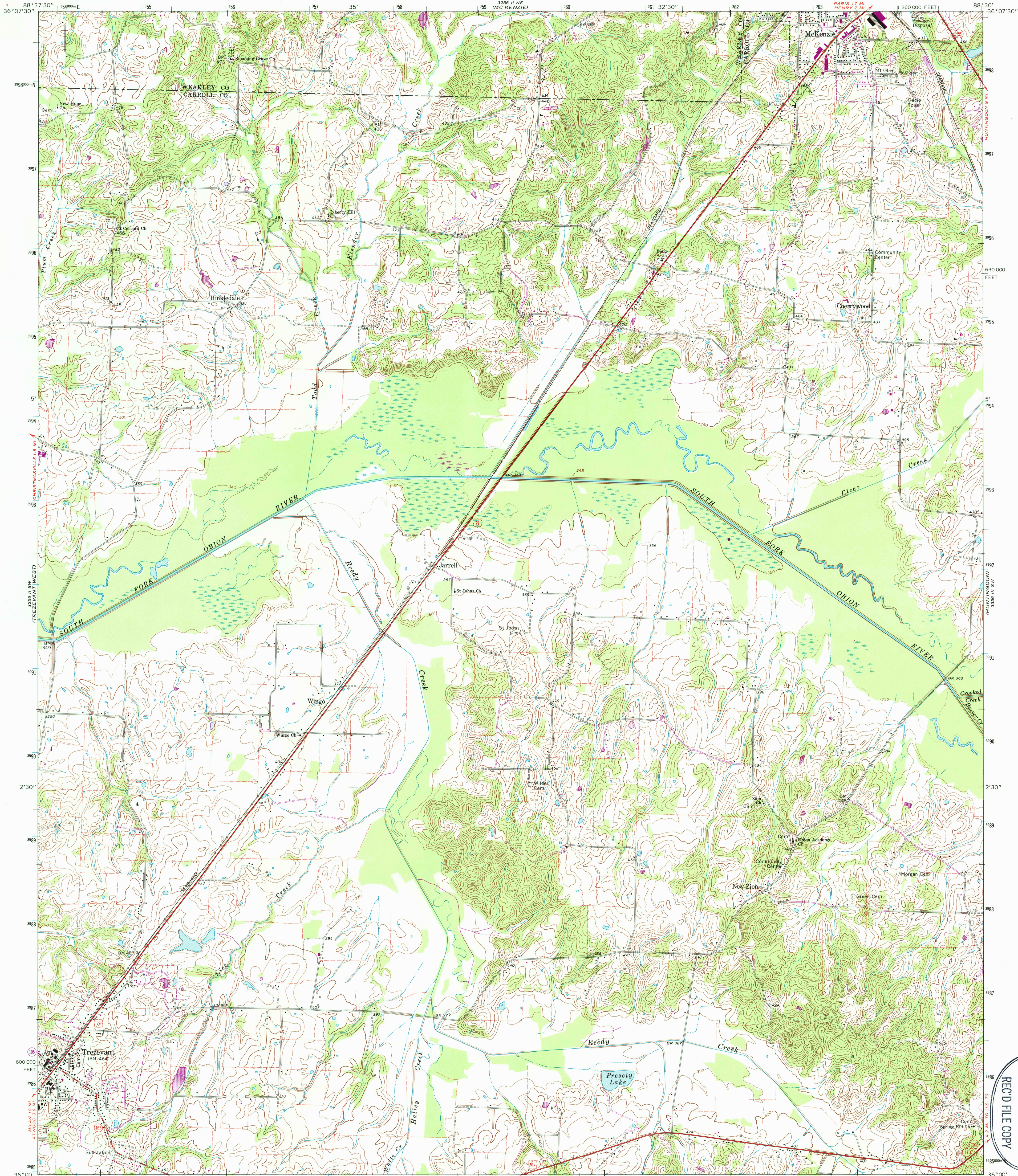
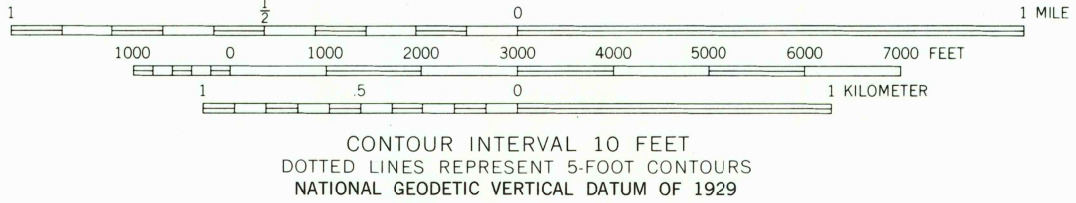
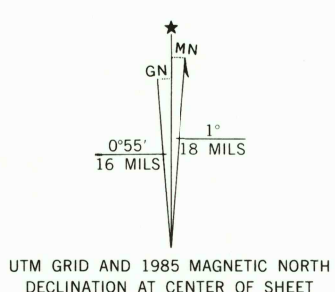


UNITED STATES  
DEPARTMENT OF THE INTERIOR  
GEOLOGICAL SURVEY

TREZEVANT EAST QUADRANGLE  
TENNESSEE  
7.5 MINUTE SERIES (TOPOGRAPHIC)



Mapped, edited, and published by the Geological Survey  
Control by USGS, NOS/NOAA, and Tennessee Valley Authority  
Topography by photogrammetric methods from aerial photographs  
taken 1955. Field checked 1967  
Polyconic projection. 10,000-foot grid ticks based on  
Tennessee coordinate system  
1000-meter Universal Transverse Mercator grid ticks,  
zone 16, shown in blue  
1927 North American Datum  
To place on the predicted North American Datum 1983  
move the projection lines 6 meters south and  
4 meters east as shown by dashed corner ticks  
Fine red dashed lines indicate selected fence and field lines where  
generally visible on aerial photographs. This information is unchecked



THIS MAP COMPLIES WITH NATIONAL MAP ACCURACY STANDARDS  
FOR SALE BY U. S. GEOLOGICAL SURVEY, RESTON, VIRGINIA 22092  
AND TENNESSEE DEPARTMENT OF CONSERVATION, DIVISION OF GEOLOGY, NASHVILLE, TENN. 37219  
A FOLDER DESCRIBING TOPOGRAPHIC MAPS AND SYMBOLS IS AVAILABLE ON REQUEST



Revisions shown in purple and woodland compiled from  
aerial photographs taken 1981 and other sources. This  
information not field checked. Map edited 1985

| ROAD CLASSIFICATION                          |  |
|--|--|
| Primary highway, all weather, hard surface   | Light-duty road, all weather, improved surface |
| Secondary highway, all weather, hard surface | Unimproved road, fair or dry weather           |
| U. S. Route                                  | State Route                                    |

TREZEVANT EAST, TENN.  
36088-A5-TF-024

1967  
PHOTO-REVISED 1985  
DMA 3256 II SE - SERIES V841

USGS NMD HISTORICAL MAP  
MAR 28 1996  
RECD FILE COPY

(PALMER SHELF)