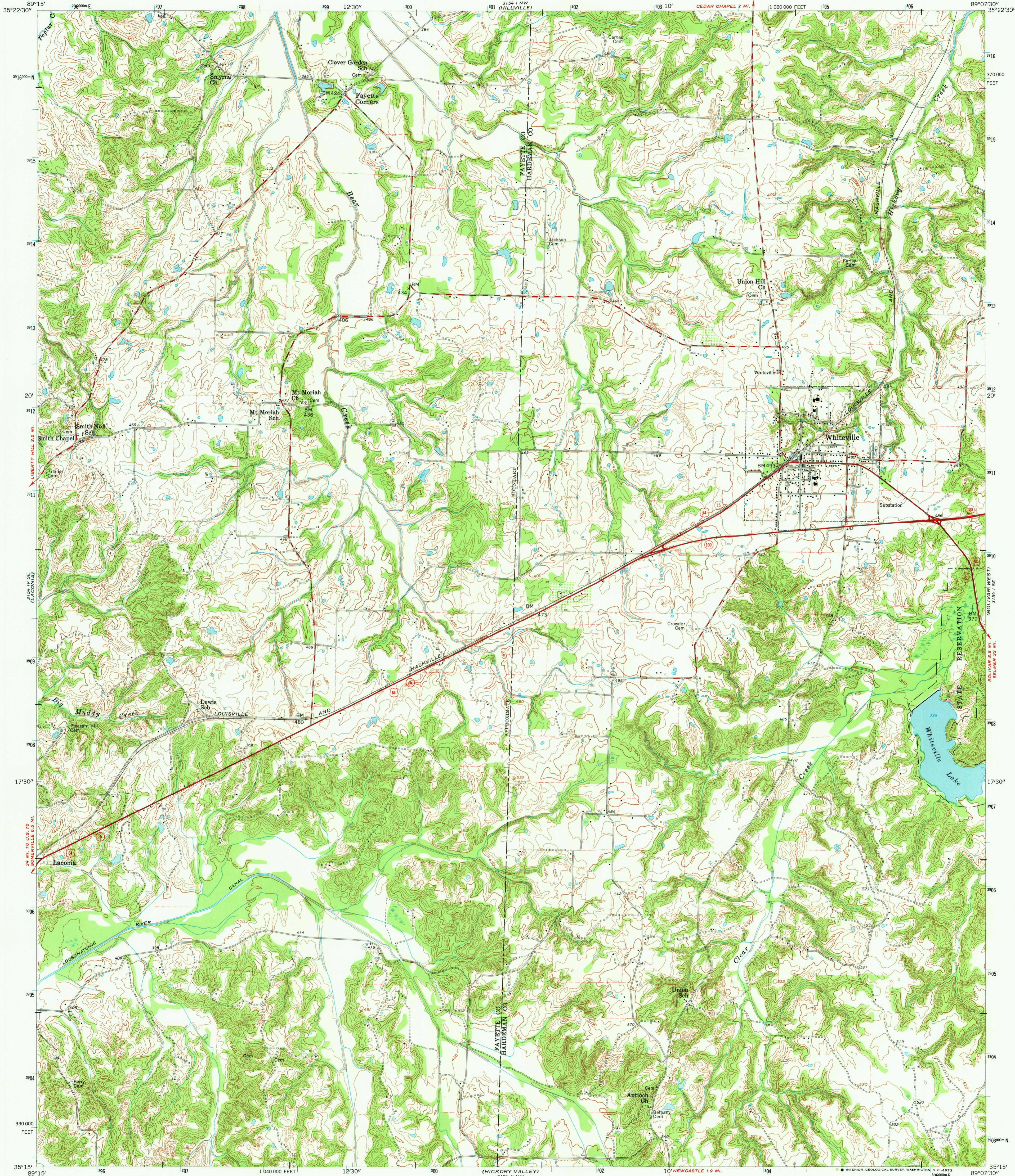


UNITED STATES
DEPARTMENT OF THE INTERIOR
GEOLOGICAL SURVEY

WHITEVILLE QUADRANGLE
TENNESSEE
7.5 MINUTE SERIES (TOPOGRAPHIC)



Mapped, edited, and published by the Geological Survey
Control by USGS, USCGS, USCE, and TVA
Topography from aerial photographs by photogrammetric methods
Aerial photographs taken 1956. Field check 1959
Polyconic projection. 1927 North American datum
10,000-foot grid based on Tennessee coordinate system
1000-meter Universal Transverse Mercator grid ticks,
zone 16, shown in blue
Fine red dashed lines indicate selected fence and field lines
visible on aerial photographs. This information is unchecked
Unchecked elevations are shown in brown

UTM GRID AND 1959 MAGNETIC NORTH
DECLINATION AT CENTER OF SHEET

SCALE 1:24,000
CONTOUR INTERVAL 10 FEET
DATUM IS MEAN SEA LEVEL

THIS MAP COMPLIES WITH NATIONAL MAP ACCURACY STANDARDS
FOR SALE BY U. S. GEOLOGICAL SURVEY, WASHINGTON, D. C. 20242.
AND TENNESSEE DIVISION OF GEOLOGY, NASHVILLE, TENNESSEE 37219
A FOLDER DESCRIBING TOPOGRAPHIC MAPS AND SYMBOLS IS AVAILABLE ON REQUEST

TENNESSEE
QUADRANGLE LOCATION

ROAD CLASSIFICATION
Heavy-duty Light-duty
Medium-duty Unimproved dirt
U. S. Route State Route

USGS
Historical File
Topographic Division

WHITEVILLE, TENN.
N 3515-W 8907.5/7.5

1959
AMS 3154 I SW-SERIES V841

1695