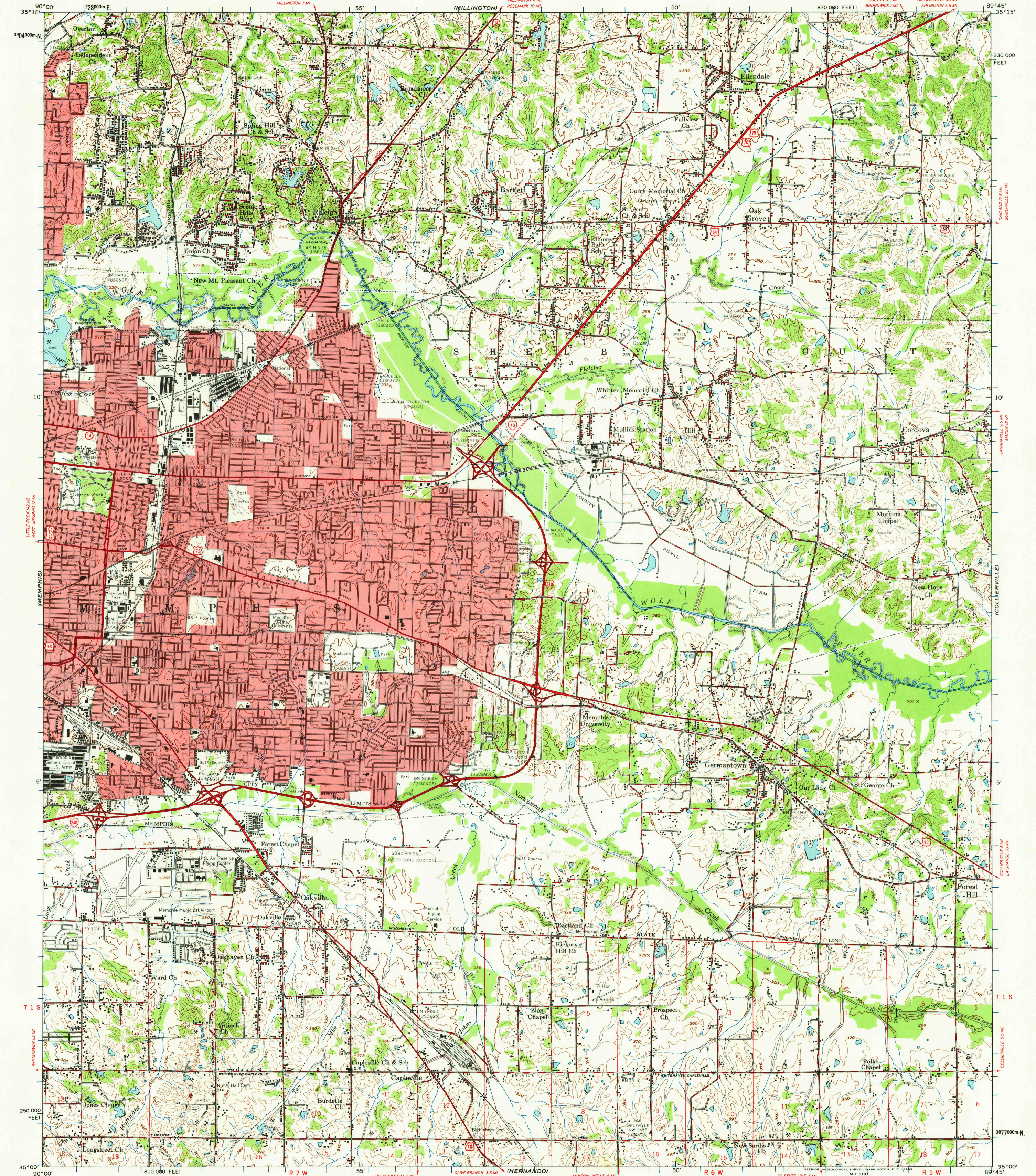


UNITED STATES
DEPARTMENT OF THE INTERIOR
GEOLOGICAL SURVEY

BARTLETT QUADRANGLE
TENNESSEE-SHELBY CO.
15 MINUTE SERIES (TOPOGRAPHIC)



Mapped and edited by the Mississippi River Commission
Published by the Geological Survey

Control by USGS, USC&GS, and USCE

Topography by photogrammetric methods from aerial photographs
taken 1958 and planetable surveys 1941-1942-1960

Polyconic projection, 1927 North American datum
10,000-foot grid based on Tennessee coordinate system
1000-meter Universal Transverse Mercator grid ticks,
zone 16, shown in blue

Red tint indicates areas in which only landmark buildings are shown

5 1/2°
TRUE NORTH
MAGNETIC NORTH
APPROXIMATE MEAN
DECLINATION, 1960

SCALE 1:62,500
CONTOUR INTERVAL 5 AND 20 FEET
DASHED LINES REPRESENT 10-FOOT CONTOURS
DATUM IS MEAN SEA LEVEL

THIS MAP COMPLIES WITH NATIONAL MAP ACCURACY STANDARDS
FOR SALE BY U.S. GEOLOGICAL SURVEY, WASHINGTON 25, D.C.,
TENNESSEE DIVISION OF GEOLOGY, NASHVILLE, TENNESSEE,
AND MISSISSIPPI RIVER COMMISSION, VICKSBURG, MISSISSIPPI
A FOLDER DESCRIBING TOPOGRAPHIC MAPS AND SYMBOLS IS AVAILABLE ON REQUEST

ROAD CLASSIFICATION
Heavy-duty — Light-duty
Medium-duty — Unimproved dirt
Interstate Route U.S. Route State Route

USGS
HISTORICAL FILE
TOPOGRAPHIC DIVISION
BARTLETT, TENN.
N3500-W8945/15
1960

JAN 26 1963

3070