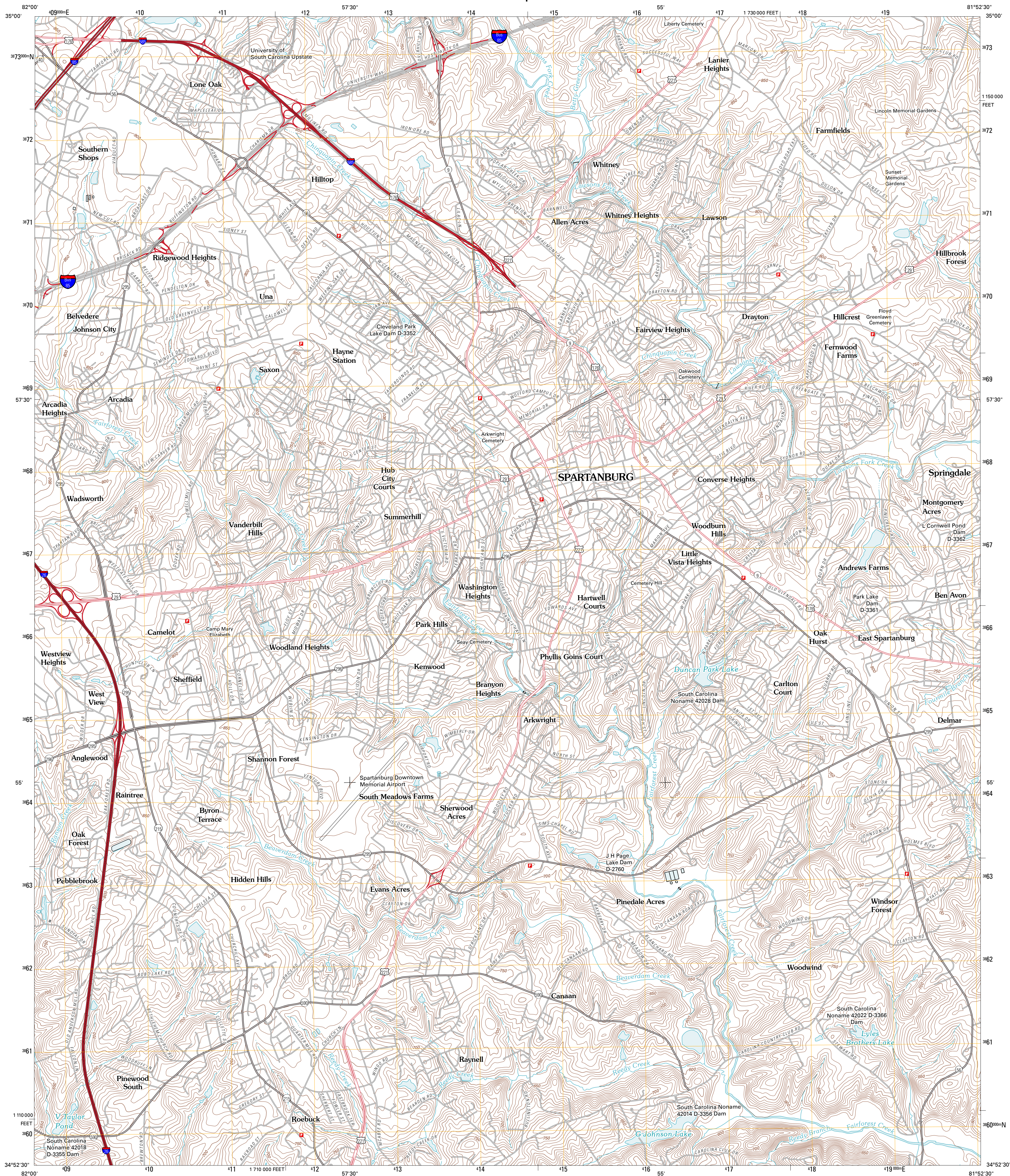




U.S. DEPARTMENT OF THE INTERIOR  
U. S. GEOLOGICAL SURVEY



SPARTANBURG QUADRANGLE  
SOUTH CAROLINA-SPARTANBURG CO.  
7.5-MINUTE SERIES

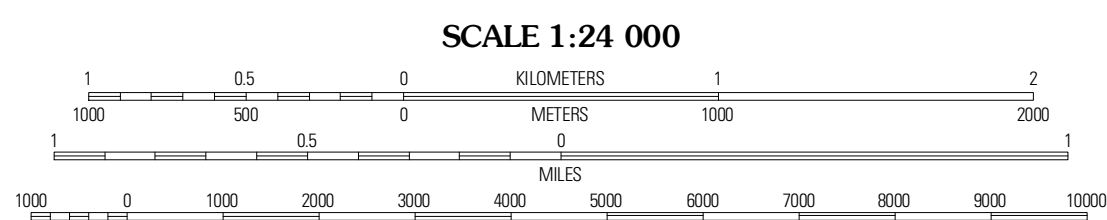


Produced by the United States Geological Survey  
North American Datum of 1983 (NAD83)  
World Geodetic System of 1984 (WGS84) Projection and  
1 000-meter grid: Universal Transverse Mercator, Zone 17S  
10 000-foot ticks: South Carolina Coordinate System of 1983

Imagery.....N.A.P. April 2009  
Roads.....2006-2010 Tele Atlas  
Names.....GNIS, 2010  
Hydrography.....National Hydrography Dataset, 2009  
Contours.....National Elevation Dataset, 2011  
Boundaries.....Census, IBWC, IBC, USGS, 1972 - 2010

UTM GRID AND 2011 MAGNETIC NORTH  
DECLINATION AT CENTER OF SHEET

U.S. National Grid
100,000-m Square ID
MU
Grid Zone Designation
17S



CONTOUR INTERVAL 10 FEET  
NORTH AMERICAN VERTICAL DATUM OF 1988  
This map was produced to conform with version 0.5.10  
of the USGS US Topo Product Standard.  
A metadata file associated with this product is draft version 0.5.16



Inman	Valley Falls	Cowpens
Wellford	Spartanburg	Pacolet
Reidsville	Moore	Glen Springs

ADJOINING 7.5 QUADRANGLES

ROAD CLASSIFICATION  
Interstate Route  
US Route  
Ramp  
State Route  
Local Road  
4WD

SPARTANBURG, SC  
2011